



morton.

Sydney 3603/91 Liverpool Street

 1  1  1

Situated in World Tower in the heart of Sydney CBD, enjoy convenience of inner-city living coupled with the comfort of first-class facilities. Proximity to Town Hall, Hyde Park, Darling harbour and the newly completed light rail combined with shopping, restaurants and cafes at your doorstep makes this the perfect option for any tenant

- Spacious bedroom with built-in, combined living & dining
- Extra space provides versatile use such as added dining or study
- Spacious bathroom with shower and bath
- Dual access 10-meter-wide balcony with open city views
- Modern gas cooking kitchen with quality stainless appliances
- Air conditioning, security access, built in laundry
- 1 security parking + additional storage

View

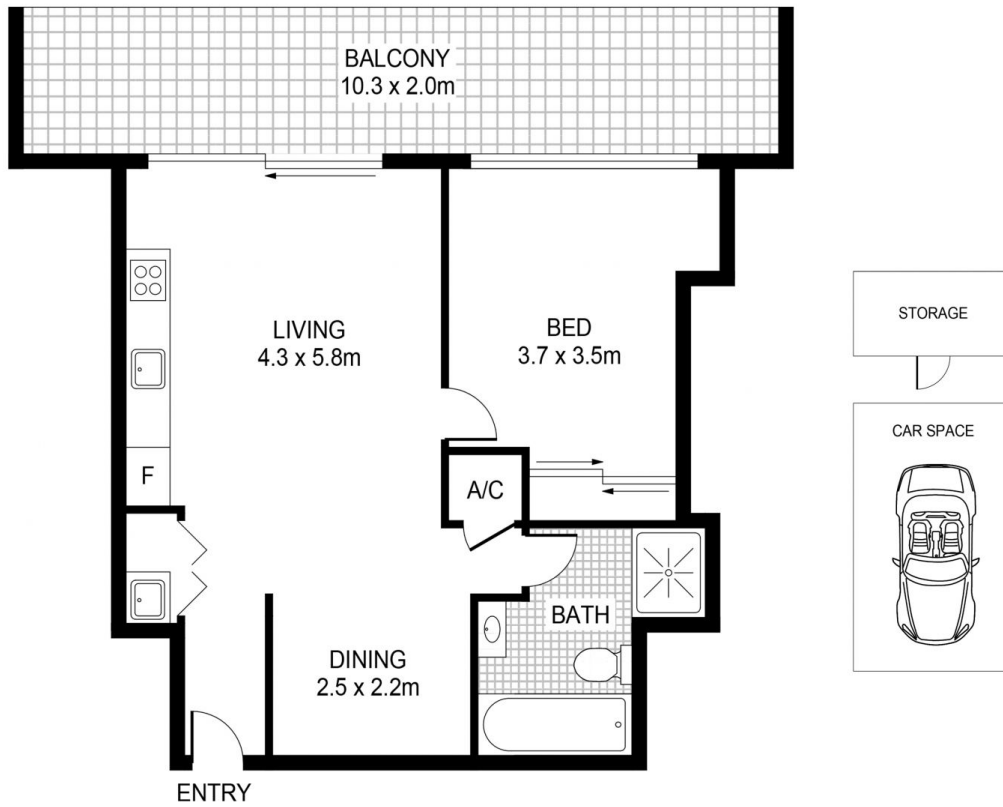
As advertised or by appointment

Agent

Morton RE

 [rentals@morton.com.au](tel:)

morton.com.au



This floor plan including furniture, fixture measurements and dimensions are approximate and for illustrative purposes only.



SYDNEY 3603/91 Liverpool Street

morton.