



# morton.

**Sydney** 1302/281 Elizabeth Street

🛏 2 🚿 2 🚗 1

Located in the sought after 'Regency Hyde Park' with breathtaking views over Hyde Park and Sydney Harbour glimpses.

- Unfurnished, with near New Carpet
- Spacious, combined living/dining area leads out onto one of two balconies overlooking Hyde Park
- Two spacious bedrooms, both with views over Hyde Park, main with second connecting park side balcony and ensuite bathroom with bath
- Modern granite kitchen with stainless steel gas appliances
- Built in wardrobes in both bedrooms
- Air conditioning, internal laundry
- One secure car space
- Security access and concierge
- Resort style facilities include indoor heated pool, spa, sauna and fully equipped gym

## View

As advertised or by appointment

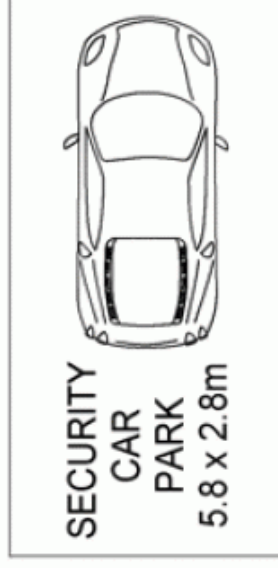
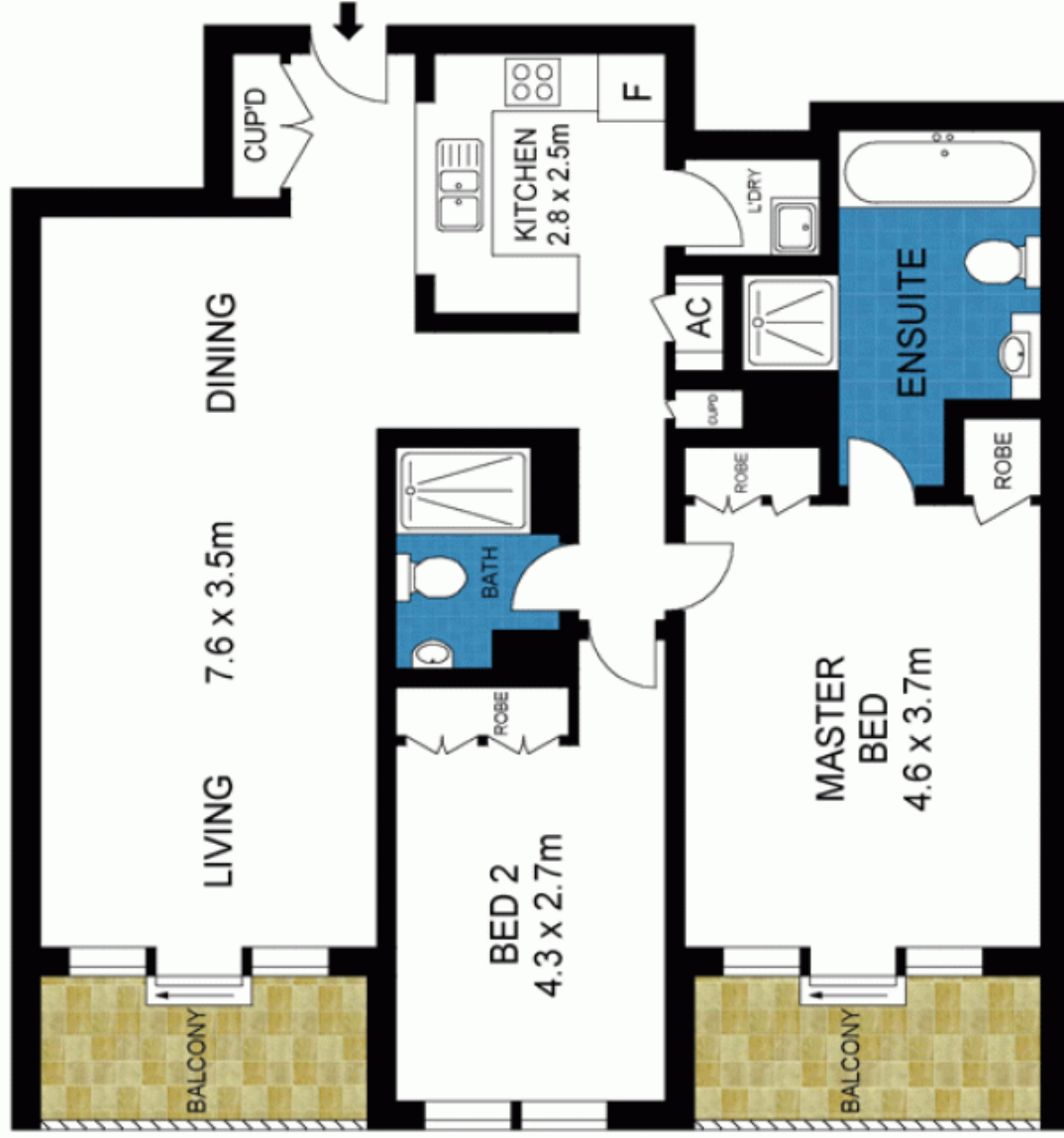
## Agent

**Naomie Texier**

📞 0439 247 710

✉ naomie.texier@morton.com.au

**morton.com.au**



INT : 94m<sup>2</sup>  
EXT : 26m<sup>2</sup>



1302/281 Elizabeth Street, Sydney