



**morton.**

**Wentworth Point** 84/27 Bennelong Parkway

 2  1  1

Privately situated in the highly prized Mariners Cove, this bright and open apartment benefits from an abundance of natural light while offering breathtaking district views of Sydney Olympic Park and surrounds.



- Lounge room with great aspects and air conditioning
- Large balcony perfect for an afternoon retreat
- Updated kitchen with stainless steel appliances
- 2 full size bedrooms both with built in wardrobes
- Renovated oversize bathroom with tub
- Resort style facilities including gym, steam room and man-made beach

#### View



As advertised or by appointment

#### Agents

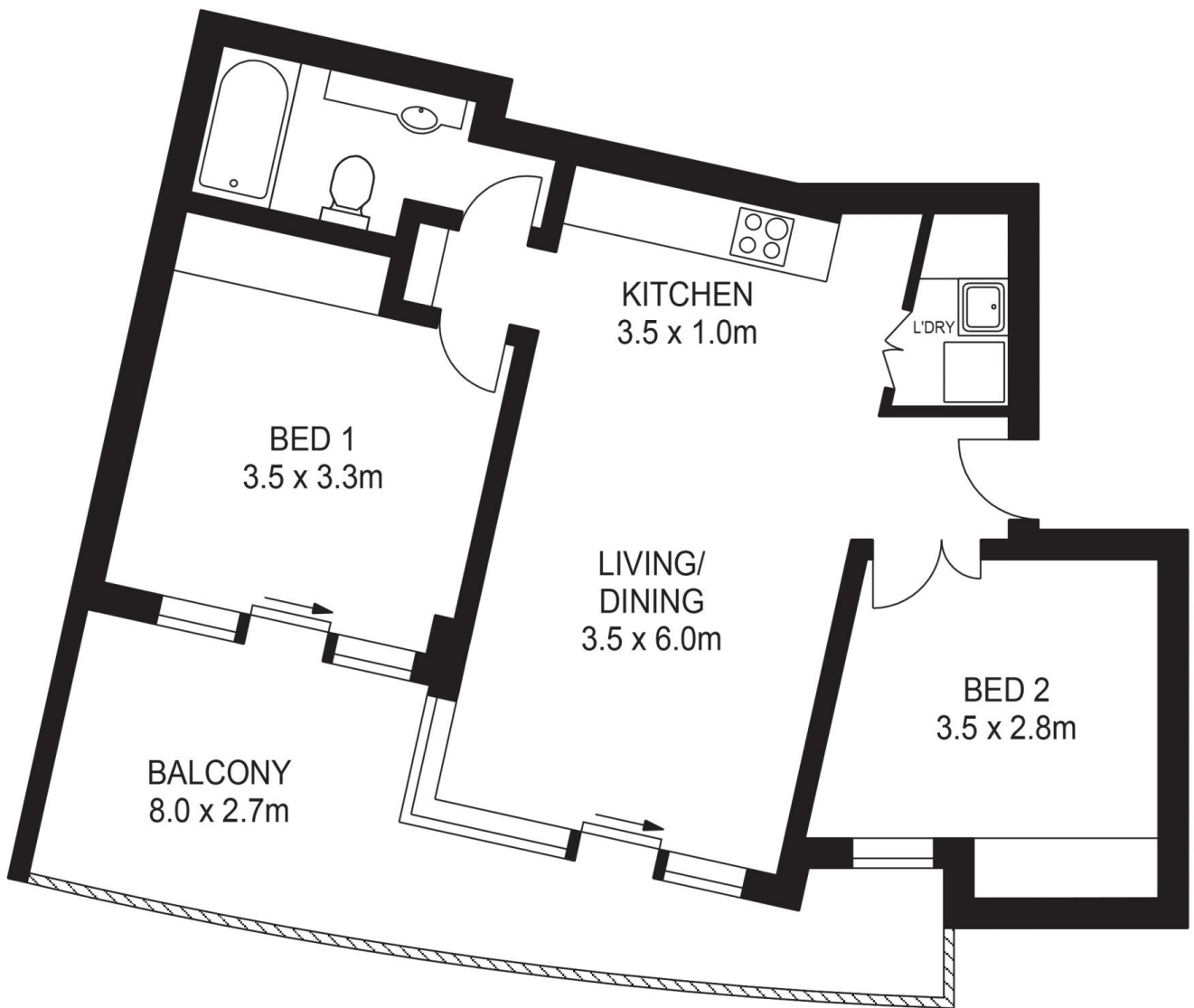
##### Sarah Fowell

 0437 492 129  
 rentals@morton.com.au

##### Dylan Choe

 0416 932 977  
 dylanchoe@morton.com.au

[morton.com.au](http://morton.com.au)



APPROX. INT. AREA : 58m<sup>2</sup>

APPROX. EXT.AREA : 16m<sup>2</sup>

## 84/27 BENNELONG PARKWAY WENT, WORTH POINT



[www.assetphotographers.com.au](http://www.assetphotographers.com.au)

Please note these measurements are approximate only. The plans are intended as a rough guide for illustrative purposes. It is not warranted or guaranteed to be correct nor is it a part of the sale or rental contract.

