



# morton.

**Pyrmont** 206/8-14 Wharf Crescent

 3  2  2

Proudly set in a prestigious harbourside position within the ultra exclusive 'Saunders Wharf' community, this is a residence of unrivalled refinement, quality and sophistication. Dominated by iconic views across the harbour to the soaring city skyline and Harbour Bridge, this is a property of the highest standard.

- Expansive entertaining with separate lounge and dining
- Generous master, ensuite with bathtub and built-ins
- Sleek stone kitchen, gas appliances, soft-touch cabinetry
- Sleek designer bathrooms, frameless glass shower
- Secure double garage complete with adjoining storage area
- Automated and sliding exterior privacy screens
- Ducted air conditioning, video intercom
- Ultra exclusive harbour front cul-de-sac location

Beautifully appointed with an exacting attention to detail and a finesse that is often sought-after yet rarely achieved, this exceptional home is waterfront living without compromise. Cafes, shops, the light rail and dining are only footsteps from


[morton.com.au](http://morton.com.au)

### View



As advertised or by appointment

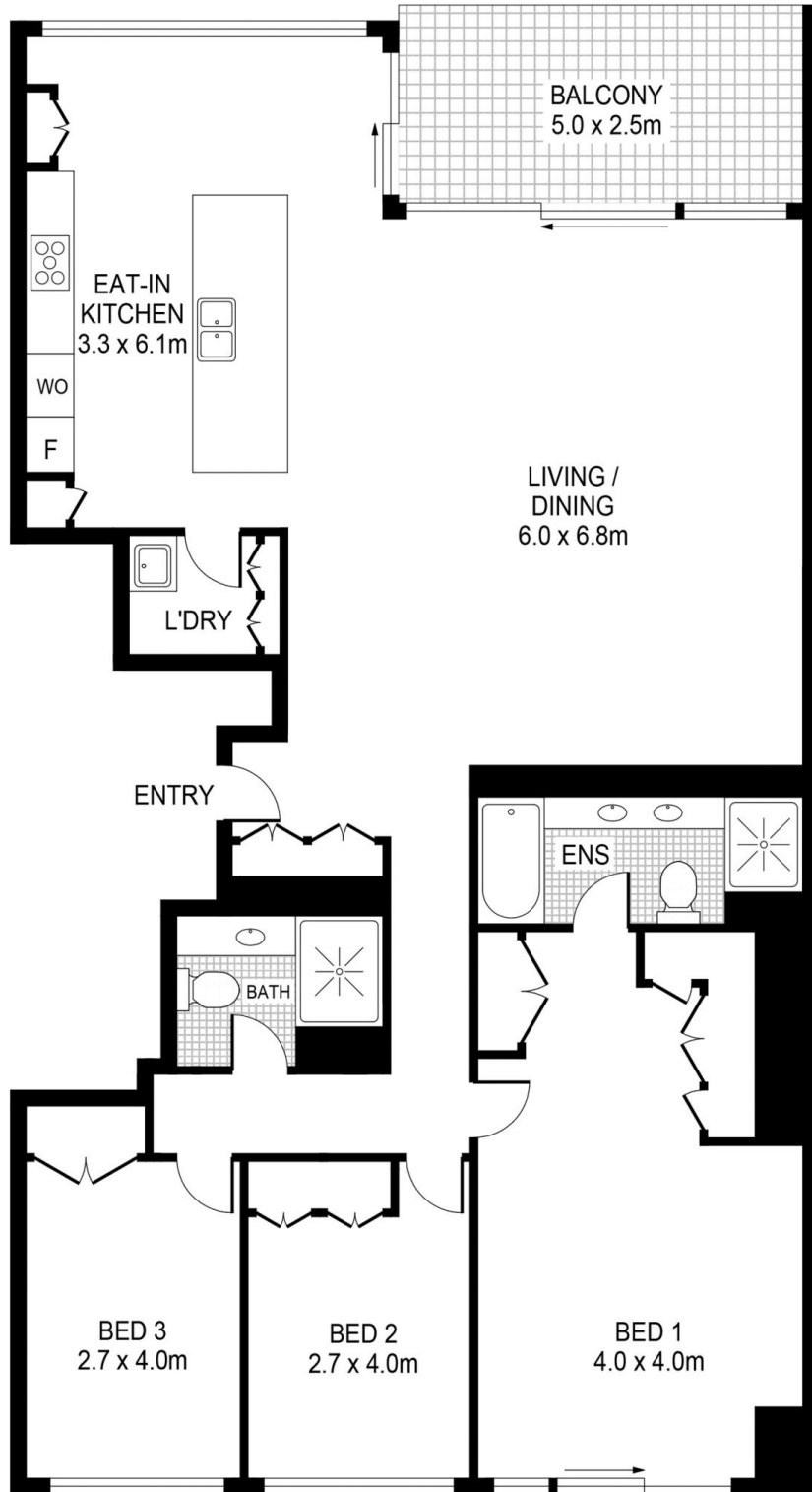
### Agents

#### James Crow

 0410 593 057  
 james@morton.com.au

#### Sarah Li

 0439 528 933  
 sarahli@morton.com.au



STORAGE CAGE  
4 m<sup>2</sup>

