



morton.

Pyrmont 7E/5 Tambua Street



Set within the premier 'Stonecutters' security complex, this generously proportioned one-bedroom residence rises to every occasion with its oversized layout, sleek modern finishes and elevated cityscape views. It provides a home of excellent style and privacy and offers residents exclusive access to Jackson's Landing's host of first-class resort amenities.

- Generous layout with 84sqm in/outdoor living space
- An open design with light filled lounge and dining areas
- Double bedroom with balcony plus separate study nook
- BBQ terrace with views over parkland to the city and stretching beyond
- Quality modern kitchen with sleek appliances and island bench
- Air-conditioning, security car space plus lock-up storage
- Exclusive access to swimming pools, gyms and tennis courts

View

As advertised or by appointment

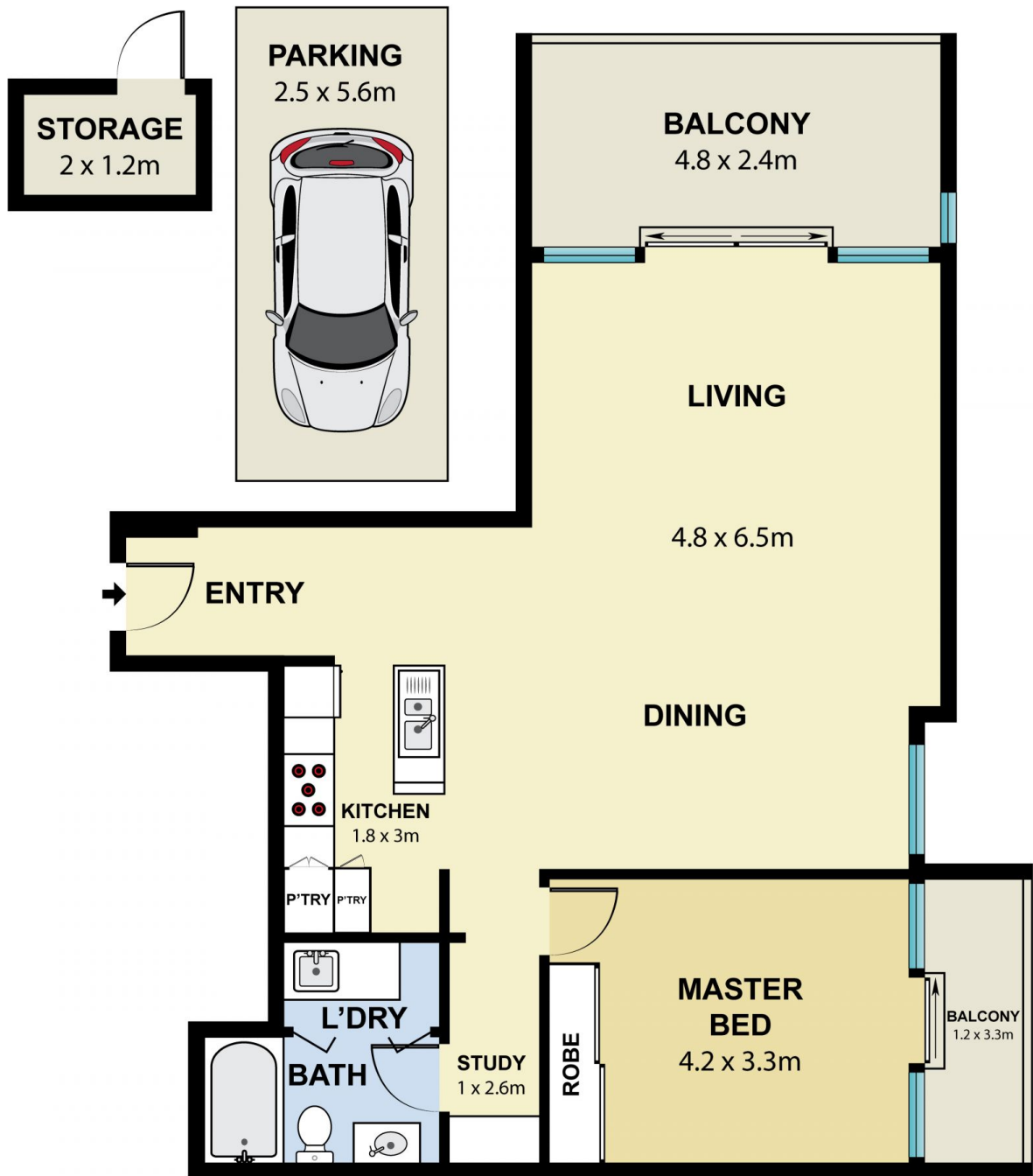
Agent

Nicole Beckett

📞 0409 896 152

✉️ nicole@morton.com.au

morton.com.au



Level Seven



SCALE (METRES)



7E/5 Tambua Street, Pyrmont

Scale in metres. Indicative only. Dimensions are approximate. All information contained here in is gathered from sources we believe to be reliable. However we cannot guarantee its accuracy and interested persons should rely on their own enquiries.