



1/25 Pirrama Road Pyrmont, NSW

 3

 2

 1

A relaxed garden sanctuary

Light, size and leafy privacy are all showcased in this impressive garden residence where bespoke finishes, generous spaces and elevation combine to create a discerning lifestyle apartment. Quietly positioned in the boutique MacArthur complex of only seven luxury homes, it offers large house-like proportions with a flowing indoor-outdoor design embraced by a tranquil, easy-care courtyard.

- Spacious and bright open design that flows to the outside
- Elevated north east aspect that captures views to the city
- Wraparound courtyard garden and entertainment space
- Three double bedrooms all have direct access to the courtyard
- Custom cabinetry, built-ins, designer lighting, picture rails
- Modern kitchen with quality fittings and breakfast bar seating

With unsurpassed build quality fused with industrial inspired features, this bespoke resid

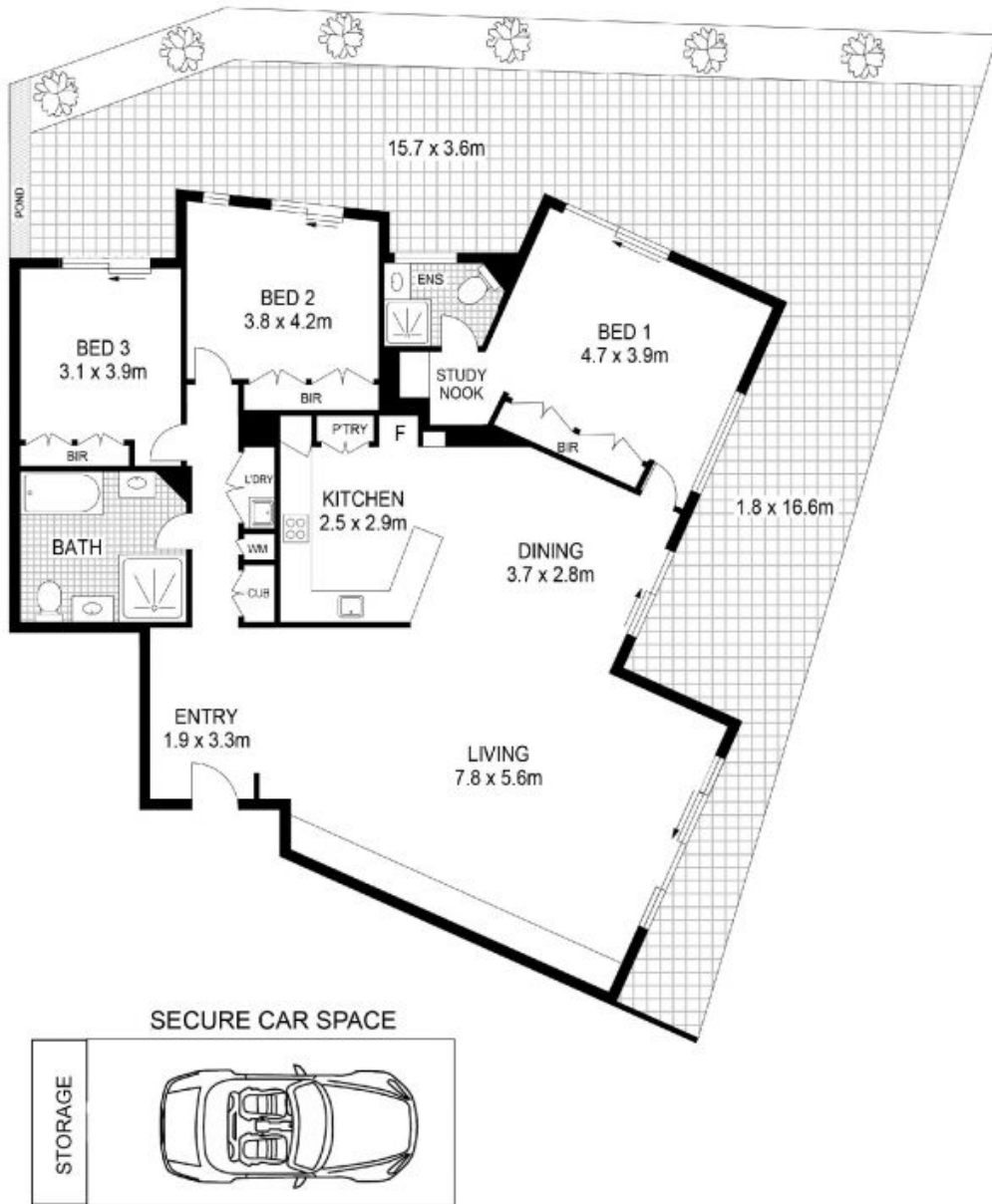
Council Rates: \$338.00 p/q
Water Rates: \$177.00 p/q
Strata Rates: \$1,900.00 p/q

James Crow
 0410 593 057

Maddison McAuliffe
 0438 544 328

8/27/2020

159848109972610959.jpg (2480x3508)



1/25 Pirrama Road

Pyrmont, NSW

morton.

PLANS SHOWN ONLY FOR REFERENCE. ALL DIMENSIONS ARE APPROXIMATE.



PYRMONT 1/25 Pirrama Rd

morton.