



morton.

Wentworth Point 409/7 Stromboli Strait

 2  2  1

Located in St Tropez at The Waterfront, this is your opportunity to move into this abundantly lit two bedroom apartment just moments from The Promenade, The Piazza, and Wentworth Point transport links, retails precincts and the exclusive Pulse Club, and only minutes to Sydney Olympic Park main venues, train station, Bicentennial Park and Millennium Parklands.

Features:

- Luxury waterfront apartment located on level four
- Combined open living and dining
- Full size kitchen with designer modern stainless steel appliances
- Gas cooking and quality finishes throughout
- Generously size bedrooms with built-in wardrobes
- Main bedroom with en-suite
- Laundry room and clothes dryer
- Ducted air conditioning
- Single car space and storage cage.


View

As advertised or by appointment

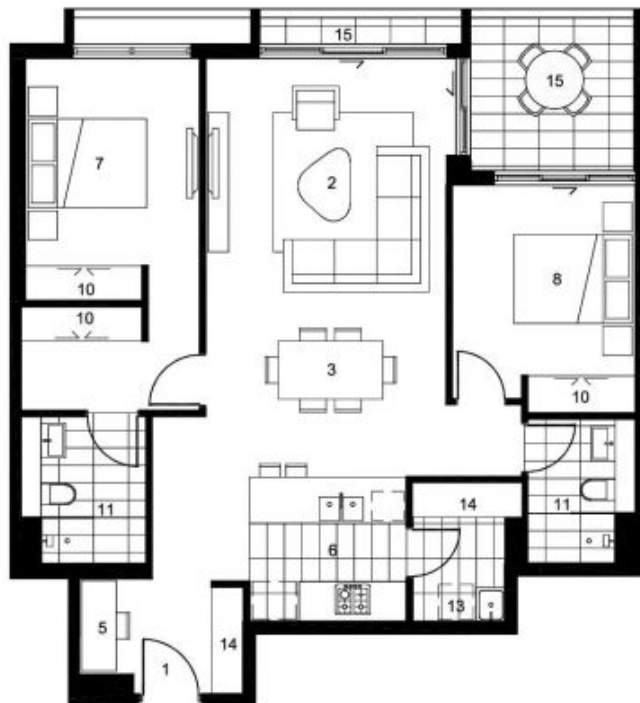
Agent

Dylan Choe

 0416 932 977

 dylanchoe@morton.com.au

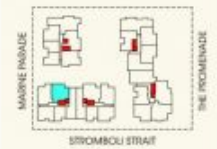
morton.com.au



ST TROPEZ THE WATERFRONT

APARTMENT 2409 LEVEL 4 2 BED / 2 BATH

Internal Area 94 sqm
External Area 19 sqm
Total Area 103 sqm



KEY

- 01 Entry
- 02 Living
- 03 Dining
- 04 Study
- 05 Master
- 06 Kitchen
- 07 Bedroom 1
- 08 Bedroom 2
- 09 Bedroom 3
- 10 Wardrobe
- 11 Bathroom
- 12 Powder Room
- 13 Laundry
- 14 Store
- 15 Balcony / Courtyard

Disclaimer: The particulars are set out as a general outline for the guidance of intending purchasers and do not constitute an offer or contract. All descriptions, dimensions, references to conditions and measures permitting for use and other details are given in good faith and are believed to be correct, but any intending purchasers should not rely on them as statements or representations of fact, but must satisfy themselves by inspection or otherwise as to the correctness of such facts, and where necessary seek advice. The third party supplier or their agents have any authority to make or give any representation or warranty in relation to this property. *Attention please: images larger for courtyard apartments. Refer to the attached pool schedule.

