



# morton.

**ROSEVILLE** 21 Malvern Avenue

 4  3  2

Preserving the ambience of its 1920s heritage, this impressive bungalow has been updated and expanded for today's lifestyle. Displaying two levels of substantial living, contemporary comforts and exquisite manicured gardens, this superbly presented property is ideal for the modern family, in particular families with older children.

- Roseville Public and Killara High school catchment area
- North facing wide covered verandah
- Formal lounge with fireplace, private dining
- Spacious family living, Brush Box floors
- Stylish granite kitchen, quality appliances
- Paved entertaining, Wisteria clad arbour
- Four large beds on two levels, main with ensuite
- Loft style ceilings, skylights, wine cellar, air-conditioning
- Laundry, shed with sink, fans, gas heating
- Ideally located near to buses and shops

### View

As advertised or by appointment

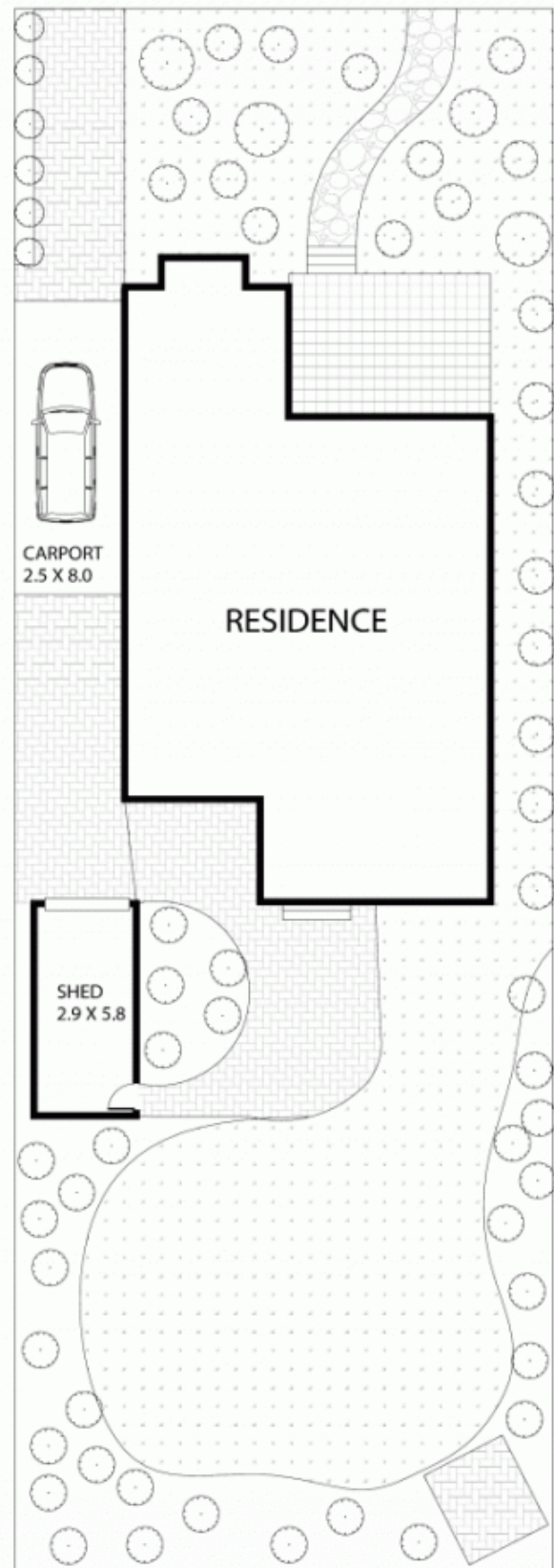
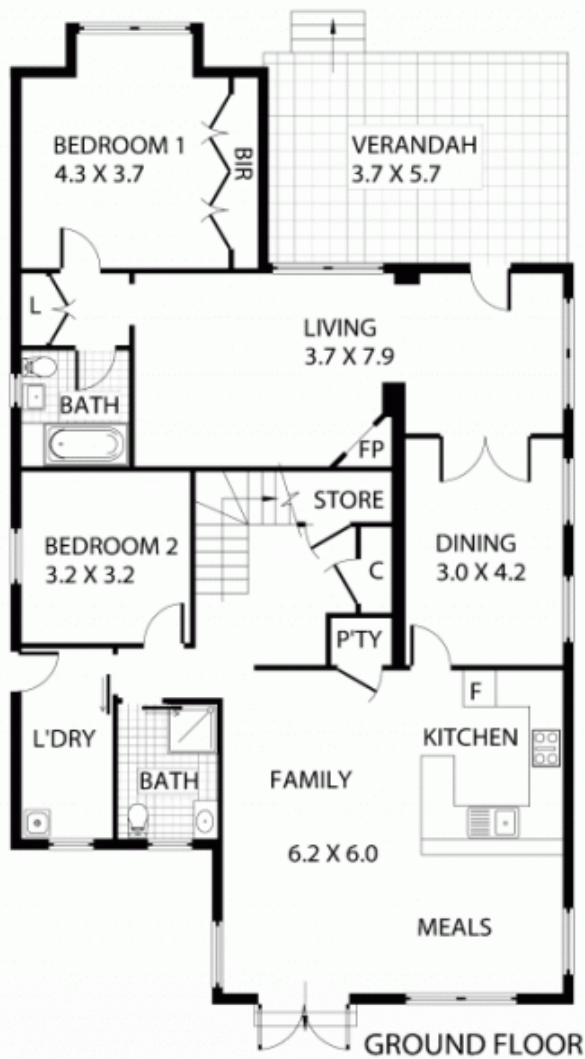
### Agent

**Sarah Fowell**

 0437 492 129

 sarah@morton.com.au

[morton.com.au](http://morton.com.au)



0 1 2 3 4 5



Plans shown are for presentation purposes only and are not part of any legal document or title. They are subject to errors, omissions, inaccuracies and should not be used as a sole and accurate reference. Interested parties should make their own inquiries using independent sources.

21 MALVERN AVENUE

ROSEVILLE