



# morton.

**ARTARMON** 10/1 Milner Road

 2  1  1

A great opportunity to secure this bright and spacious townhouse, offering indoor/outdoor living conveniently located across from Thomson Park. This private and tranquil property, close to Artarmon Village, will appeal to all buyers.

- Generous sized living area with wooden floating floors
- Large outdoor courtyard perfect for the entertainer
- Two spacious bedrooms with built-in wardrobes
- Well appointed kitchen
- Full main bathroom plus lower level guest toilet
- Separate large laundry, lock-up garage
- Pet friendly complex

### View

As advertised or by appointment

### Agent

**Sarah Fowell**

 0437 492 129

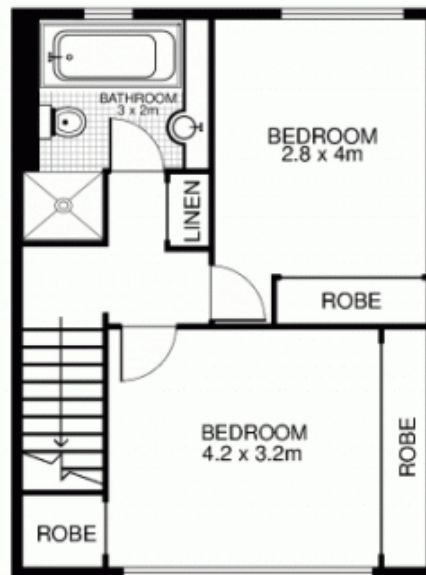
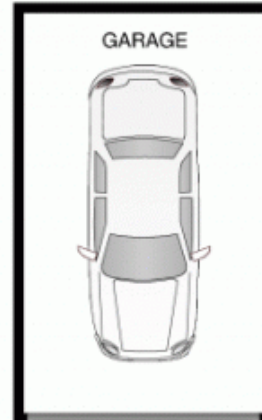
 sarah@morton.com.au

[morton.com.au](http://morton.com.au)

# 10/1 Milner Road, ARTARMON



GROUND FLOOR



FIRST FLOOR



This floor plan is intended as a guide only. Layout dimension are approximate only. No representation or warranties of any nature whatsoever are given or intended. Any person using this information should rely on their own enquiries.