



morton.

NEWTOWN 27/37 Iredale Street

1 1 1

A quiet street location in the heart of Newtown is the unbeatable lifestyle setting for this light filled one-bedroom apartment where just footsteps from your door you can grab a coffee, chat in a wine bar or jump on a train to the CBD. Featuring bright interiors and good proportions, it promises an excellent prospect for first home, investment or low maintenance lifestyle seekers.

- First floor positioning within a security complex
- Wide terrace accessed from living and bedroom
- North east aspect and good natural light throughout
- Secure basement parking space and lift access
- Currently tenanted and earning \$430 pw income

View

As advertised or by appointment

Agent

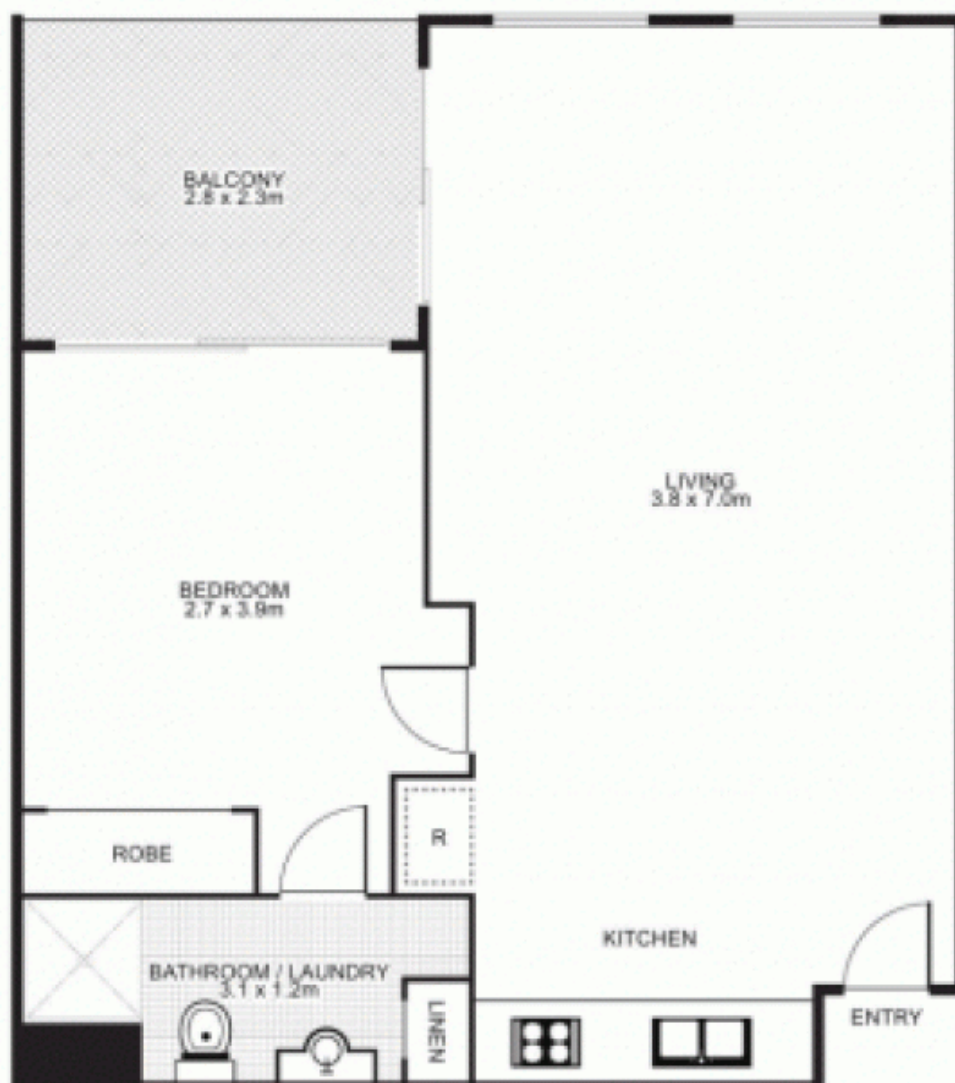
Sarah Fowell

0437 492 129

sarah@morton.com.au

morton.com.au

**27/37 Iredale Street,
NEWTOWN**



This floor plan is intended as a guide only. Layout dimensions are approximate only. No representation or warranty of any nature whatsoever is given or intended. Any person using this information should rely on their own enquiries.