



# morton.

**DARLING ISLAND** 215/3 Darling Island Road

🛏 4 🍽 3 🚗 2

A truly rare opportunity to acquire a house like apartment over two levels literally on the waters edge and within a short walk to the city centre. Over 270 square metres comprising 4 bedrooms + a study and upper and lower level living areas. Prized waterfront cul-de-sac location surrounded by parkland and historic Sydney Harbour finger wharves.

- Linear design with dual aspect across both levels
- Open plan living with soaring ceilings overlooking the water
- Step through concertina doors to generous outdoor entertaining
- Polished timber floors
- Master chef's light-filled kitchen with Miele appliances
- King sized bedrooms all with built-ins (2 with ensuites)
- Marble bathrooms throughout (2 with bathtubs)
- Formal/informal living areas on separate levels w/dual access
- Ideally suits teenagers retreat, guests or home/office
- Additional balcony with timber decking off bedrooms
- Dual zone reverse cycle air conditioning

### View

As advertised or by appointment

### Agent

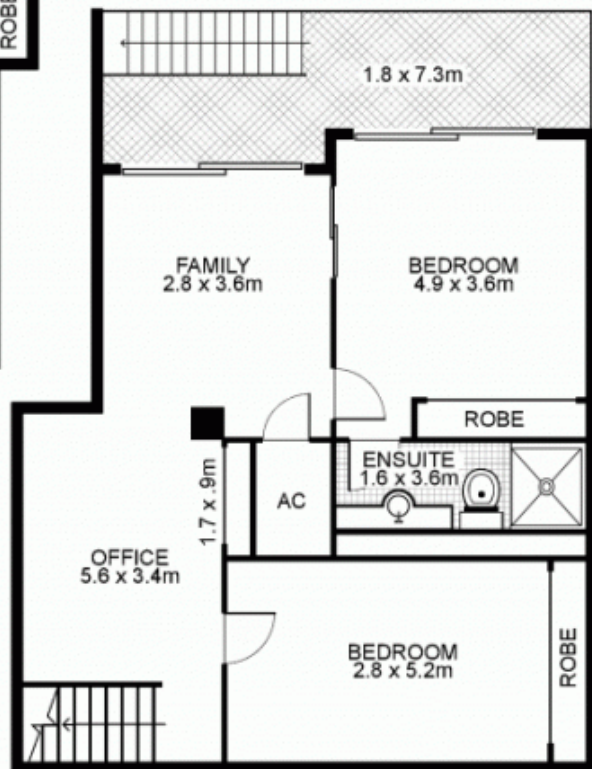
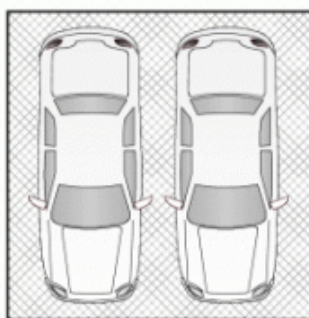
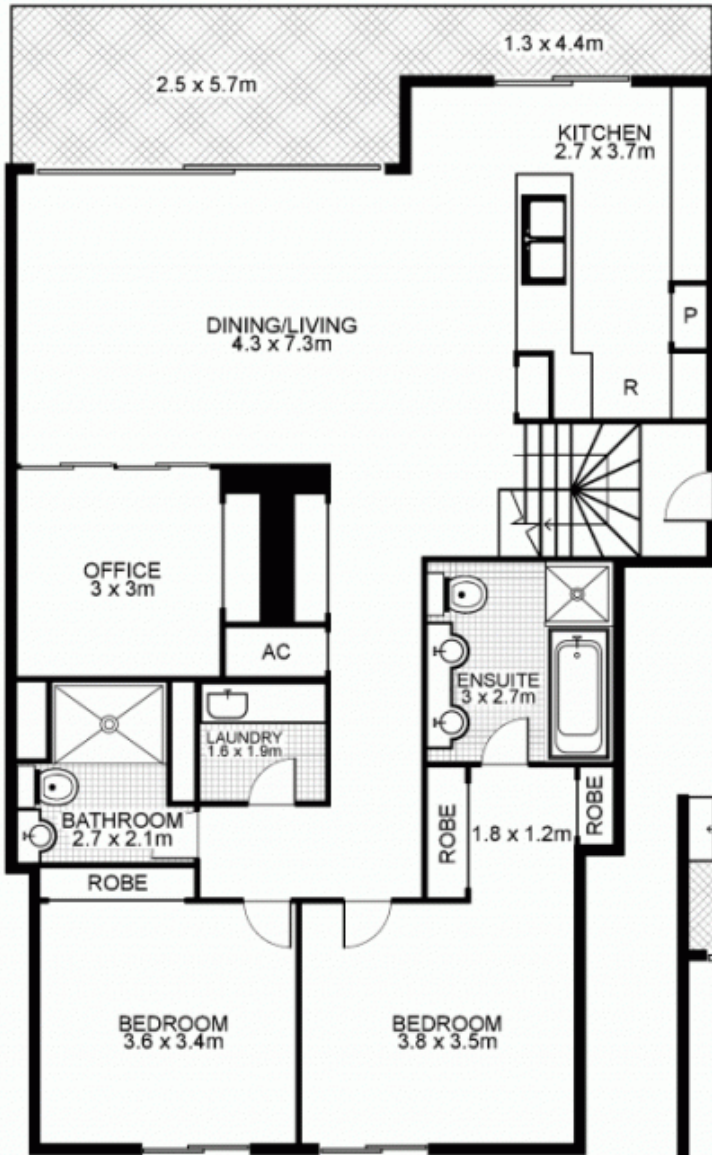
**James Crow**

📞 0410 593 057

✉ james@morton.com.au

[morton.com.au](http://morton.com.au)

# 215/3 Darling Island Road, PYRMONT



Plans by  
**surroundpix**  
com.au  
 1300 30 32 40

This floor plan is intended as a guide only. Layout dimensions are approximate only. No representation or warranties of any nature whatsoever are given or intended. Any person using this information should rely on their own enquiries.