



morton.

PYRMONT 259/3 Darling Island Road

3 2 2

Located on Darling Island's exclusive harbourside peninsula, this open plan three bedroom apartment will suit those seeking space, privacy and exceptional standards. Positioned right on the water's edge and spanning across the entire floor, this apartment enjoys expansive views of Sydney Harbour, the Bridge and city.

- Large open plan lounge and dining with soaring pitched ceilings
- Opens to large balcony ideally suited to indoor/outdoor living
- Enormous roof top terrace with 360 degree harbour views
- Integrated kitchen with sun drenched breakfast area
- Exquisite Brazilian bamboo marble and Miele stainless appliances
- Master bedroom with walk-through wardrobe and superb ensuite
- Equally spacious second bedroom with built-in wardrobes
- Third bedroom or ideal home/office with built-in wardrobes
- Dual-zone air conditioning, remote exterior sun screens
- Building security with direct lift access, secure side by side

morton.com.au

View

As advertised or by appointment

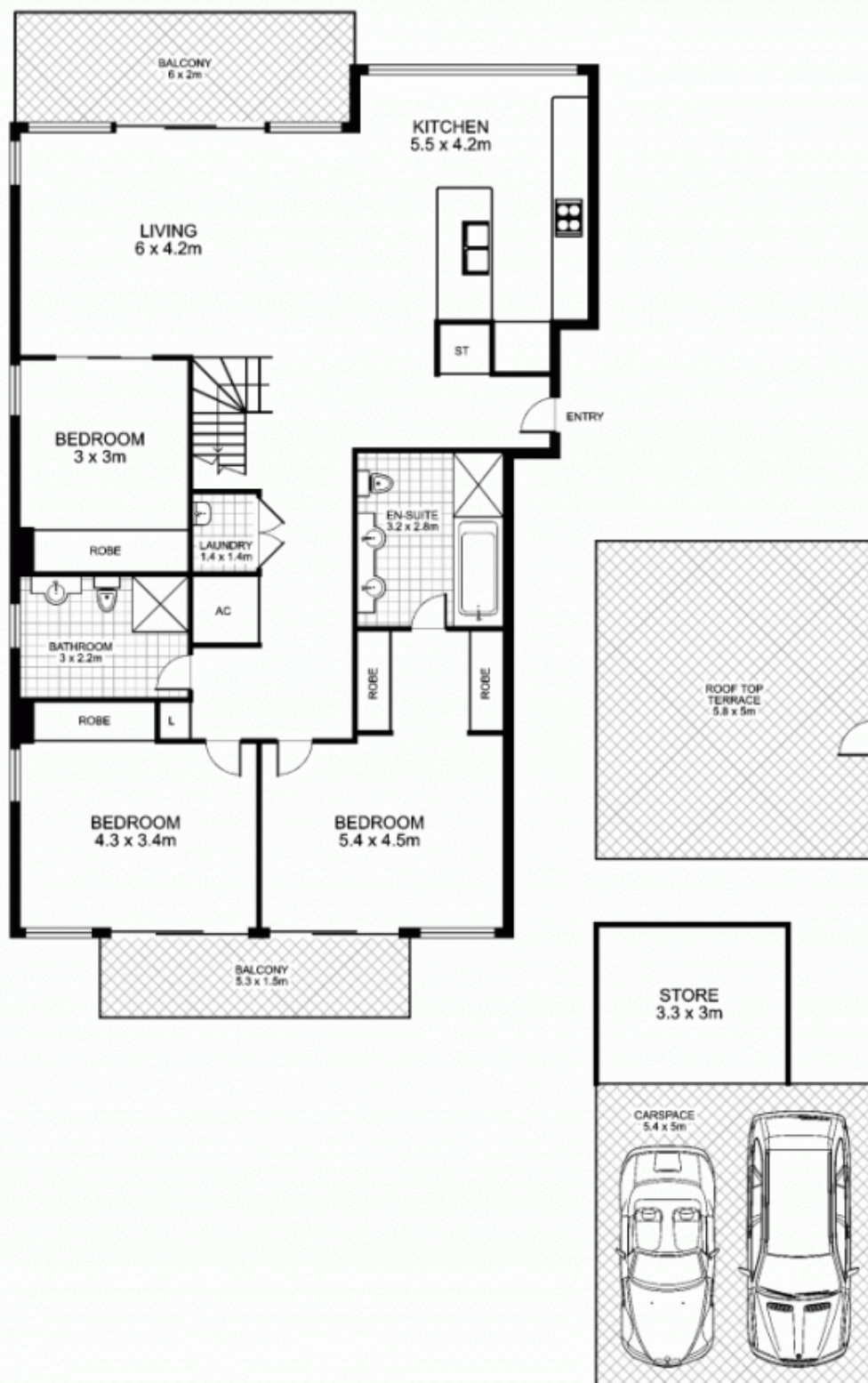
Agent

James Crow

0410 593 057

james@morton.com.au

259/3 Darling Island Road, PYRMONT



This floor plan is intended as a guide only. Layout dimensions are approximate only. No representations or warranties of any nature whatsoever are given or intended. Any person using this information should rely on their own enquiries