



# morton.

**PYRMONT** 36/2-14 Bunn Street

 3  3  3

Located within a short stroll across the Darling Harbour footbridge to the city, this private, sun-drenched, north facing penthouse in a boutique block offers a fantastic city lifestyle without compromising on space. This uniquely designed property has a superb layout with over 220 square metres across three levels each with expansive outdoor entertaining areas.

- Large light filled formal lounge and dining areas
- Opens to an enormous north facing outdoor terrace
- Designer gas kitchen with breakfast bar
- Stainless steel appliances and splash back with stone benches
- Brand new timber floors, fresh paint and carpet
- King sized bedrooms all with built-ins and access to balconies
- Three marble bathrooms, two with bathtubs
- Rooftop terrace with harbour/city back drop
- Air-conditioning, ample storage
- Secure building entry, lift access and gym

[morton.com.au](http://morton.com.au)

### View

As advertised or by appointment

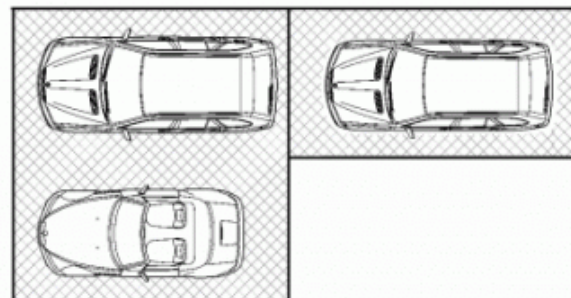
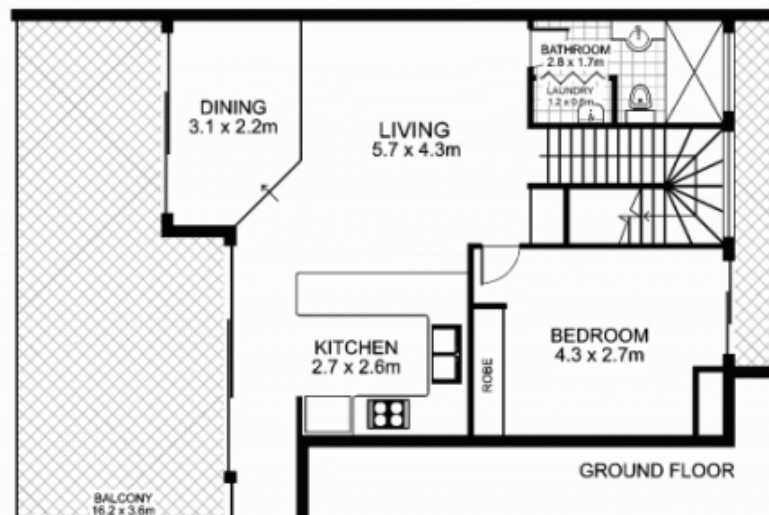
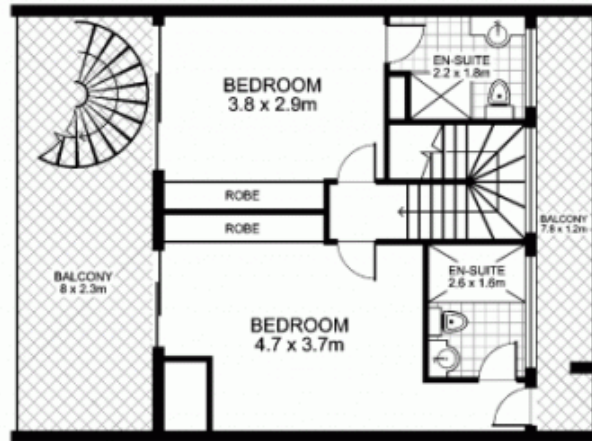
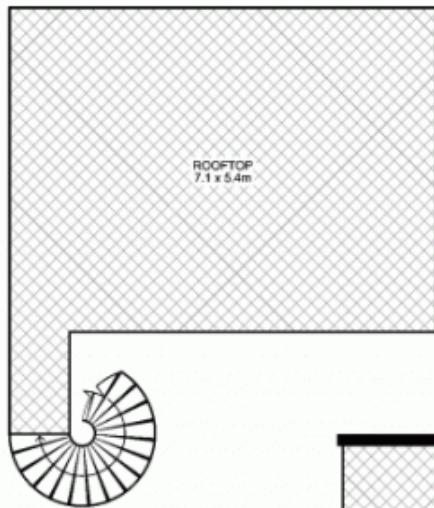
### Agent

**James Crow**

 0410 593 057

 [james@morton.com.au](mailto:james@morton.com.au)

# 36/2-14 Bunn Street, PYRMONT



This floor plan is intended as a guide only. Layout dimensions are approximate only. No representations or warranties of any nature whatsoever are given or intended. Any person using this information should rely on their own enquiries



Plans by  
**surroundpix**  
.com.au  
 1300 30 32 40