



morton.

PYRMONT 215/3 Darling Island Road

 4  3  2

A truly rare opportunity to acquire a house like apartment over two levels literally on the water's edge and within a short walk to the city centre. Over 270 square metres comprising four bedrooms plus study, upper and lower level living areas. Prized waterfront cul-de-sac location surrounded by parkland and historic Sydney Harbour finger wharves.

- Linear design with dual aspect across both levels
- Open plan living with soaring ceilings overlooking the water
- Step through concertina doors to generous outdoor entertaining
- Polished timber floors, dual zone air-conditioning
- Master chef's light-filled kitchen with Miele appliances
- King sized bedrooms all with built-ins, two with ensuites
- Marble bathrooms throughout, two with bathtubs
- Formal/informal living areas on separate levels with dual access
- Ideally suits teenagers retreat, guests or home/office
- Additional balcony with timber decking off bedrooms
- C-bus programmable lighting throughout

morton.com.au

View

As advertised or by appointment

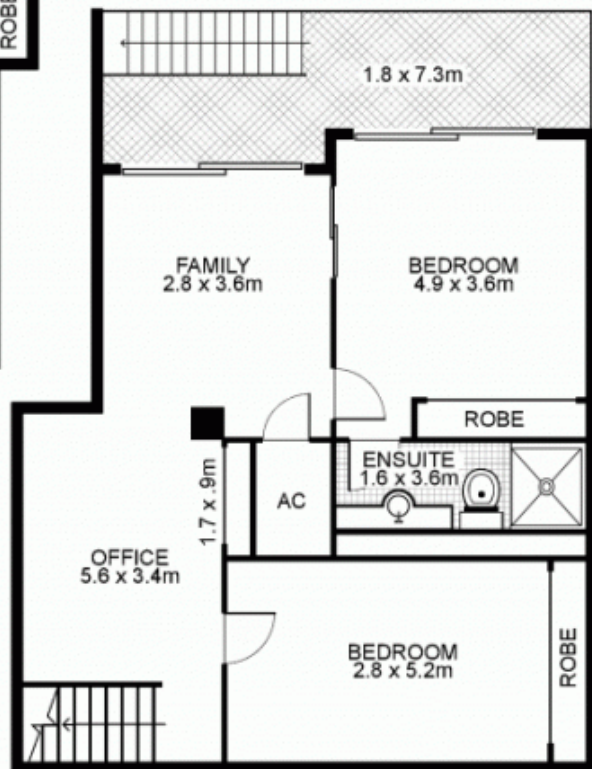
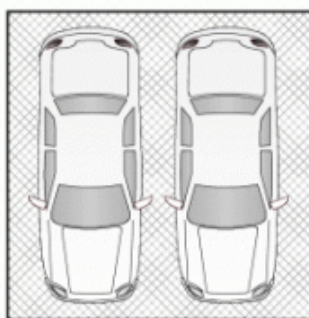
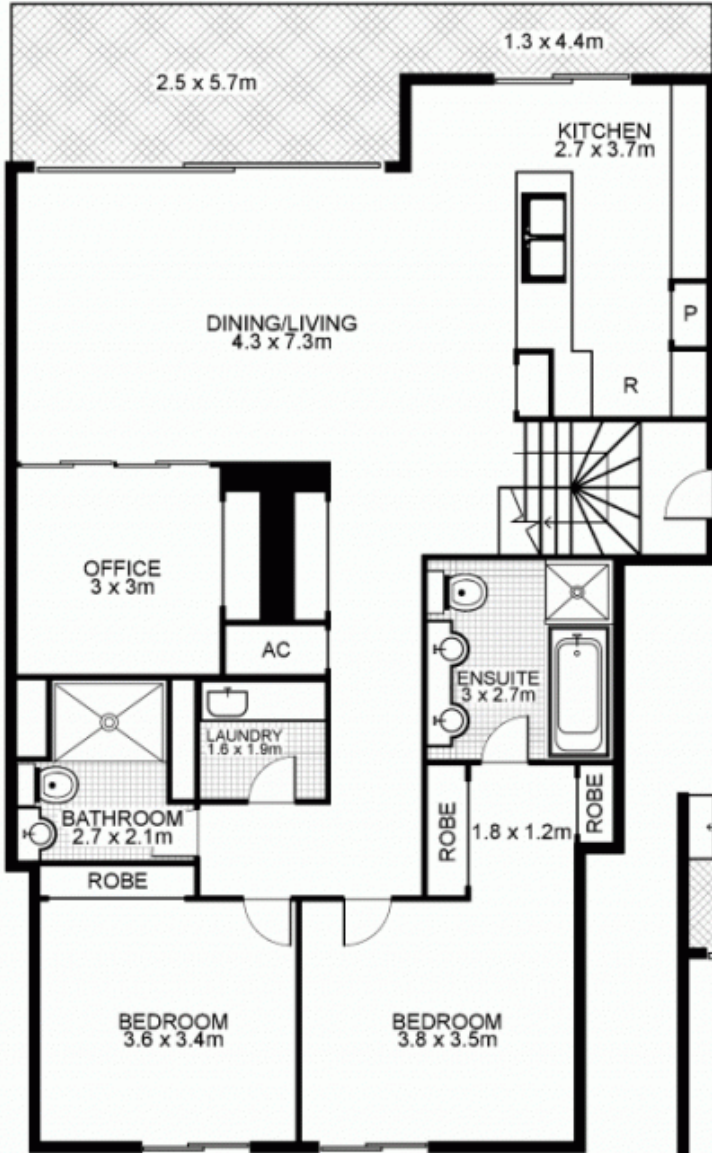
Agent

James Crow

 0410 593 057

 james@morton.com.au

215/3 Darling Island Road, PYRMONT



Plans by
surroundpix
com.au
 1300 30 32 40

This floor plan is intended as a guide only. Layout dimensions are approximate only. No representation or warranties of any nature whatsoever are given or intended. Any person using this information should rely on their own enquiries.