



morton.

MARRICKVILLE 101/11-23 Gordon Street

 2  2  1

Located within a short stroll to city transport and shops, this near new two bedroom apartment offers a unique floor plan with an abundance of space. Being a warehouse conversion, character has been retained whilst providing contemporary living.

- Open plan living, high ceilings
- Exposed beams and polished timber floors
- Large outdoor north facing timber deck surrounded by gardens
- Master bedroom with high ceilings and walk-through wardrobes
- Equally spacious second bedroom with built-in wardrobes
- Sleek galley style gas kitchen, stone benchtops, splash back
- Stainless steel appliances including dishwasher
- Air-conditioning, security intercom and elevator access
- Under cover secure parking
- Common facilities include outdoor pool, sundeck and gym
- Located on a quiet leafy street

View

As advertised or by appointment

Agent

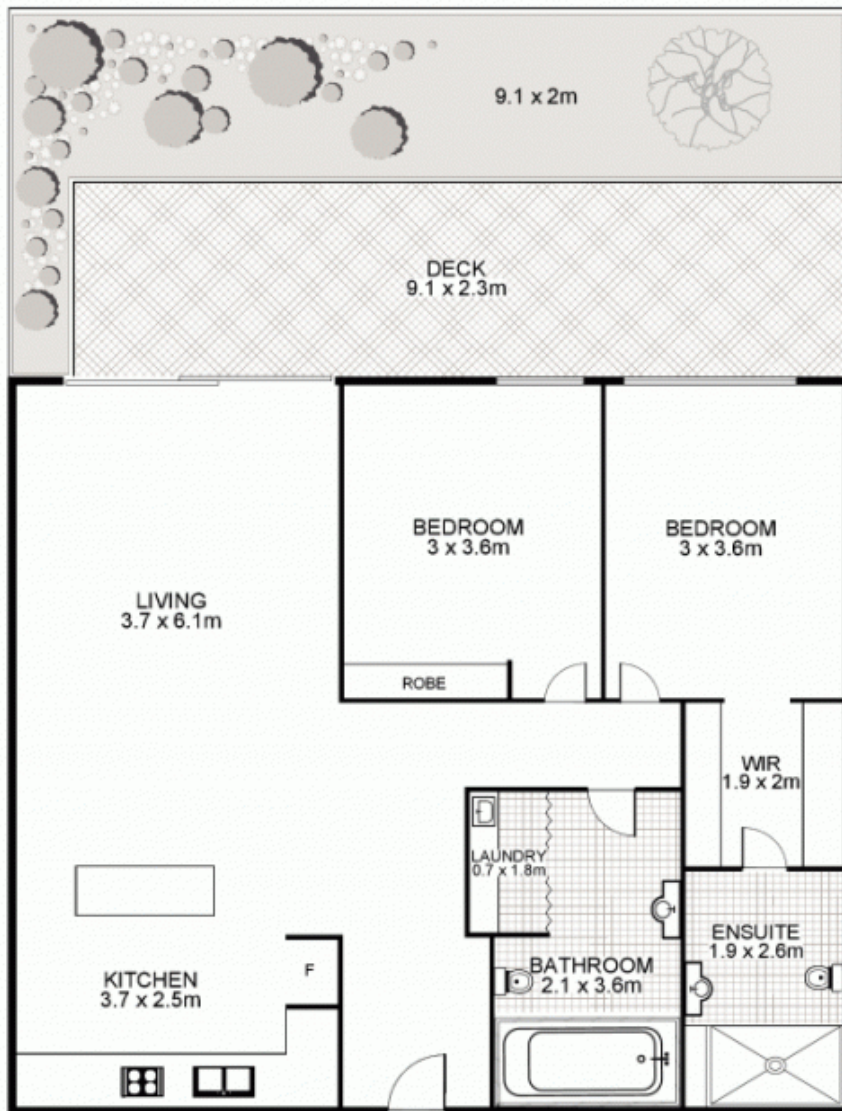
Sarah Fowell

 0437 492 129

 sarah@morton.com.au

morton.com.au

101/11-23 Gordon Street, MARRICKVILLE



This floor plan is intended as a guide only. Layout dimensions are approximate only. No representations or warranties of any nature whatsoever are given or intended. Any person using this information should rely on their own enquiries

