



morton.

PYRMONT 15D/5 Tambua Street

 3  2  2

Take advantage of this unique opportunity to acquire a sublime 15th level residence located on Pyrmont's prized northern peninsula - Jacksons Landing. With breathtaking views of the Harbour Bridge, Anzac Bridge and Blackwattle Bay, this perfectly positioned designer apartment has the finest of finishes with stunning contemporary design.

- Enormous living/dining opens to balcony with harbour backdrop
- Soaring ceilings with floor to ceiling glass frame expansive views
- State of the art kitchen with European stainless steel appliances
- King sized bedrooms all with balconies, built-ins and views
- Master with walk through wardrobes to superbly crafted ensuite
- 2nd full sized bathroom and guest powder room
- Automated blinds and exterior privacy screens
- Dual side by side secure parking plus storage
- Multi-zone ducted reverse-cycle air conditioning

View

As advertised or by appointment

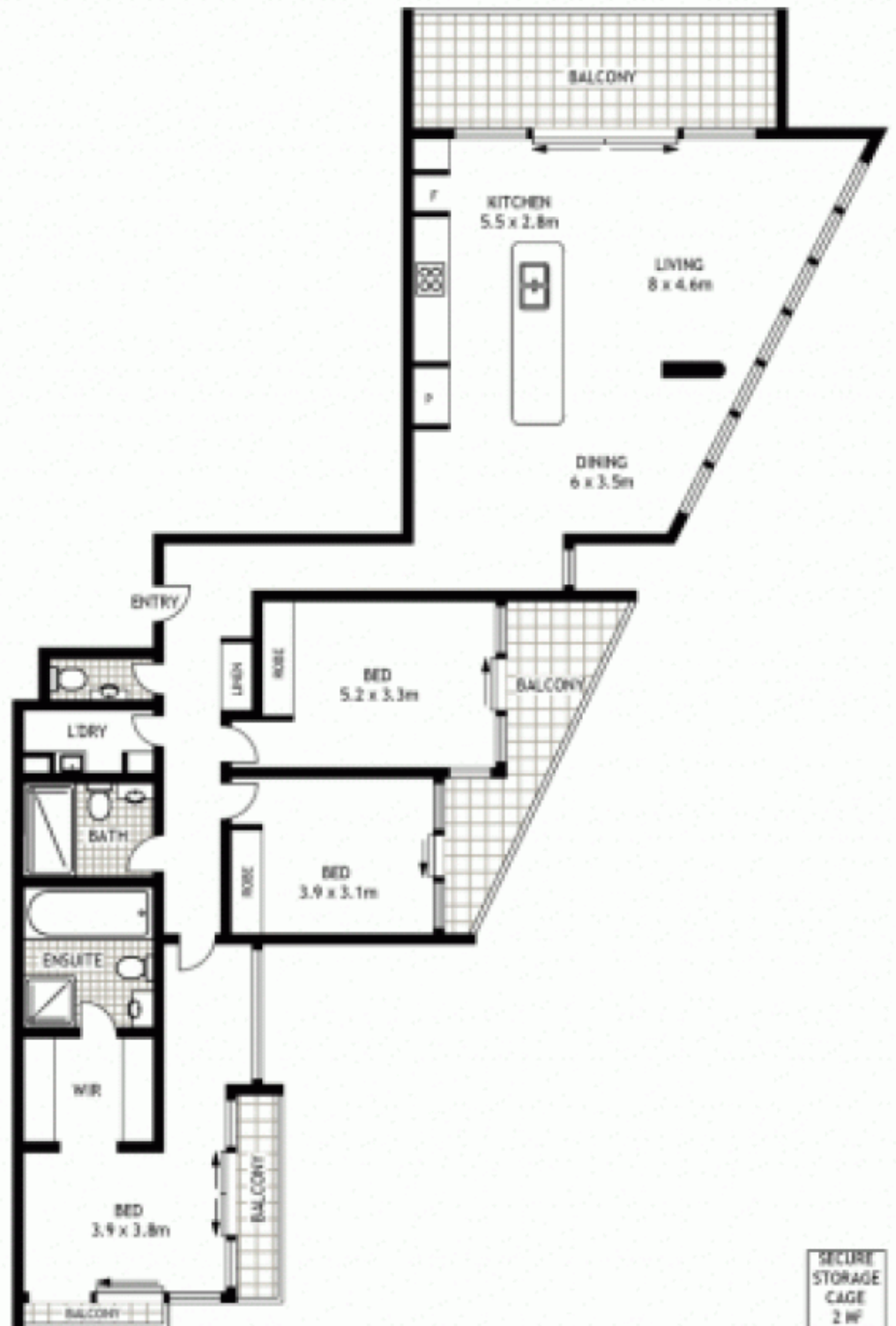
Agent

Ian Qiu

 0447 696 425

 ian@morton.com.au

morton.com.au



SECURE STORAGE CAGE
2 WF

LEVEL FIFTEEN



150/15 TAMBUA STREET

PYRAMONT

SCAPE Floor Planning Disclaimer: This floor plan is conceptual only. It is provided for illustrative purposes only and should not be relied upon. We make no guarantee as to the correctness of this plan. All interested parties should make and rely on their own enquiries in determining the accuracy of the information contained in this floor plan.