



morton.

Pyrmont 4/9 Quarry Master Drive

🛏 2 🚿 2 🚗 1

Immaculately maintained and presented to the market for the first time since construction, this stunning residence offers a superior lifestyle of understated sophistication. Appointed with quality contemporary finishes and filled with the light of a coveted eastern aspect, it is simply a short stroll to the water's edge.

- Impressively proportioned over two inviting levels
- Open plan living with defined entertaining areas
- Deluxe granite kitchen with Smeg gas appliances
- Generous master complete with ensuite and built-ins
- Landscaped common grounds, pool and a gym
- Garage, balconies, full brick and plantation shutters
- Leafy outlook, European laundry and video intercom

View

As advertised or by appointment

Agents

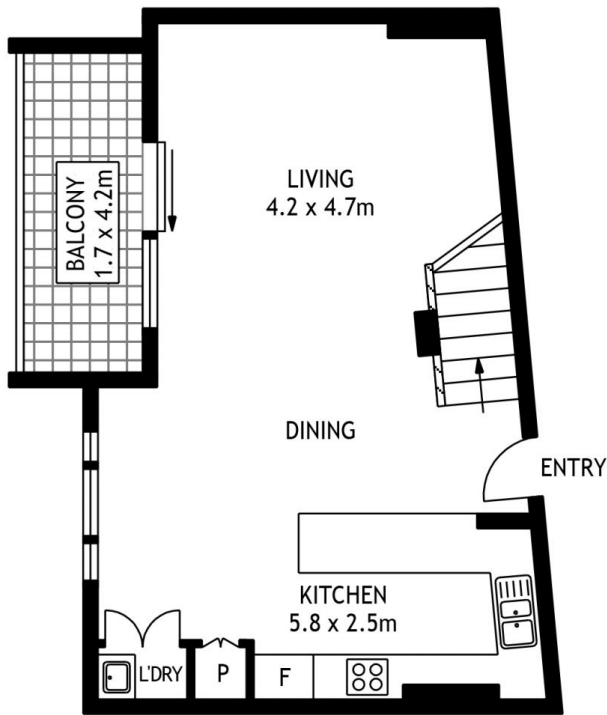
Ian Qiu

📞 0447 696 425
✉ ian@morton.com.au

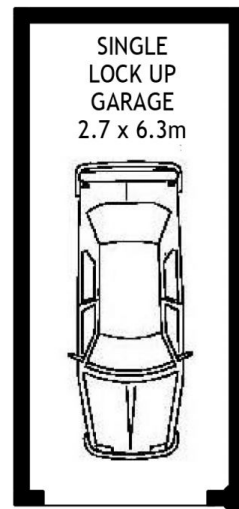
Natasha Giannone

📞 0438 683 859
✉ natasha@morton.com.au

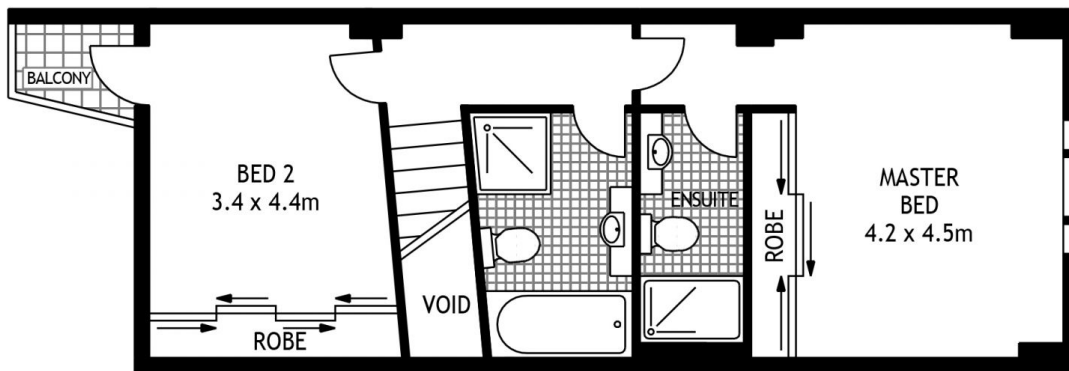
morton.com.au



FIRST FLOOR



BASEMENT



SECOND FLOOR



4/9 QUARRYMASTER DRIVE

PYRMONT

SCAPE Floor Planing Disclaimer: This floor plan is conceptual only. It is provided for illustrative purposes only and should not be relied upon. We make no guarantees to the correctness of this plan. All interested parties should make and rely on their own enquiries in determining the accuracy of the information contained in this floor plan.