



morton.

Ultimo 44/288 Wattle Street

1 1 1

In a premier position just moments to Wentworth Park, this impressive residence occupies a prized top floor setting. Well appointed and ideally low maintenance, this is a premier opportunity for the first time buyer or investor seeking to capitalise on the area's strong tertiary student community.

- Combined lounge and dining area flows to a balcony
- Master bedroom is complete with a built-in wardrobe
- Contemporary granite kitchen boasts gas appliances
- Indoor pool, gym, spa and secure single parking space
- European laundry, ducted air conditioning and intercom
- With the ongoing possibility of a significant rental yield

View

As advertised or by appointment

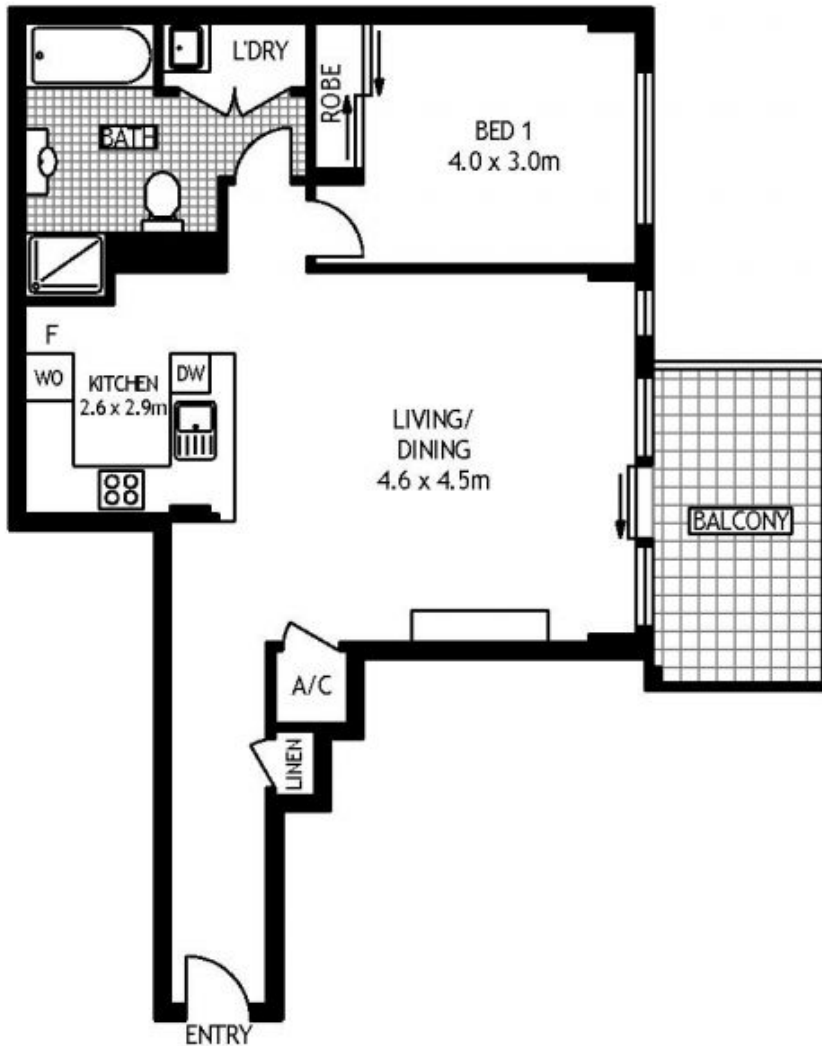
Agent

Ian Qiu

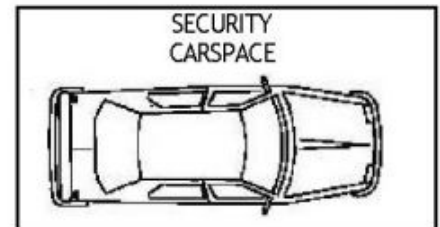
0447 696 425

ian@morton.com.au

morton.com.au



SEVENTH FLOOR



44/288 WATTLE STREET

ULTIMO

SCAPE Floor Planing Disclaimer: This floor plan is conceptual only. It is provided for illustrative purposes only and should not be relied upon. We make no guarantees to the correctness of this plan. All interested parties should make and rely on their own enquiries in determining the accuracy of the information contained in this floor plan.