



morton.

Pyrmont 401/25 Refinery Drive

 2  2  1

This award-winning apartment opens to embrace spectacular views across the water to the Anzac Bridge and White Bay, this stunning apartment defines effortless contemporary living in the heart of Jacksons Landing. Intuitively configured to maximise the flow of space and light, this is an offering of unquestionable quality.

- In the prestigious and award winning Escarpment
- Bathed in the natural light of a north-western aspect
- Impressive open living for indoor/outdoor entertaining
- Spacious master with an ensuite and mirrored walk-in
- Sleek CaesarStone Smeg gas kitchen
- Large balcony, air con and European laundry
- Video intercom and storage cage

View



As advertised or by appointment

Agents

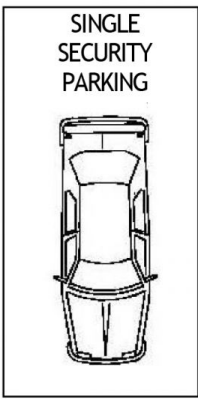
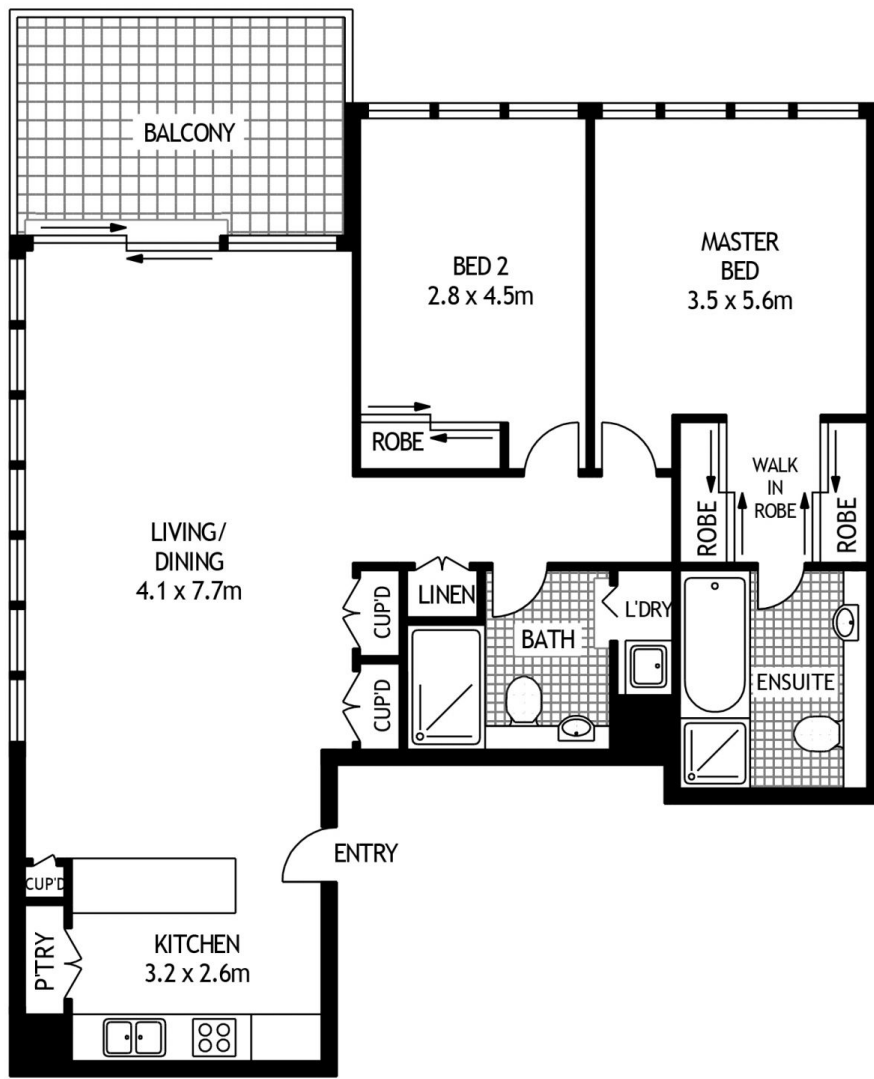
Ian Qiu

 0447 696 425
 ian@morton.com.au

Natasha Giannone

 0438 683 859
 natasha@morton.com.au

morton.com.au



FOURTH FLOOR



401/25 REFINERY DRIVE

PRYMONT

SCAPE Floor Planning Disclaimer: This floor plan is conceptual only. It is provided for illustrative purposes only and should not be relied upon. We make no guarantees to the correctness of this plan. All interested parties should make and rely on their own enquiries in determining the accuracy of the information contained in this floor plan.