



morton.

Pyrmont 104/35 Bowman Street

 2  2  2

An executive escape of unquestionable finesse and sophistication, this exceptionally spacious 141sqm apartment quietly rests in a boutique block of 24. Opening to sensational views across parklands to the sparkling harbour waters, this is a low maintenance haven in a prestigious blue ribbon community.

- Designer interiors awash with the light of a north aspect
- Stylishly finished with quality appointments throughout
- Generous master has an ensuite and walk-in wardrobe
- Study alcove, ducted air conditioning and storage cage
- CaesarStone gas kitchen, ultra spacious 2nd bedroom
- Side by side parking, corner setting, pet-friendly, balcony
- Well proportioned, ideal for the couple/investor/downsizer

View



As advertised or by appointment

Agents

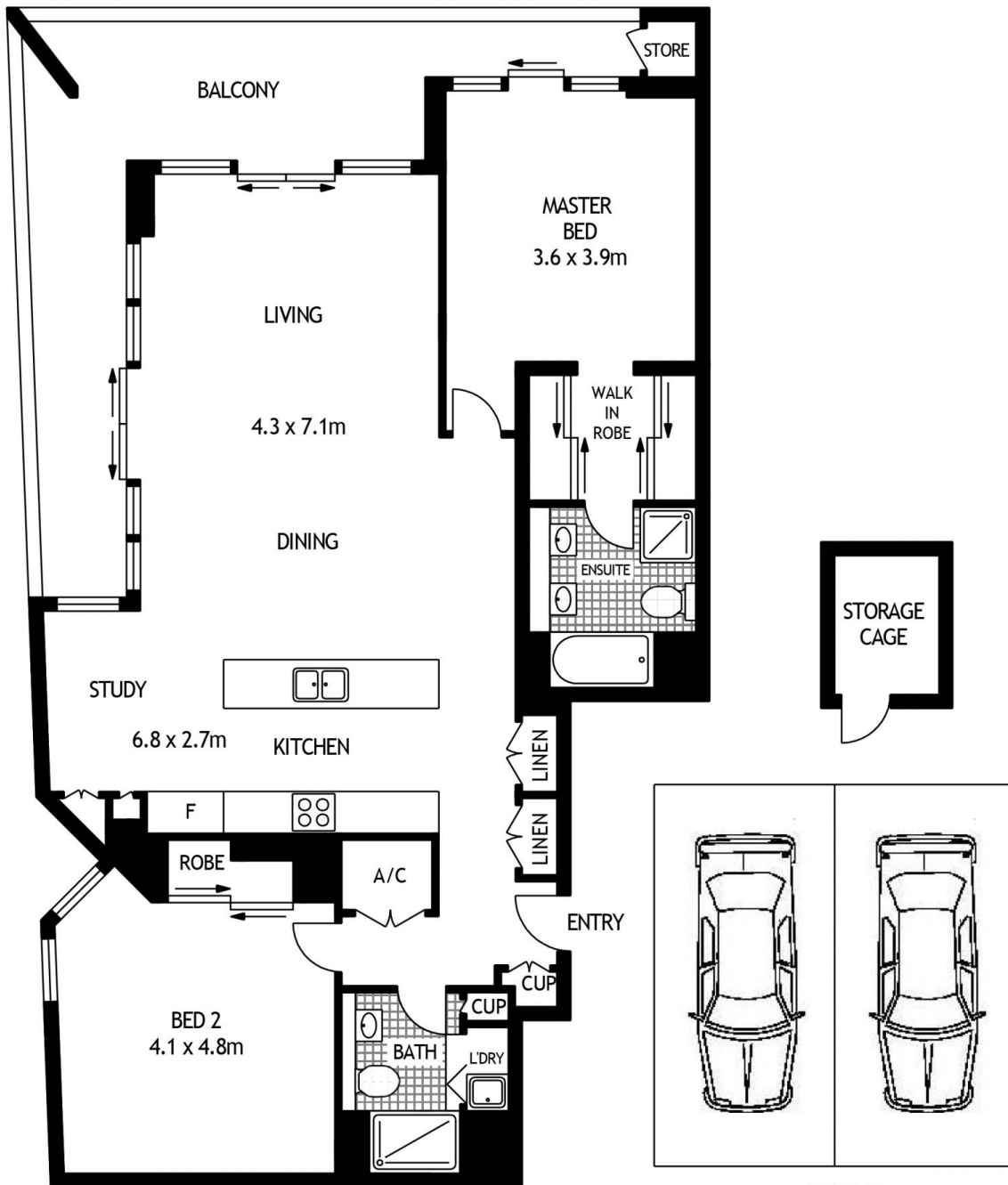
Ian Qiu

 0447 696 425
 ian@morton.com.au

Natasha Giannone

 0438 683 859
 natasha@morton.com.au

morton.com.au



LEVEL 1



104/35 BOWMAN STREET

PYRMONT

SCAPE Floor Planning Disclaimer: This floor plan is conceptual only. It is provided for illustrative purposes only and should not be relied upon. We make no guarantees to the correctness of this plan. All interested parties should make and rely on their own enquiries in determining the accuracy of the information contained in this floor plan.