



# morton.

**Woolloomooloo** 226/6 Cowper Wharf Roadway

2 2 1

A blue ribbon opportunity well suited to the executive, professional couple or investor seeking a designer lifestyle in an iconic harbour community, this exceptional residence defines contemporary living. Embracing views across the water to Potts Point, this is a home of unquestionable pedigree.

- Awash with morning light and soothed by sea breezes
- Open entertaining, distinct lounge and dining areas
- Spacious master boasts a walk-in robe and an ensuite
- Gourmet kitchen, granite benches and gas appliances
- Deluxe bathrooms, main with bath, European laundry
- Ducted air conditioning, video security, sunny balcony

## View

As advertised or by appointment

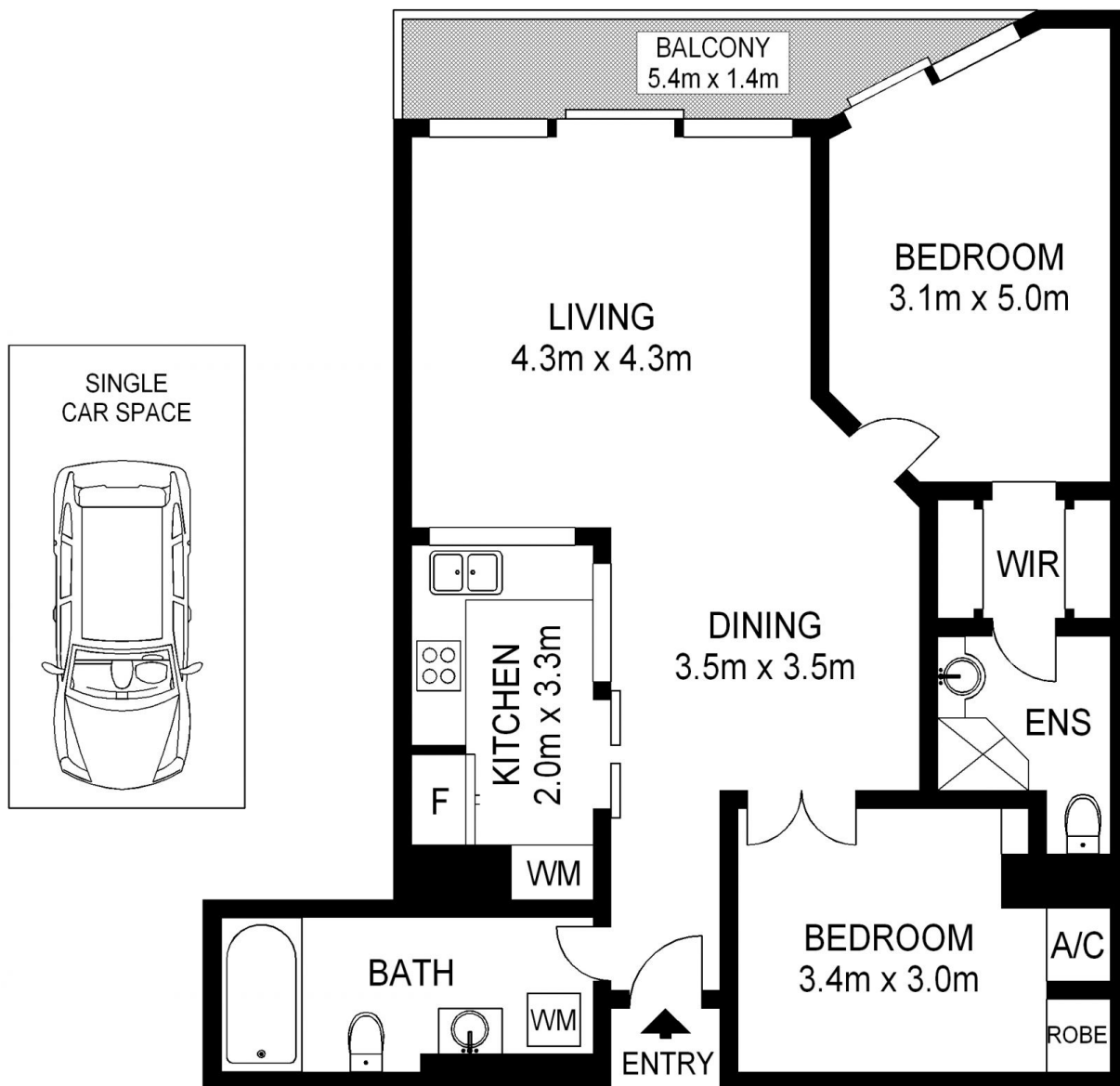
## Agent

**Noel Jenkins**

0410 593 694

noel@morton.com.au

**morton.com.au**



morton.

226/6 Cowper Wharf Road, WOOLLOOMOOLOO

Not to scale • All measurements are approximate • Drawn for marketing purposes only • Floorplan by © Industrie Media

