



morton.

Woolloomooloo 542A/6 Cowper Wharf Roadway

2 2 1

Ultra stylish and occupying a premier top floor setting in a much desired locale, this stunning dual level apartment presents a low maintenance lifestyle of warmth and convenience. In a highly sought-after heritage community, uninterrupted views stretch across the water to the leafy shores of Potts Point.

- Beautifully presented with quality appointments
- Invitingly well proportioned combined lounge and dining
- Generous master has an ensuite, walk-in robe/dressing room
- Sleek kitchen with granite benches and gas appliances
- Vaulted ceilings, reverse cycle air conditioning, 24 hour security
- Oversized second room on lower level, 2nd bathroom and internal laundry
- A prized offering for the first time buyer or savvy investor

View

As advertised or by appointment

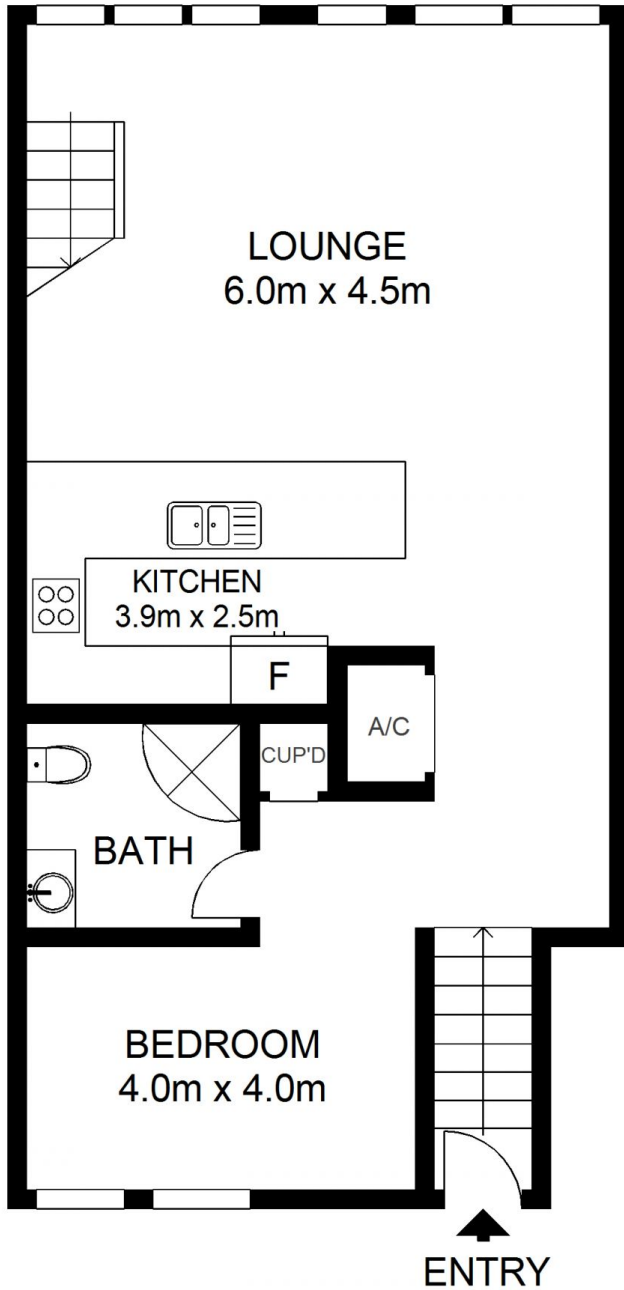
Agent

Noel Jenkins

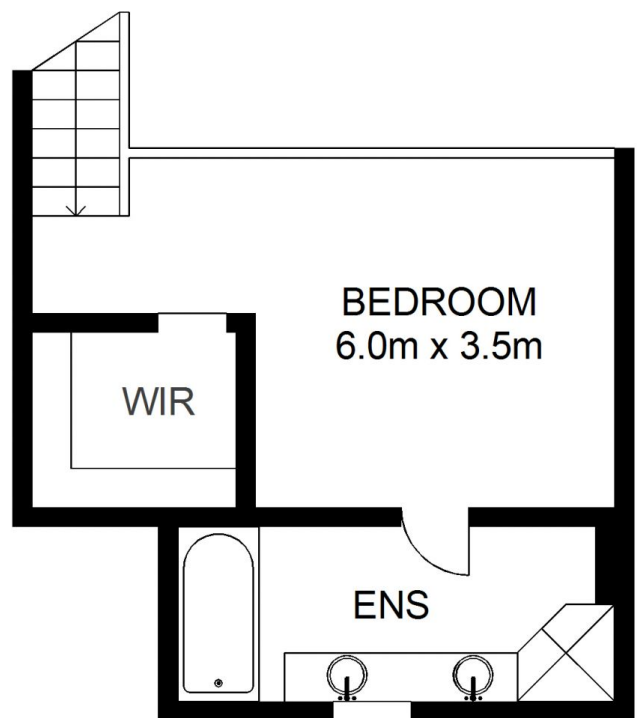
0410 593 694

noel@morton.com.au

morton.com.au



ENTRY LEVEL



UPPER LEVEL

morton.

542A/6 Cowper Wharf Road, WOOLLOOMOOLOO

Not to scale • All measurements are approximate • Drawn for marketing purposes only • Floorplan by © Industrie Media

