



morton.

Sydney 1503/157 Liverpool Street

 2  2  1

Defined by its prized location and uninterrupted panoramic views, this luxury residence at The Hyde offers a fantastic opportunity to invest in the elite Hyde Park precinct. Apartments in the building are highly coveted, and this north facing 15th floor apartment capitalizes on the stunning outlook - above the tree-tops of Hyde Park, St Marys Cathedral and beyond to dazzling Sydney Harbour.

- Spacious open plan lounge and dining area
- All-weather entertaining balcony
- Designer integrated kitchen with Miele appliances
- Enormous master suite with walk-through robe
- Spacious 2nd bedroom with built-in robes and balcony access
- Well-appointed and stylish main bathroom
- Internal laundry, ample storage and reverse cycle air con
- 1 car space and secure entry
- Resident's 25m infinity pool, gymnasium, spa and sauna
- Pet friendly residence with executive 24hr concierge service

View

As advertised or by appointment

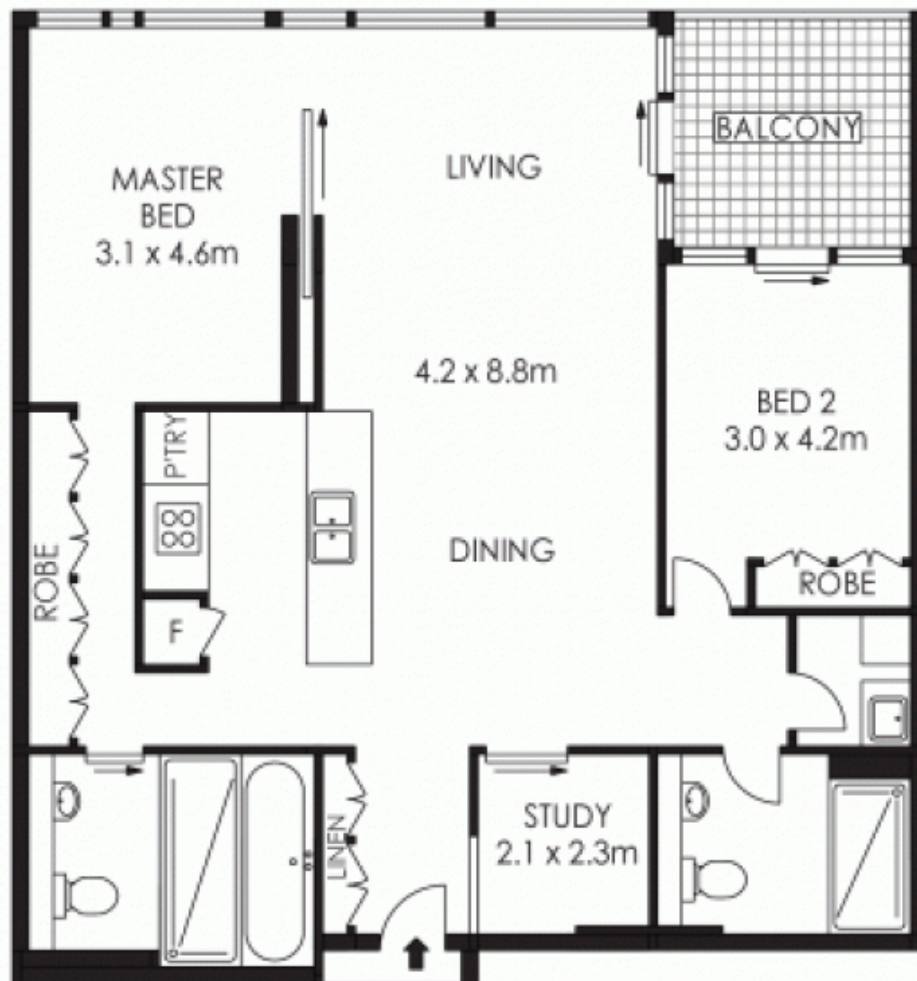
Agent

Morton RE

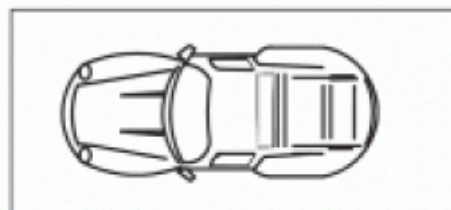
 [info@morton.com.au](tel:)

morton.com.au

MORTON & MORTON



CARSPACE



1503/157 Liverpool Street, Sydney

The information above is provided in good faith and has been provide to us from a variety of sources. We have not verified whether the information is accurate and do not have any belief one way or other in its accuracy. We do not accept any responsibility to any person for its accuracy and do no more than pass it on. All interested parties should rely on their own inquiries in order to determine whether or not this information is in fact accurate.