



morton.

MILLERS POINT 301/1 Pottinger Street

2
 2
 1

Flawlessly finished with an exacting attention to detail and exquisite designer finishes, this superb 132sqm residence flows over two inviting split levels. In a highly sought after boutique building, it is within moments to Walsh Bay restaurant culture, theatres and historic harbourside walks.

- A peaceful lifestyle offering with no expense spared
- Opening to the light of a due northern perspective
- Palatial master with walk-in robe and deluxe ensuite
- Chic CaesarStone kitchen, stainless gas appliances
- Welcoming open plan entertaining areas, balconies
- Study alcove, ducted air conditioning, storage cage
- Pool, gym, bespoke cabinetry and a single car space

View

As advertised or by appointment

Agents

Sarah Fowell



sarah@morton.com.au

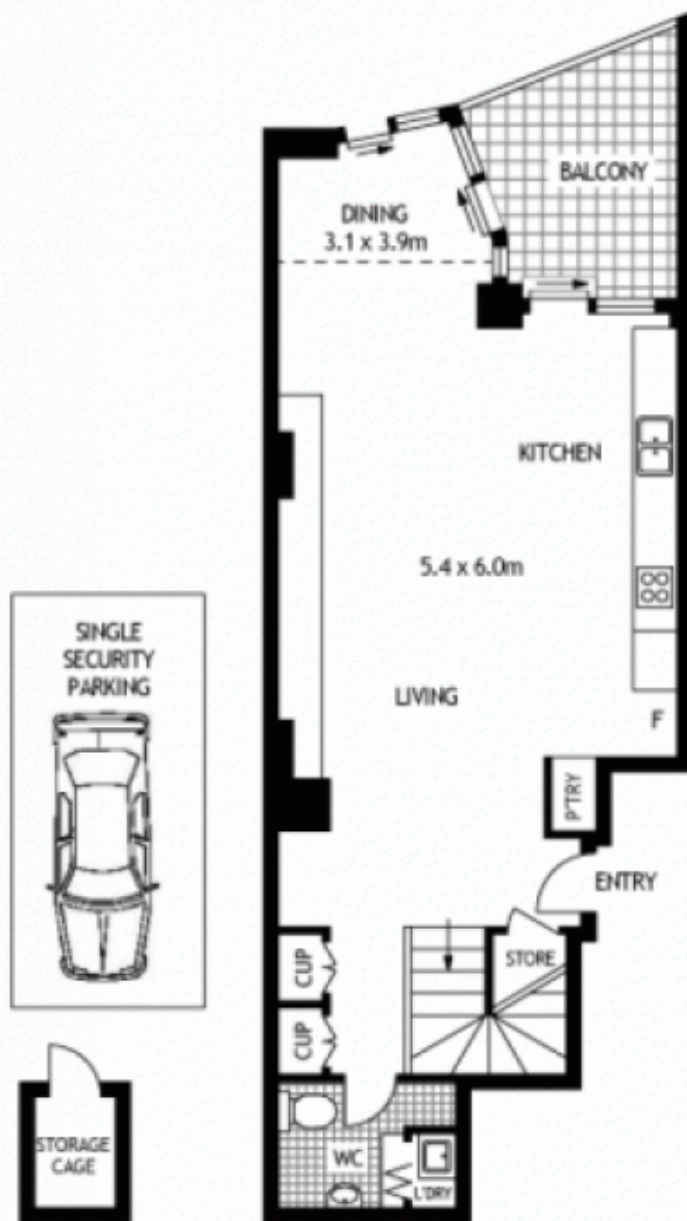
Ettiene West



0410 593 749

ettiene@morton.com.au

morton.com.au



THIRD FLOOR



FOURTH FLOOR



301/1 POTTINGER STREET

MILLERS POINT

SCAPE Floor Planing Disclaimer: This floor plan is conceptual only. It is provided for illustrative purposes only and should not be relied upon. We make no guarantees to the correctness of this plan. All interested parties should make and rely on their own enquiries in determining the accuracy of the information contained in this floor plan.