



morton.

SYDNEY 702/35 Shelley Street

 2  2  1

Situated in a very desirable position on level 7 of Kings Street Wharf this 105 sqm stylish designer apartment boasts beautiful appointments and stunning Darling Harbour views.

King Street Wharf is located in the heart of the harbour district with world class restaurants and other popular attractions on your door step. On-site leisure facilities includes a concierge service, pool, gymnasium, bbq area, sauna and security.

The luxury property with views from all rooms presents an excellent offering with the opportunity to live in or rent.

- Stylish kitchen with stainless bench tops and Gaggenau appliances
- Master bedroom with wardrobes and large marble bathroom
- Second bedroom with wardrobes
- Attractive main bathroom
- Open plan living area onto balcony overlooking the harbour
- Separate study
- Internal Laundry

View

As advertised or by appointment

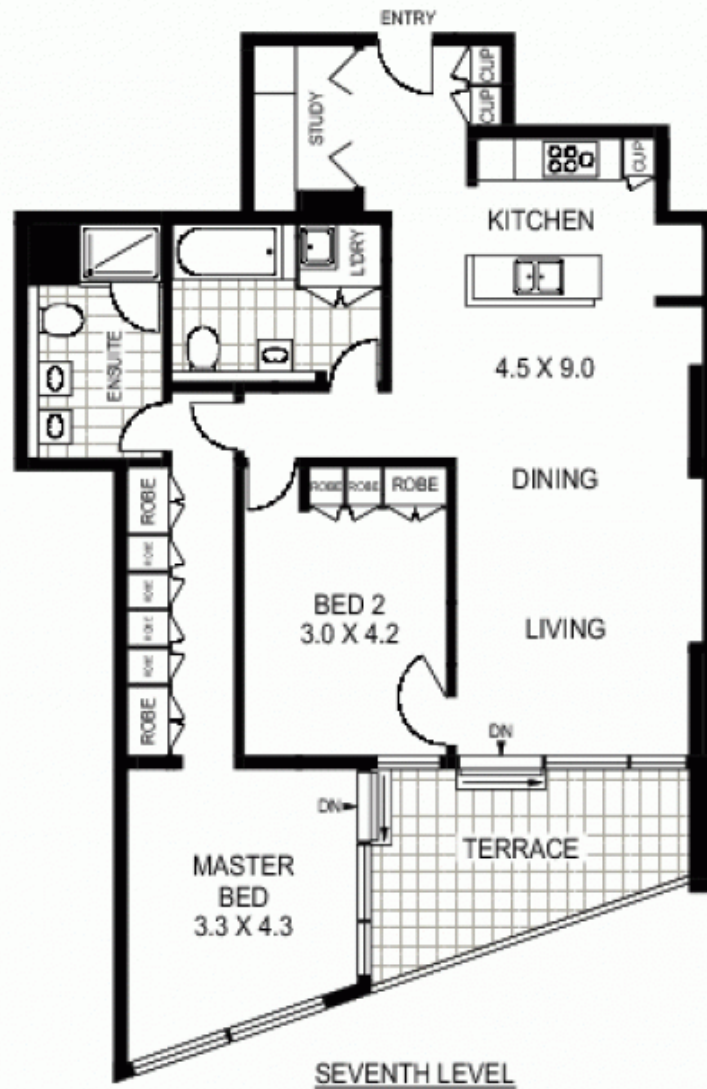
Agent

Ettiene West

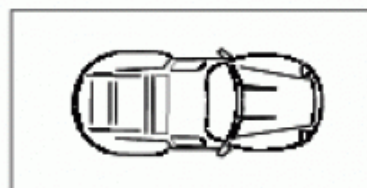
 0410 593 749

 ettiene@morton.com.au

morton.com.au



SEVENTH LEVEL



NOTE :- ONE CAR SPACE
AVAILABLE ON
SECURITY PARKING

GROUND LEVEL



702/35 SHELLEY STREET

SYDNEY

APPROX : GROSS INTERNAL AREA :- 94 SQM

Floor Plan Disclaimer: Mind the Gap (mtg) floor plans / site plans are intended as a guide only. No representations or warranties of any nature whatsoever are given or intended and any person using this information should always rely on their own enquiries. mtg property marketing services - 1300 133 145 - photography, floor plans, virtual tours, video tours, copywriting, project marketing - www.mindthegap.com.au