



morton.

SYDNEY 806/45 Shelley Street

 2  2  1

This 114sqm north facing apartment is the epitome of leading edge inner city living for people seeking a lifestyle whose hallmark is a sophisticated but low maintenance luxury or gilt edged investment. Set in a blue ribbon precinct, this ultra spacious executive apartment is located on the top floor and has stunning views of Darling Harbour.

- Stunning Harbour views
- Stroll comfortably to the buzz of King Street Wharf and your office
- North facing full-width entertainers' balcony with harbour views
- Spacious sun filled living area
- Large master bedroom with ensuite and walk-in robe
- Second bedroom with built-ins,
- Separate study room
- Designer gas kitchen with Corian benchtops and Blanco appliances
- Luxurious mosaic second bathroom with hideaway laundry
- Currently leased for \$845 per week

View

As advertised or by appointment

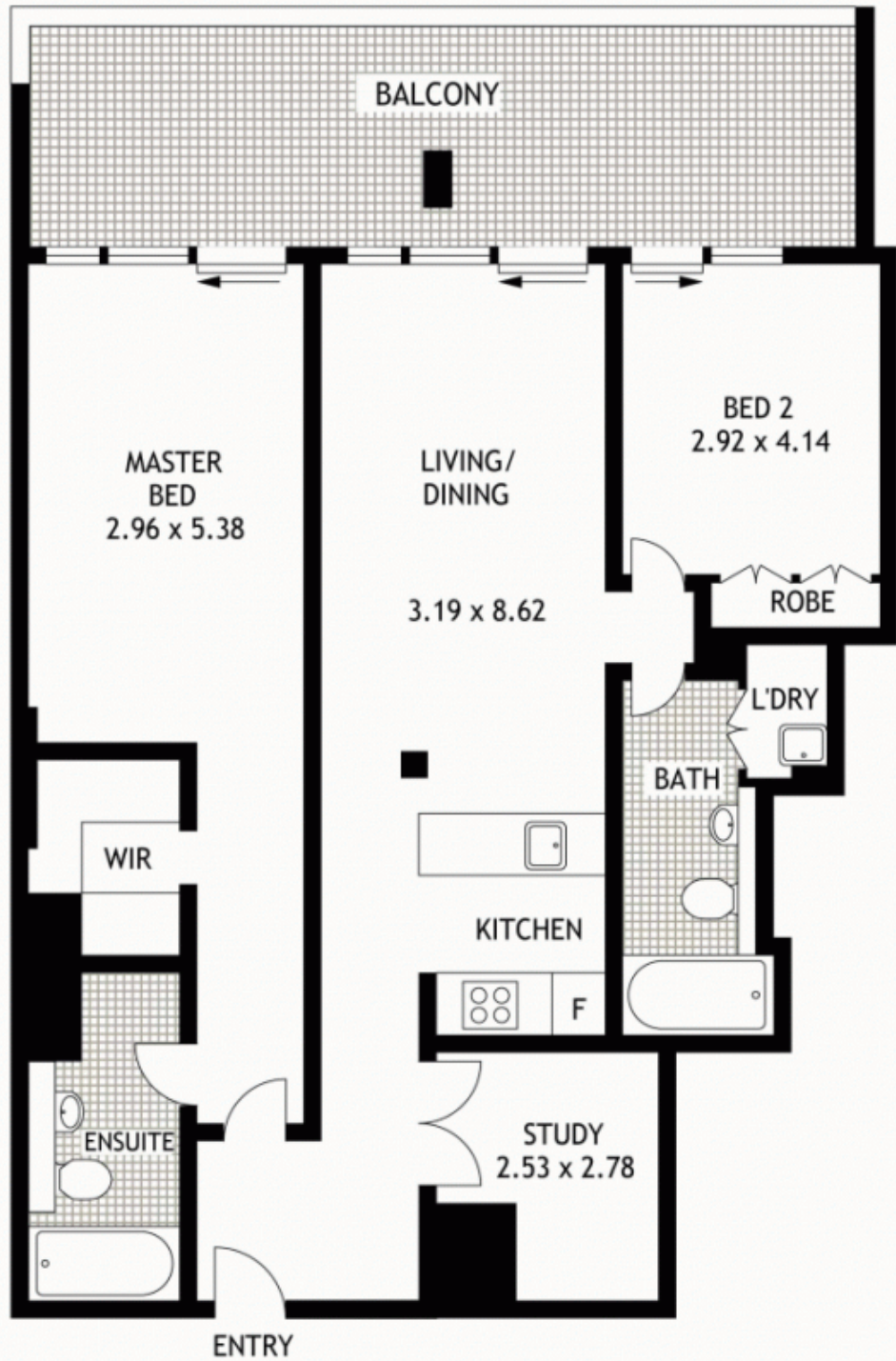
Agent

Ettiene West

 0410 593 749

 ettiene@morton.com.au

morton.com.au



EIGHTH FLOOR



806/45 SHELLEY STREET

SYDNEY

SCAPE Floor Planing Disclaimer: This floor plan is conceptual only. it is provided for illustrative purposes only and should not be relied upon. We make no guarantees to the correctness of this plan. All interested parties should make and rely on their own enquiries in determining the accuracy of the information contained in this floor plan.