



morton.

SYDNEY 10/2 Philip Street

 1  1  1

This light filled apartment with harbour and city views is positioned in arguably the best harbour front location in Sydney. Being one of only two one bedroom apartments located in the prestige Quay building, this is an excellent opportunity to purchase a city pad or investment apartment in a very desirable location.

- Living area with wrap around windows
- Bedroom with built-in cupboards
- Marble bathroom
- Modern kitchen, separate laundry
- Security parking, storeroom, 24 hour concierge
- Five star facilities, indoor pool, spa, squash court, gym

View

As advertised or by appointment

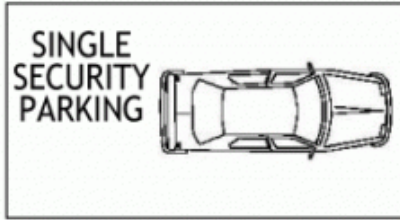
Agent

Ettiene West

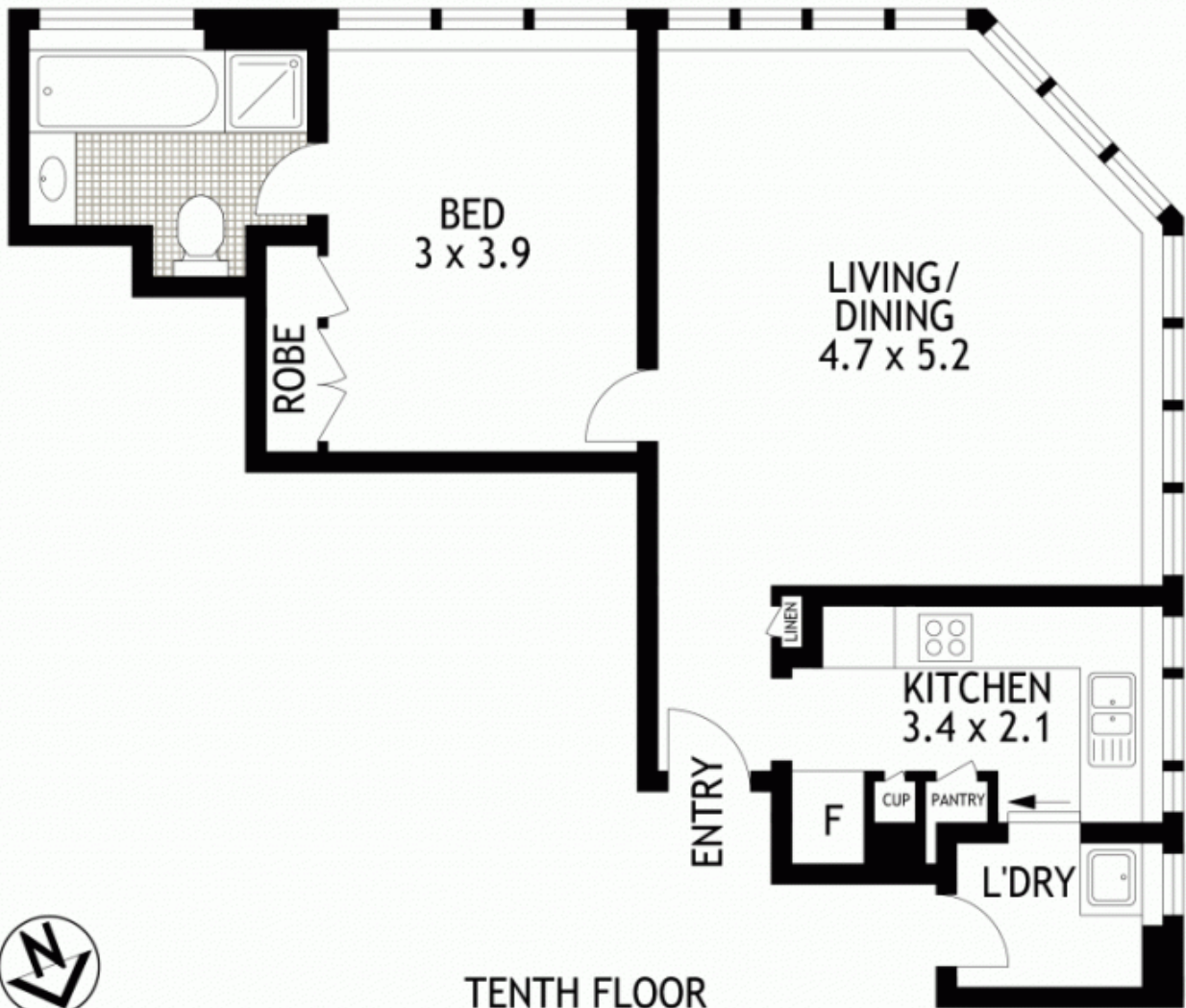
 0410 593 749

 ettiene@morton.com.au

morton.com.au



SEVENTH FLOOR



TENTH FLOOR

10.1/2 PHILLIP STREET

CIRCULAR QUAY

SCAPE Floor Planing Disclaimer: This floor plan is conceptual only. it is provided for illustrative purposes only and should not be relied upon. We make no guarantees to the correctness of this plan. All interested parties should make and rely on their own enquiries in determining the accuracy of the information contained in this floor plan.