



morton.

SYDNEY 38/1 Macquarie Street

2 2 1

Occupying a prized position in 'Bennelong One' - what can only be described as Sydney's ultimate address - this exclusive residence is a home of breathtaking rarity and distinction that opens to embrace spectacular panoramic views across the Quay to the majestic arch of the world famous Harbour Bridge.

- A stunning lifestyle of unquestionable quality over 127sqm
- Impeccably well presented with designer appointments
- Spacious double bedrooms, luxury master with ensuite
- Expansive open plan living, large entertaining balcony
- Granite kitchen complete with superior gas appliances
- Secure undercover parking and ducted air conditioning
- Concierge, heated pool, gymnasium and a storage cage

View

As advertised or by appointment

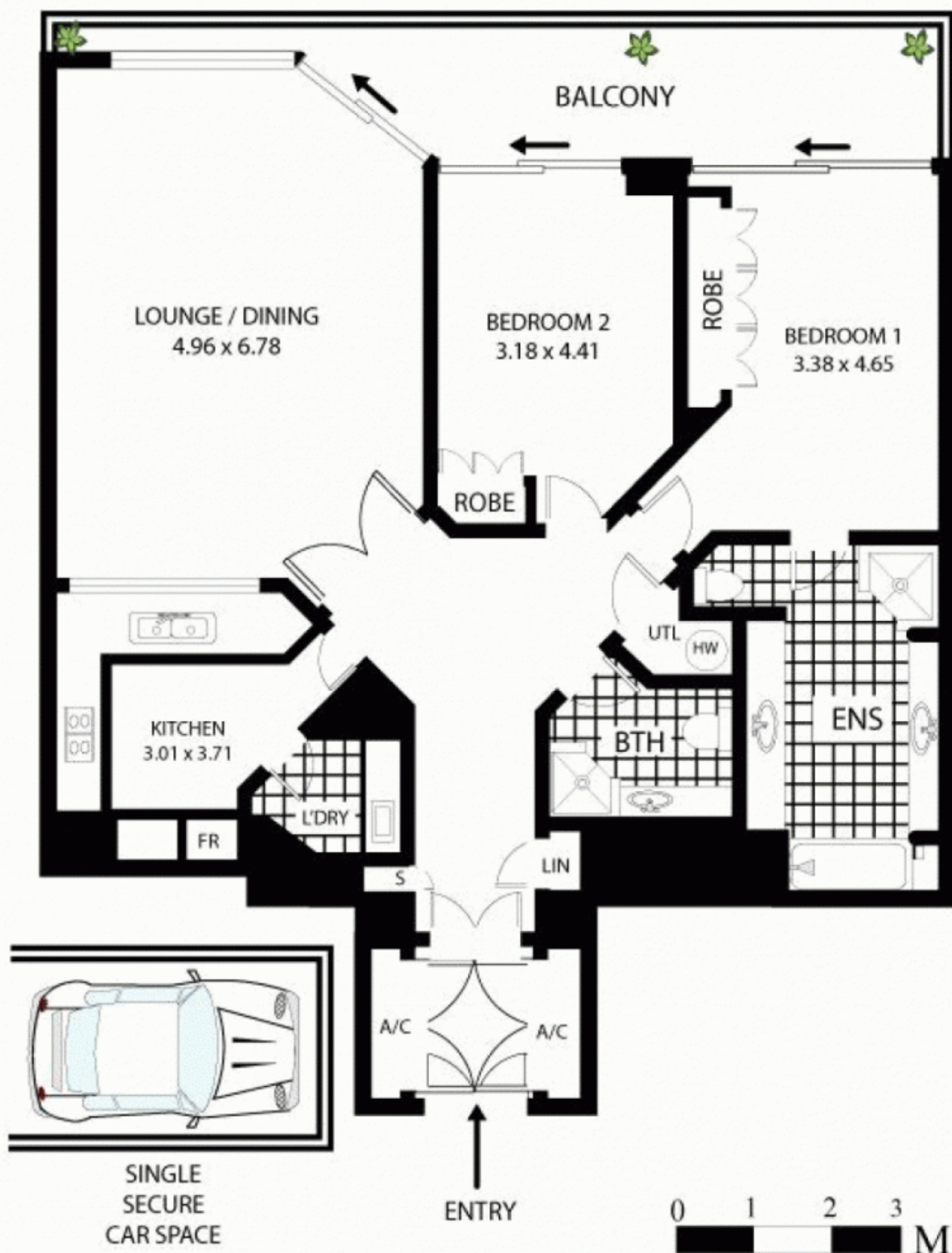
Agent

Ettiene West

0410 593 749

ettiene@morton.com.au

morton.com.au



1 Macquarie St Sydney

All measurements are approximate only. Plan is provided as an indication of layout

sydney cove
DISCOVERY

