



# morton.

**SURRY HILLS** 1022/20 Pelican Street

1 1 1

Peacefully set in one of inner Sydney's most desirable residential communities and flowing over an impressive 75sqm, this north east facing apartment offers cutting-edge community living.

An iconic offering from Wood/Marsh Architecture, it is just metres to cafe society.

- Dominated by stunning panoramic district views
- Expansive open plan lounge and dining areas
- Extremely well proportioned northfacing entertaining balcony
- Superb granite kitchen, floor-to-ceiling windows
- Heated outdoor pool, landscaped gardens, gym
- Study alcove, pet friendly, concierge, air con
- Master with built-ins, internal laundry and storage
- Located on the north easterly corner
- One of only 3 one bedroom apartments with a similar floorplan

## View

As advertised or by appointment

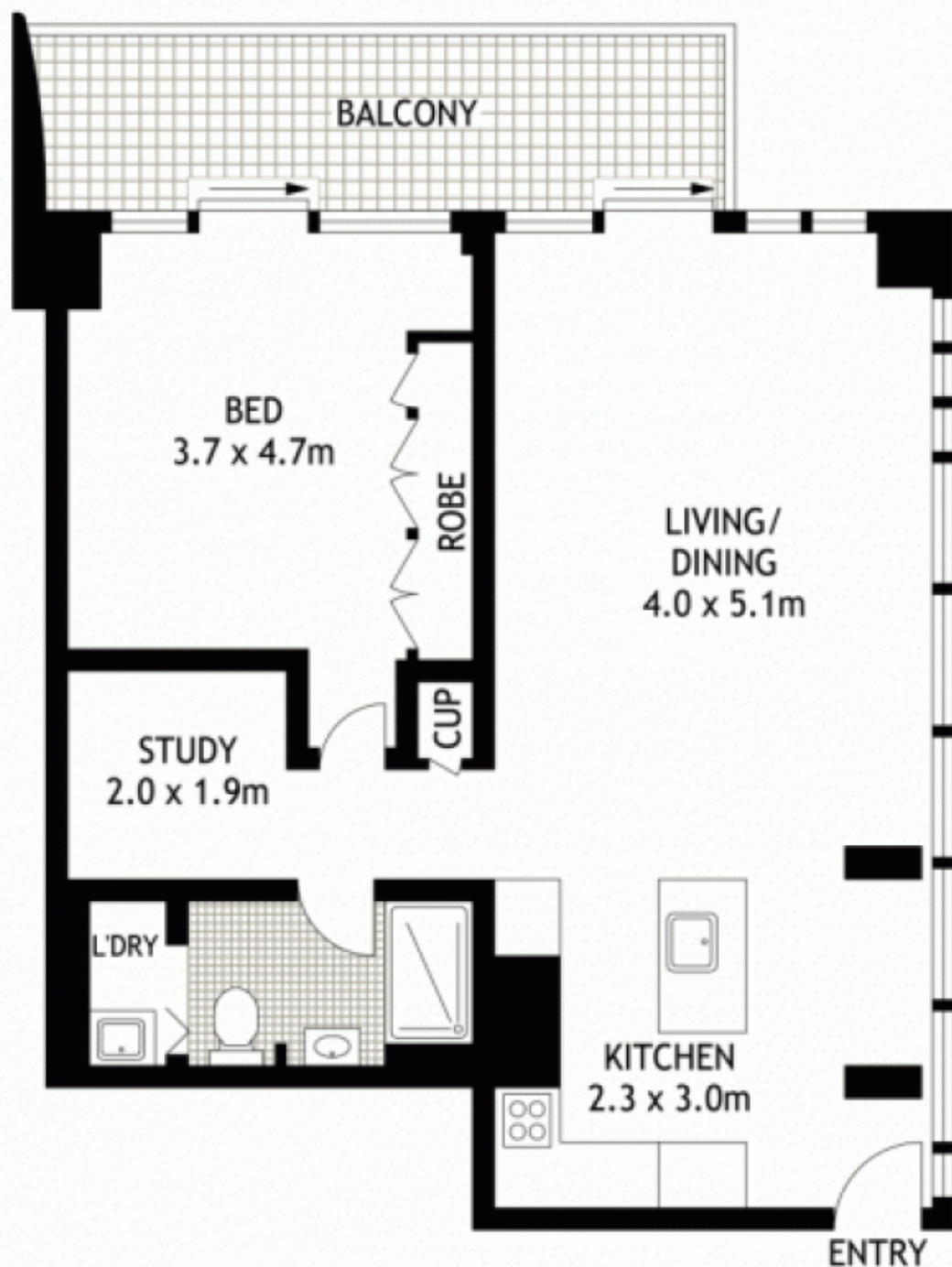
## Agent

**Ettiene West**

0410 593 749

ettiene@morton.com.au

[morton.com.au](http://morton.com.au)



## TENTH FLOOR



**1022/20 PELICAN STREET**

**SURRY HILLS**

**SCAPE Floor Planing Disclaimer:** This floor plan is conceptual only. It is provided for illustrative purposes only and should not be relied upon. We make no guarantees to the correctness of this plan. All interested parties should make and rely on their own enquiries in determining the accuracy of the information contained in this floor plan.