



morton.

SYDNEY 1001/157 Liverpool Street

 2  2  1

A fantastic opportunity to live on Hyde Park in Sydney's newest and most sought after residential building; The Hyde. Being one of only four 118sqm two bed + study floor plans, this rare level 10 offering captures the intimate leafy green expanse of Hyde Park framed by the iconic city skyline. Spacious open plan living/dining area opens onto a covered entertainer's balcony with gas connectivity, perfect for summer bbqs and enjoying the north facing park views highlighted with distant harbour glimpses. The two good sized bedrooms both have built-ins which are separated by a large study, or second living area. Additional features include reverse cycle air conditioning, separate laundry, ample storage, video intercom, high ceilings and one security car space. The two bathrooms are well appointed and the open plan kitchen with caesarstone bench tops, gas cooking and stainless steel appliances is sure to impress. Residents enjoy access to a fabulous 25m indoor pool, high spec gymnasium, sauna, outdoor bbq and sundeck area, residents library plus 24 hour concierge. This property is sure to be popular, contact Adrian on 0410 444 044 for more details. Strata: \$2023pp

morton.com.au

View

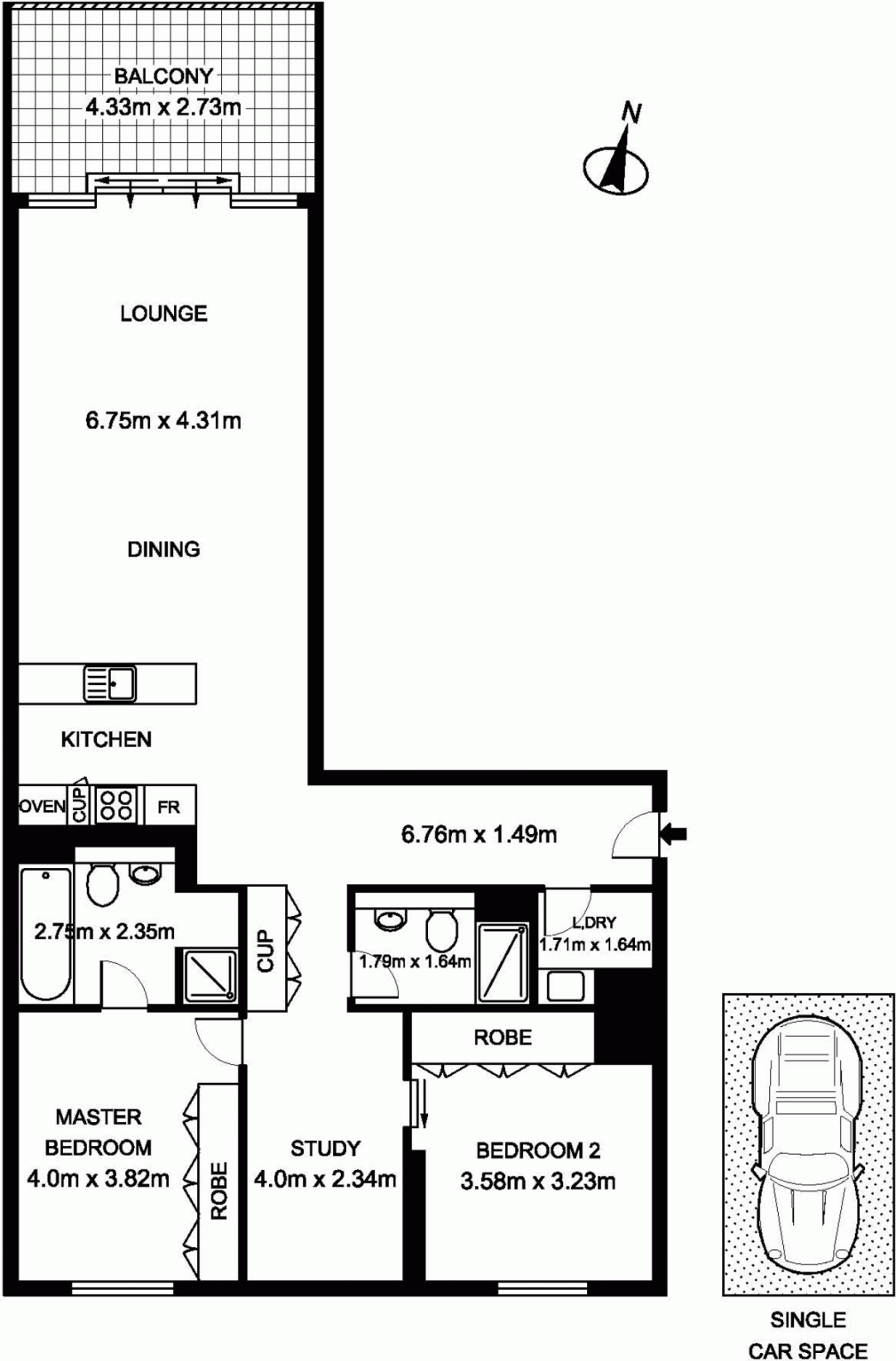
As advertised or by appointment

Agent

Morton RE

 info@morton.com.au

1001/157 Liverpool Street, Sydney



The information above is provided in good faith and has been provided to us from a variety of sources. We have not verified whether the information is accurate and do not have any belief one way or other in its accuracy. We do not accept any responsibility to any person for its accuracy and do no more than pass it on. All interested parties should rely on their own inquiries in order to determine whether or not this information is in fact accurate.
 Floor plan by www.squaremeter.com.au