



morton.

SYDNEY 51/171 Gloucester Street

 1  2  1

Located on level 5 of the stunning Stamford Residences, this 79sqm one bedroom apartment offers a luxurious and convenient lifestyle in the heart of the city.

With a contemporary interior, the apartment comprises one generously sized bedroom, a study nook, and two bathrooms. The spacious, open plan living and dining area boasts timber floors and the kitchen is fully integrated, with stainless steel Miele appliances.

Stamford Residences is situated in the central hub of all that Sydney has to offer, only moments from the Opera House, Circular Quay, theatres, restaurants and the convenience of major transport links at your doorstep.

Features Include:

- Ducted air conditioning
- Secure car space and storage
- Communal rooftop garden & barbeque area
- Indoor pool & gymnasium for residents

morton.com.au

View

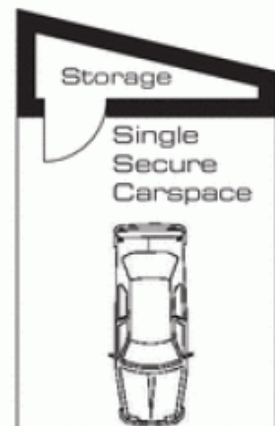
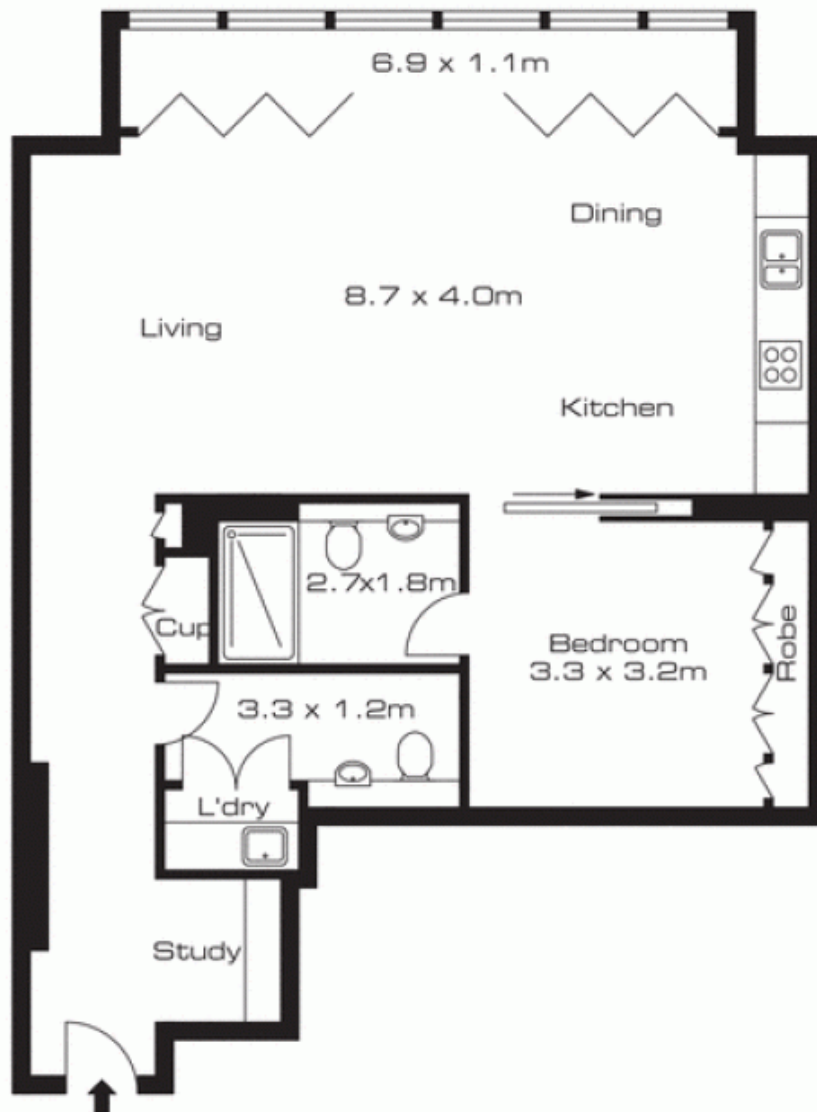
As advertised or by appointment

Agent

Morton RE

 info@morton.com.au

5i/171 Gloucester Street, Sydney



The information above is provided in good faith and has been provide to us from a variety of sources. We have not verified whether the information is accurate and do not have any belief one way or other in its accuracy. We do not accept any responsibility to any person for it pass it on. All interested parties should rely on their own inquiries in order to determine whether or not this information is accurate.

Floor Plan by www.squaremeter.com.au