



# morton.

**Sydney** 12.01/2 Phillip Street

2 
 2 
 1

Opening to embrace views that stretch along the length of Circular Quay to the Harbour Bridge and eastwards across the Royal Botanical Gardens, this exceptional apartment is prestigiously perched high in the exclusive 'The Quay'. Sophisticated, stylish and convenient, this is an address of international renown.

- Well configured, expansive open entertaining areas
- Spacious master has ensuite, balcony, harbour views
- Floor to ceiling windows fill the home with ambient light
- Quality contemporary kitchen, ensuite has a spa bath
- Ducted air conditioning and secure basement storage
- Indoor heated pool, spa, sauna and a squash court

## View

As advertised or by appointment

## Agents

### Sarah Fowell



sarah@morton.com.au

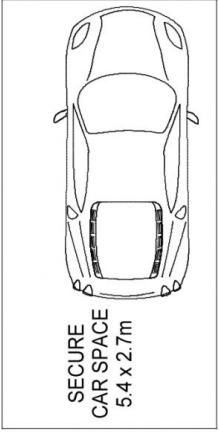
### Ettiene West



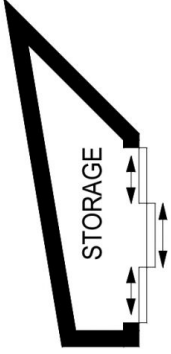
0410 593 749

ettiene@morton.com.au

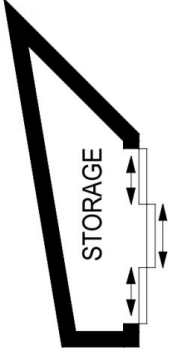
**morton.com.au**



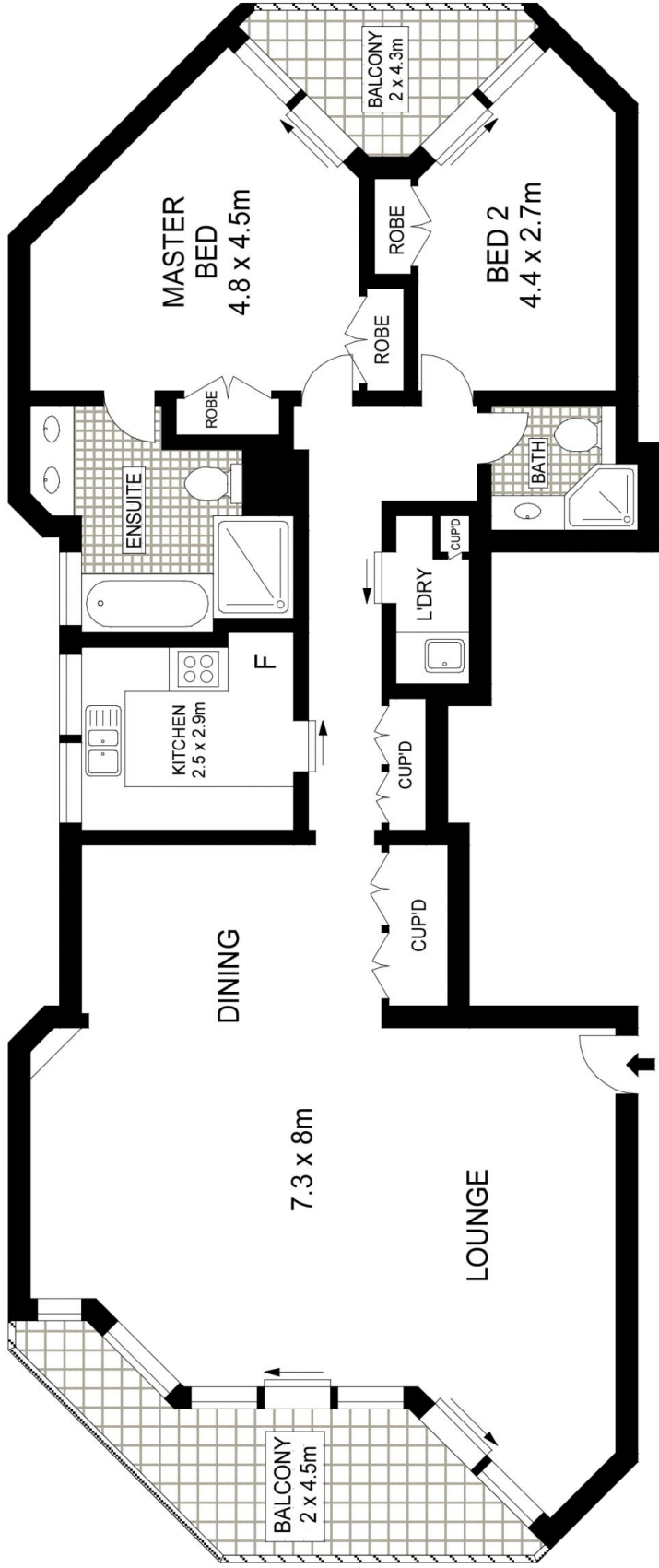
BASEMENT



BASEMENT



BASEMENT



LEVEL TWELVE



es. Indicative only. Dimensions are approximate. All information contained herein is gathered from sources we believe to be reliable. However we cannot guarantee its accuracy and interested persons should rely on their own enquiries.