



morton.

Sydney 1105/157 Liverpool Street

 2  2  1

Defined by its prized location and uninterrupted panoramic views, this luxury residence at The Hyde offers a fantastic opportunity to invest in the elite Hyde Park precinct. Apartments in the building are highly coveted, and this north facing 12th floor apartment capitalizes on the stunning outlook - above the tree-tops of Hyde Park, St Marys Cathedral and beyond to dazzling Sydney Harbour.

- Sought after spacious two bedroom + study layout
- Ample natural light flowing throughout this lovely north facing apartment
- Living room offers access to the balcony with stunning views across Sydney
- 118sqm apartment with generous living and dining areas with adjoining gourmet kitchen
- Two large bedrooms main with deluxe ensuite, both with built-in wardrobes
- Additional features include ducted a/c, internal laundry, a security car space and intercom access
- Residents have the convenience of an executive 24 hour

View

As advertised or by appointment

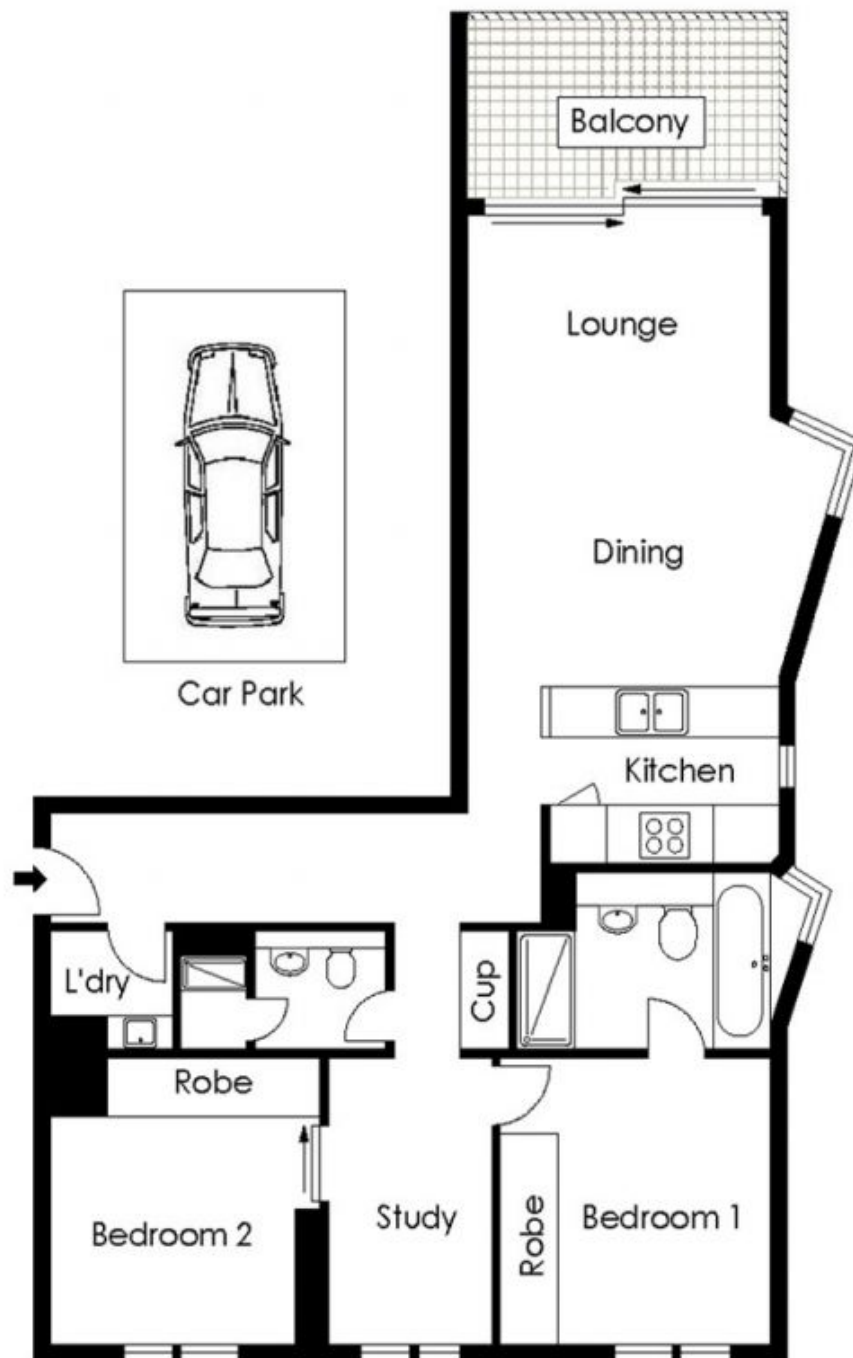
Agent

Morton RE

 [info@morton.com.au](tel:)

morton.com.au

1105/157 Liverpool Street, Sydney



0 1 2 3 4 5
SCALE (METRES)

PLANS SHOWN ONLY INDICATIVE OF LAYOUT. DIMENSIONS ARE APPROXIMATE.



The information above is provided in good faith and has been provide to us from a variety of sources. We have not verified who accurate and do not have any belief one way or other in its accuracy. We do not accept any responsibility to any person for it pass it on. All interested parties should rely on their own inquiries in order to determine whether or not this information is