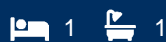




morton.

Sydney 18/17-25 Wentworth Avenue



Presenting a rare combination of cosmopolitan living and peaceful surrounds, this 3rd floor residence enjoys an idyllic outlook over quiet Commonwealth Street below. Positioned just 200m from Hyde Park and steps from Oxford Street's nightlife, vibrant sides of the city converge with Surry Hills' trendy eateries, the CBD, museums and galleries all within walking distance. This apartment is perfect for buyers looking to capitalize on an investment full of possibilities and ready to enjoy a fabulous Sydney lifestyle.

- Generous 60sqm floorplan with well-maintained, bright interiors
- Open plan living, dining and kitchen for easy entertaining
- Full width, covered balcony with tree-lined city views
- Double bedroom with dual built-in robes and a full ensuite
- Internal laundry room and air-conditioning
- Security building with level lift access and intercom entry

View

As advertised or by appointment

Agent

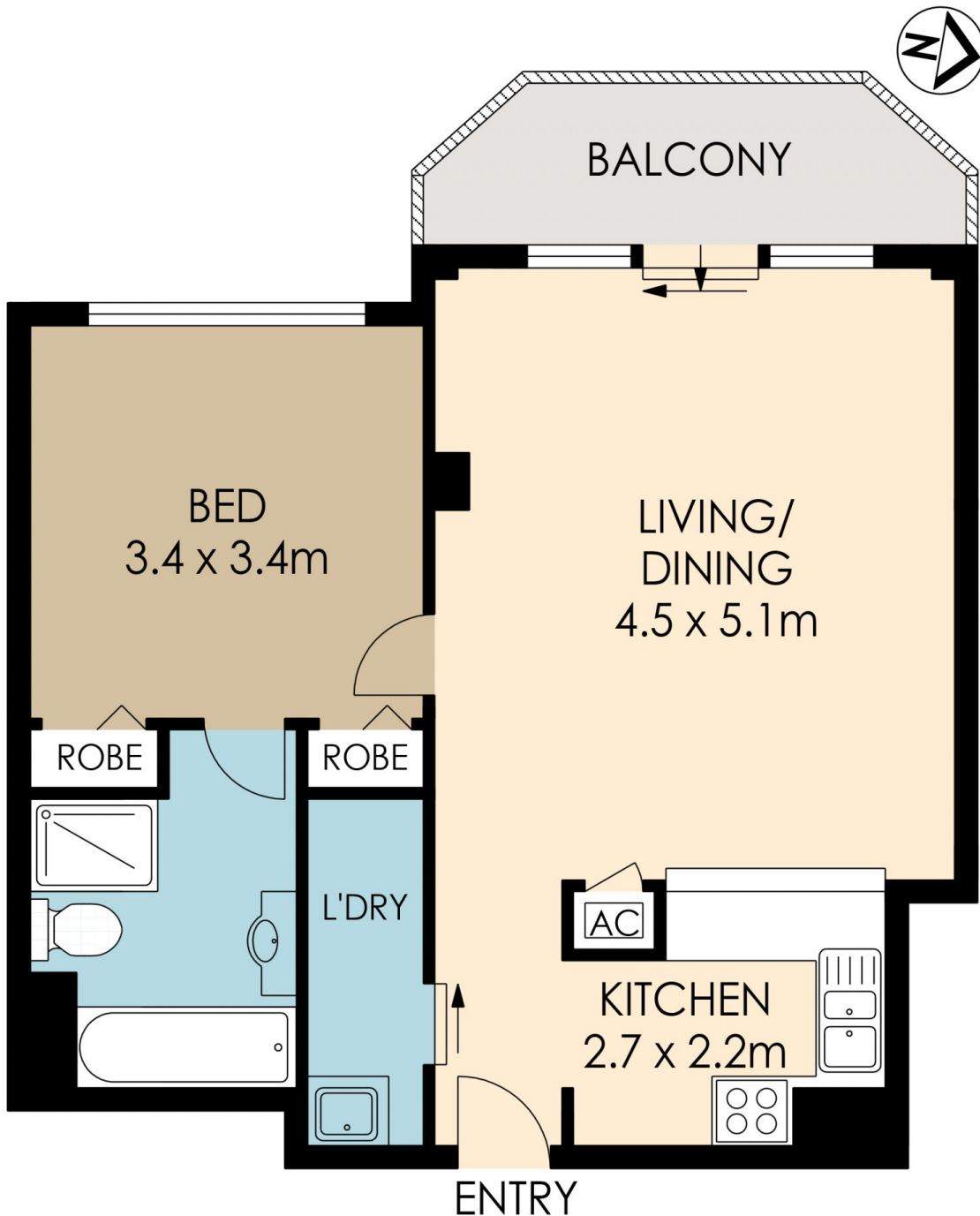
Morton RE



✉ info@morton.com.au

morton.com.au

morton.



18/17-25 Wentworth Avenue, Sydney

The information above is provided in good faith and has been provide to us from a variety of sources. We have not verified whether the information is accurate and do not have any belief one way or other in its accuracy. We do not accept any responsibility to any person for its accuracy and do no more than pass it on. All interested parties should rely on their own inquiries in order to determine whether or not this information is in fact accurate.

Floor Plan by www.squaremeter.com.au