



morton.

Sydney 1201/129 Harrington Street

1 1 1

A work of art from Harry Seidler, 'Cove' is a community of undeniable quality and prestige. Beautifully crafted with an exacting attention to detail and an intuitive understanding of the flow of light and space, it is simply moments to the harbour's edge.

- Stunning views of Observatory Hill, harbour and Bridge
- Opening to capture northern light and summer breezes
- Open living areas flow easily to a protected balcony
- Study alcove, integrated gas kitchen, master has built ins
- Reverse air con, high ceilings, floor-to-ceiling windows
- Gym, pool, sauna, library, 24 hour concierge, 10sqm storeroom
- Award winning foyer, function space with grand piano

View

As advertised or by appointment

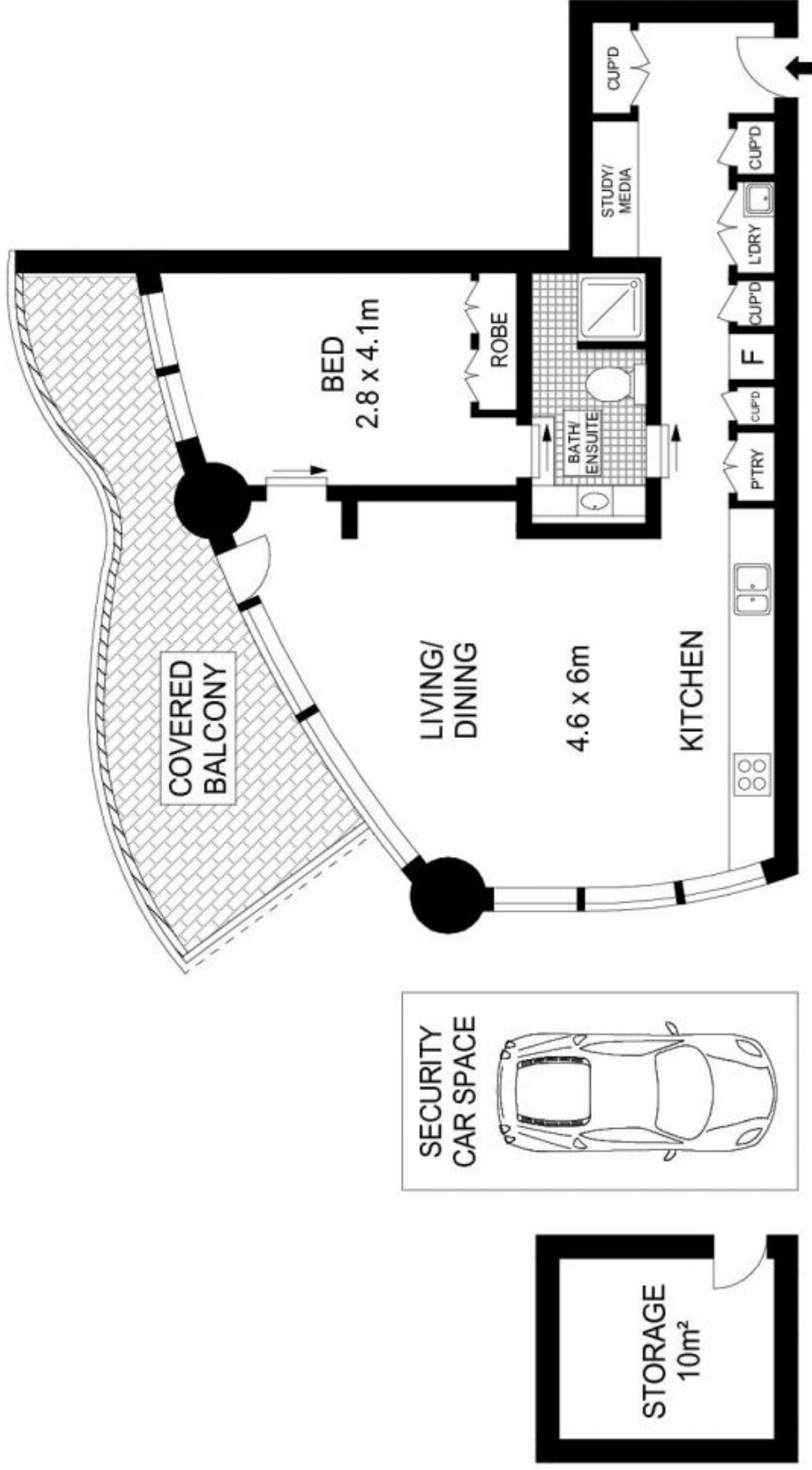
Agent

Ettiene West

0410 593 749

ettiene@morton.com.au

morton.com.au



LEVEL TWELVE

BASEMENT

BASEMENT



Scale in metres. Indicative only. Dimensions are approximate. All information contained herein is gathered from sources we believe to be reliable. However we cannot guarantee its accuracy and interested persons should rely on their own enquiries.



1201/129 Harrington Street, Sydney