



morton.

Surry Hills 1204/20 Pelican Street

🛏 2 🚿 2 🚗 1

A contemporary offering from the renowned Melbourne firm Wood/Marsh Architecture, this stunning apartment is perfectly set in one of the inner city's premier communities. Ideally low maintenance with an intuitive floorplan and views to Hyde Park and the skyline, this is a home of undeniable appeal.

- Open entertaining, distinct lounge/dining spaces
- Inviting master has a walk-in robe and an ensuite
- Deluxe electric kitchen has CaesarStone benches
- Well configured with ideally separate bedroom wings
- European laundry, air conditioning, concierge and balcony
- Floor-to-ceiling windows, filled with sun, storage cage
- Manicured gardens, heated outdoor pool and gym

View

As advertised or by appointment

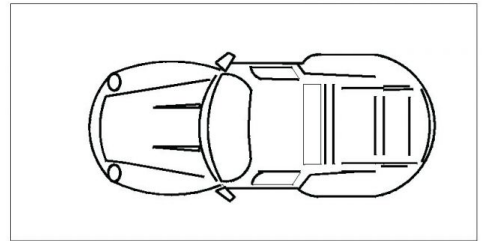
Agent

Ettiene West

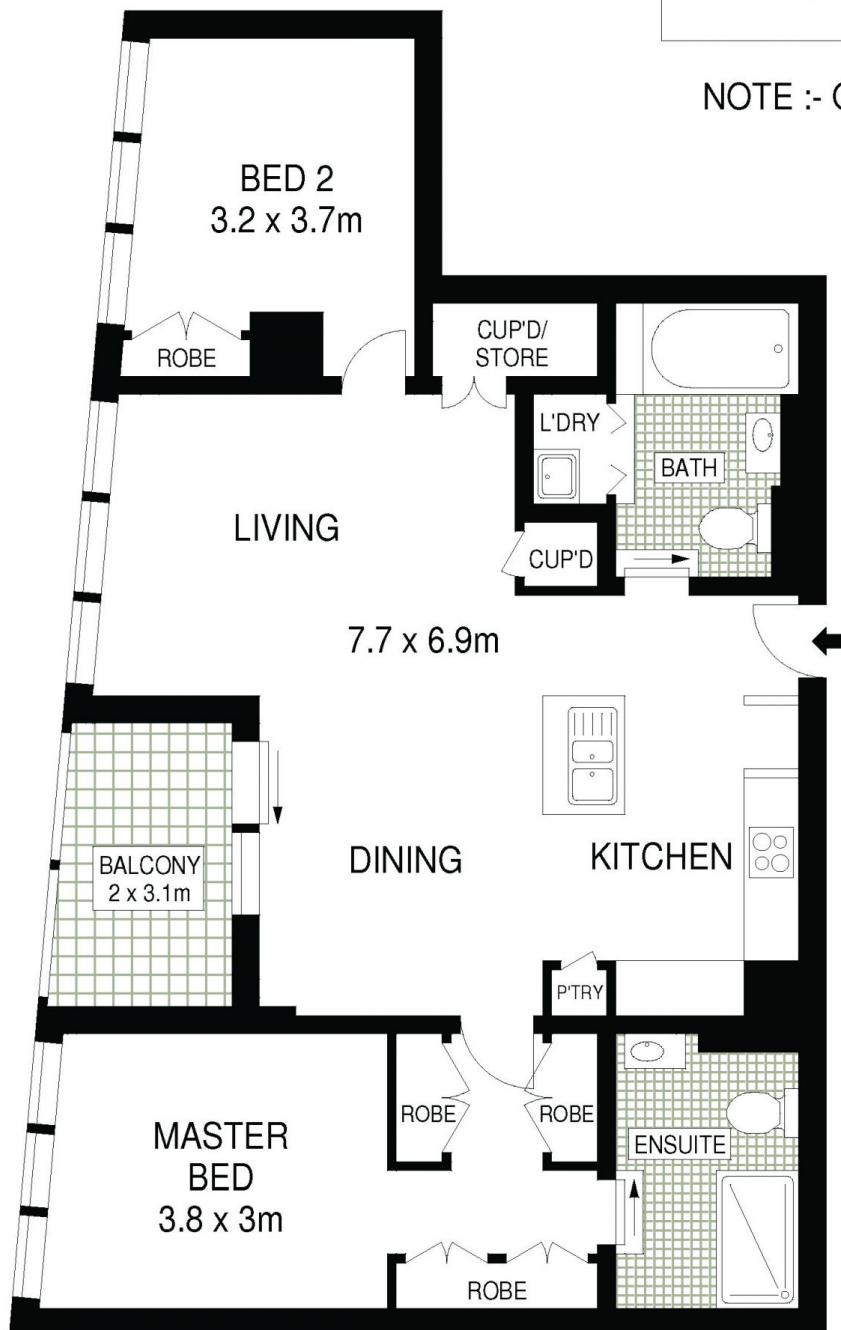
📞 0410 593 749

✉ ettiene@morton.com.au

morton.com.au



NOTE :- ONE SECURITY
CAR SPACE



LEVEL TWELVE

1204/20 PELICAN STREET

Surry Hills



ALL INFORMATION CONTAINED HEREIN IS GATHERED FROM SOURCES WE BELIEVE TO BE RELIABLE. HOWEVER WE CANNOT GUARANTEE ITS ACCURACY AND INTERESTED PERSONS SHOULD RELY ON THEIR OWN ENQUIRIES. DIMENSIONS ARE APPROXIMATE