



# morton.

**WENTWORTH POINT** 3 Amalfi Drive

🛏 3 🚿 2 🚗 2

## View

As advertised or by appointment

## Agent

**Sarah Fowell**

📞 0437 492 129

✉ rentals@morton.com.au

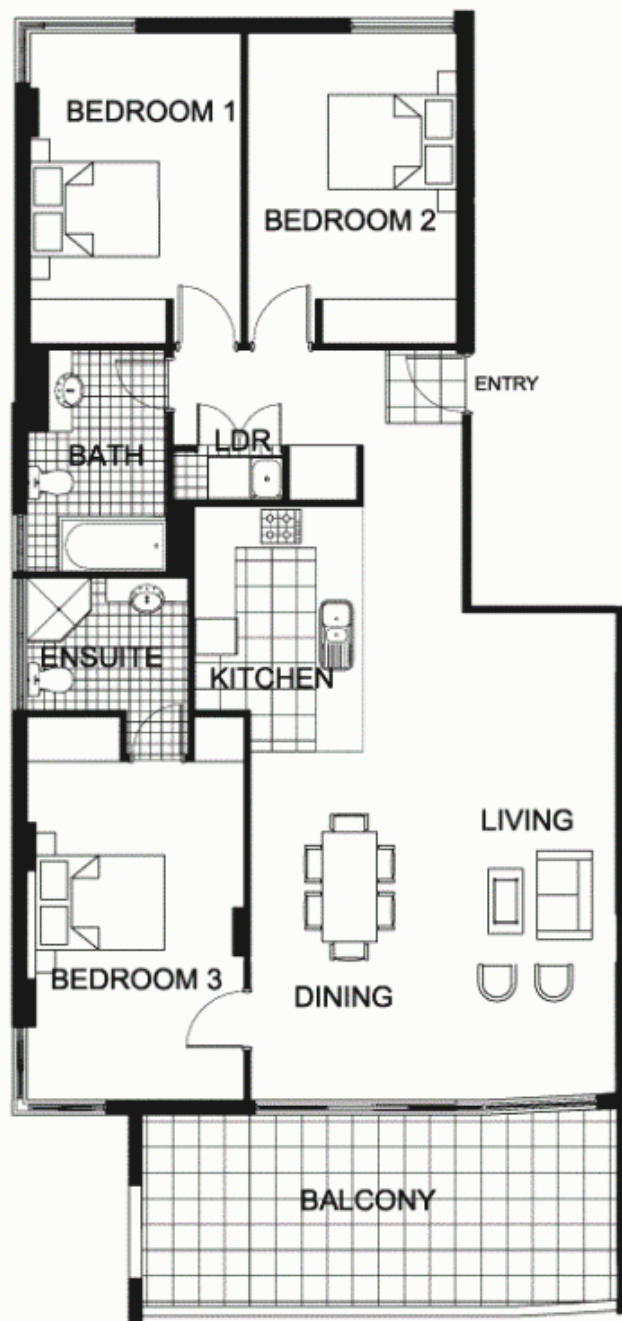
This three bedroom residence is located on the north east corner of the tightly held Monaco building, surrounded by water views and manicured gardens the outlook is simply the best Wentworth Point can offer. The internal aspect of this residence has been retouched to create a comfortable home enhanced by the water views, sea breezes and the lifestyle available at The Waterfront.

With its northerly orientation the apartment is naturally bright and the generous balcony would suit the inhouse entertainer all whilst enjoying the best views in the entire estate.

Accommodation includes three generous sized bedrooms all with built ins, main bedroom with waterviews, sleek gourmet kitchen including gas cook top and Fisher & Paykel appliances, Open plan living and dining, internal laundry, 17sqm balcony, two bathrooms and double parking in a secure basement with audio/visual intercom.

Access to Pulse Club with indoor heated pool, gymnasium,

**morton.com.au**



0 1 2 3 4 5

"The information contained herein is intended as an introduction to the general content of the project and is subject to variation. Interested parties should rely on their own enquiries and the contract for sale. The developer reserves the right to vary from these descriptions as it deems necessary or as any relevant authority may require."



3 BEDROOM

APARTMENT 315 (Original No.301)

TYPE J

INTERNAL AREA 113 sqm

OUTDOOR AREA 17 sqm

TOTAL AREA 130 sqm

LEVEL 3

MONACO