



# morton.

**WENTWORTH POINT** 21 Hill Rd

 1  1  1

As new modern contemporary building, one bedroom studio style apartment on level four with balcony and street outlook.

**Features:**

- \* Open plan kitchen and living area
- \* Retractable doors to bedroom
- \* Neutral colour palate
- \* Stainless steel appliances - microwave, oven & dishwasher
- \* Stone benchtops to kitchen and vanity
- \* Laundry cupboard with dryer
- \* External balcony access
- \* Access to Pulse Lifestyle Club, indoor heated pool, gym, tennis courts.
- \* Cafes and restaurants on site
- \* Surrounded by 425 hectares of urban parkland at Sydney Olympic Park extending to Homebush Bay and the Parramatta River.

**View**

As advertised or by appointment

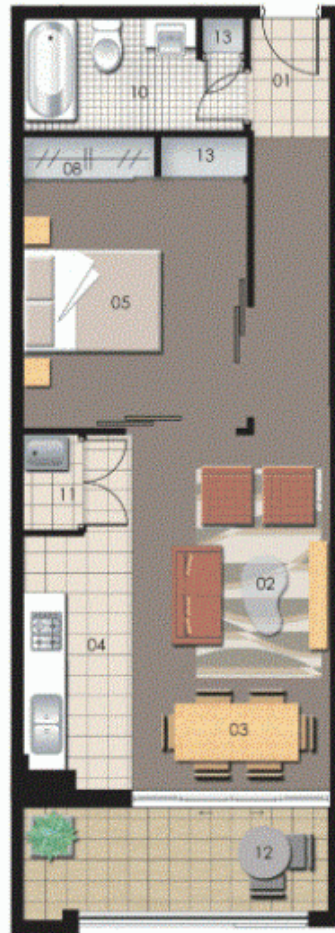
**Agent**

**Sarah Fowell**

 0437 492 129

 rentals@morton.com.au

[morton.com.au](http://morton.com.au)



ENTRY	01	WARDROBE	08
LIVING	02	ENSUITE	09
DINING	03	BATHROOM	10
KITCHEN	04	LAUNDRY	11
BEDROOM 1	05	BALCONY	12
BEDROOM 2	06	STORAGE	13
BEDROOM 3	07		



## Unit 414

Lot Number	17
Type	1 Bedroom
Unit Area	51 sqm
Balcony	7 sqm
Total	58 sqm