



# morton.

**Cremorne** 55 Earle Street

 3  2  1

Showcasing elegant interiors, this beautifully designed home is perfect for the entertainer with lots of indoor and outdoor areas along with tranquil view over Middle Harbour. This family-friendly location is footsteps from Primrose Park, quality schools and a vibrant lifestyle.

- Modern kitchen with stone bench tops and microwave and dishwasher included
- Spacious living room with gas inbuilt gas fireplace heater to wall
- Well landscaped backyard with retractable awning
- Well-lit dining area with lots of natural light
- Built-in wardrobes in each bedroom
- Guest bathroom off living area with internal laundry space
- Dual access to upstairs bathroom
- Upstairs second living space, with lovely views of the harbour
- Spacious balcony with cover that can be opened or closed
- Spacious storage room
- Carport available for one car

[morton.com.au](http://morton.com.au)

### View

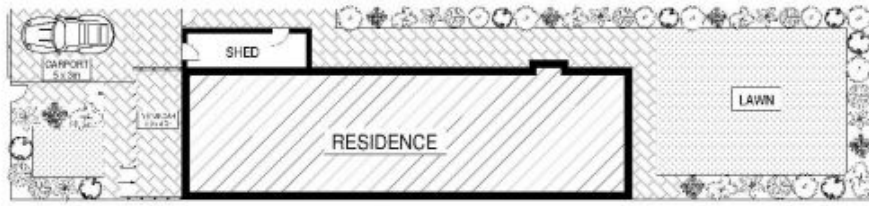
As advertised or by appointment

### Agent

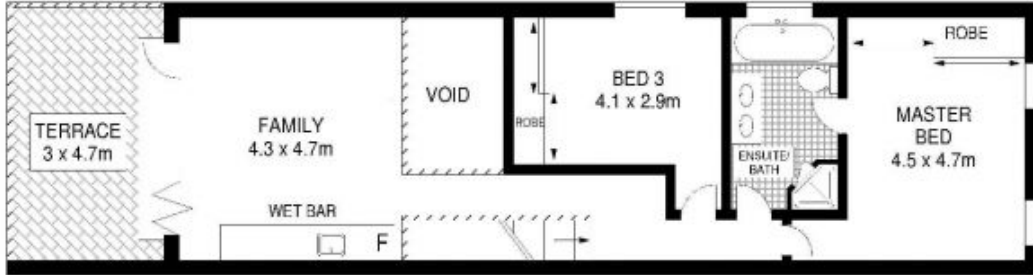
**Sarah Fowell**

 0437 492 129

 [sarah@morton.com.au](mailto:sarah@morton.com.au)



SITE PLAN (NOT TO SCALE)



FIRST FLOOR



GROUND FLOOR

0 1 2 3 4 5  
Scale in metres. Indicative only. Dimensions are approximate.



55 Earle Street, Cremorne