



# morton.

**Neutral Bay** 9/28 Bent Street

2 1 1

Located in a quiet elevated street position, this top floor renovated two bedroom apartment has sensational 180 degree views of North Sydney, the city skyline and the Harbour Bridge. Located within a short walk to city transport, parks, shopping centres and an array of cafes and restaurants, this apartment is one of a kind.

- Freshly painted throughout
- Enormous 90 sqm exterior terrace with exceptional views
- Open plan living area with high ceilings and additional balcony
- Both bedrooms include built-in wardrobes and brand new blinds
- Kitchen with Miele appliances and dual dishdrawers
- Modern bathroom with separate shower recess and bathtub
- Lock-up garage
- Internal laundry with dryer

## View

As advertised or by appointment

## Agent

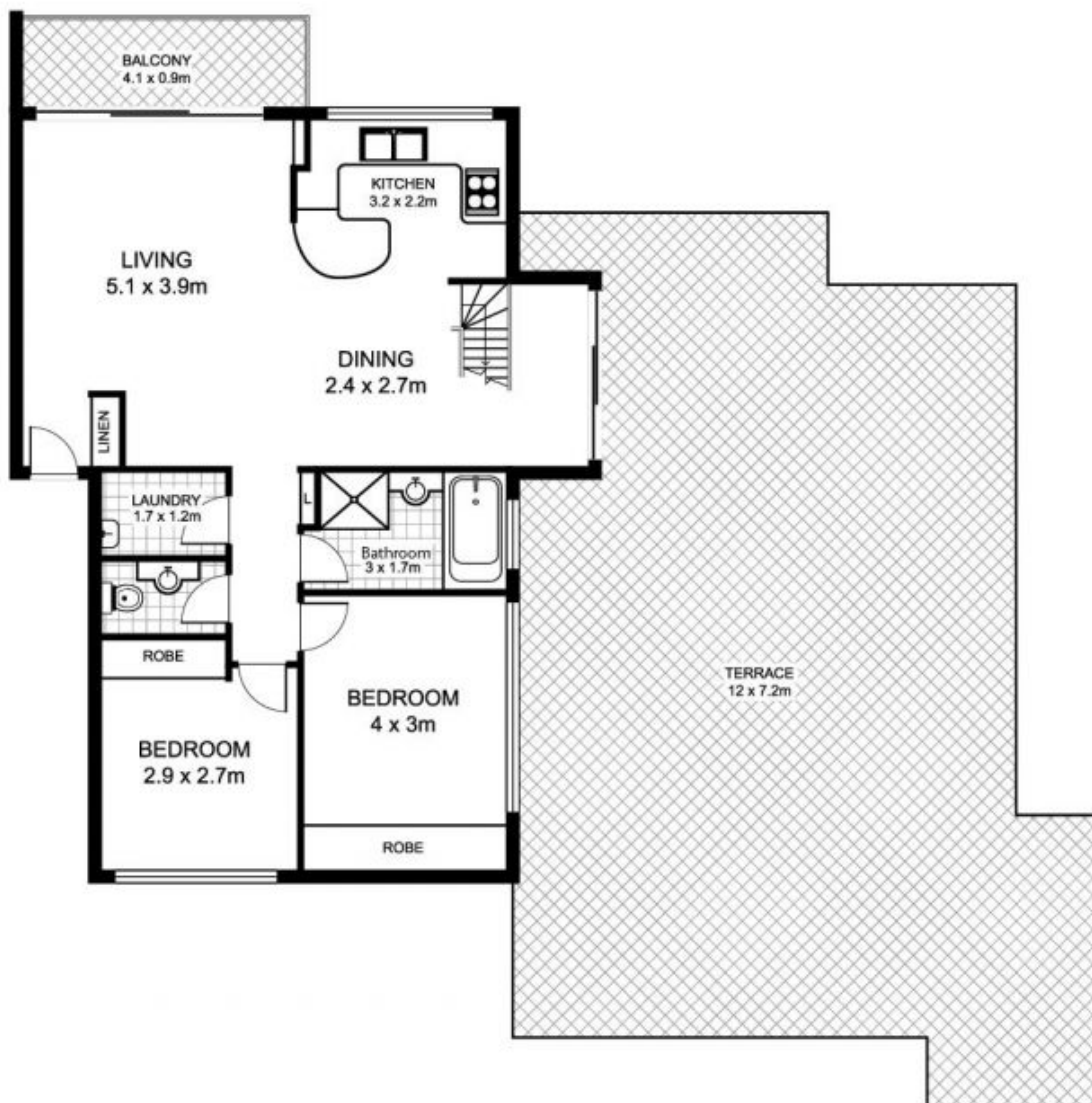
**Sarah Fowell**

0437 492 129

sarah@morton.com.au

**morton.com.au**

## 9/28 Bent Street, NEUTRAL BAY



NORTH



This floor plan is intended as a guide only. Layout dimensions are approximate only. No representations or warranties of any nature whatsoever are given or intended. Any person using this information should rely on their own enquiries