



morton.

MILSONS POINT MILSONS POINT

3 3 2

Nestled in a private and quiet street this brand new apartment will redefine your notion of relaxed but sophisticated city living.

This ultra chic boutique address overlooks Lavender Bay, the Harbour Bridge and city and incorporates leading edge design, superb inclusions & an ambience of space & luxury.

Enormous open plan lounge / dining with high ceilings opens through concertina doors to 45 sq meter balcony running the full width of the apartment with the expansive views as your back drop. State of the art kitchen with European stainless steel appliances, exotic stone bench tops & adjoining breakfast area.

Master bedroom over looks Lavendar Bay with walk through 'his & her' wardrobes to opulent ensuite bathroom with dual basins, heated floors / towel rails, separate bathtub and shower recess. Over sized 2nd and 3rd bedrooms both with built-ins (2nd with ensuite) are completely separate to master retreat.

View

As advertised or by appointment

Agent

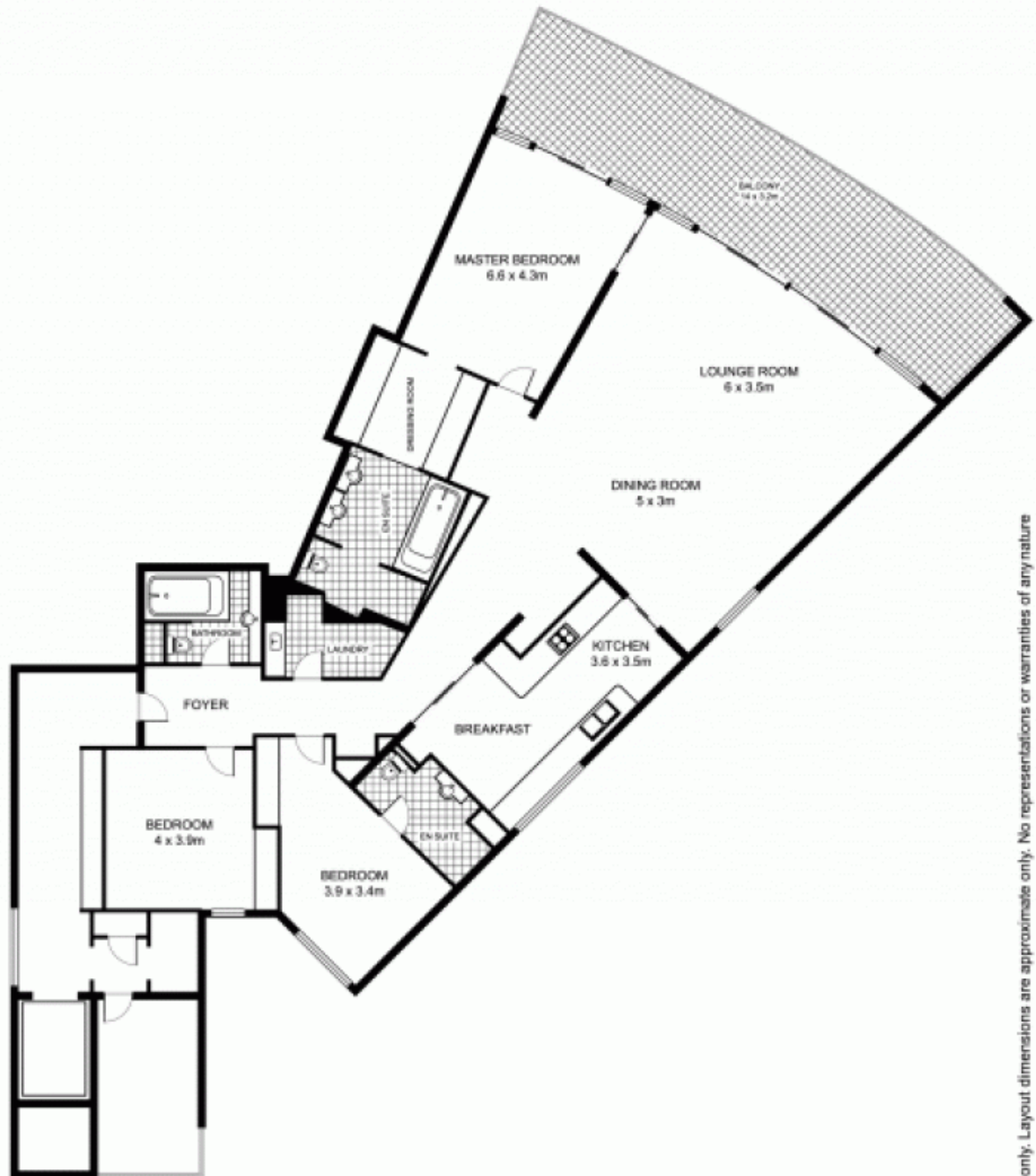
James Crow

0410 593 057

james@morton.com.au

morton.com.au

501/30 Cliff St, MILSONS POINT



Plans by
surroundpix
com.au
1300 30 32 40

This floor plan is intended as a guide only. Layout dimensions are approximate only. No representations or warranties of any nature whatsoever are given or intended. Any person using this information should rely on their own enquiries