



morton.

Pyrmont 51/56 Pirrama Road



Located at the northern end of the award-winning Sydney Wharf, designed by the acclaimed PTW architects, this furnished unique apartment offers easy entertaining and a bespoke city lifestyle.

- Oversized one bedroom with 78sqm internal, 110 sqm in total
- Stunning designer furnishings throughout
- Enjoying sprawling water views from every room
- Light filled open plan living area flows onto the large balcony
- Large master bedroom
- Travertine Bathrooms and superbly finished cabinetry
- Stylish marble kitchen features exquisite island bench
- Miele Gas appliances, ducted air conditioning
- Security parking in basement and Concierge services.
- Facilities including gym, pool and spa.

View

As advertised or by appointment

Agent

Patricia Carter

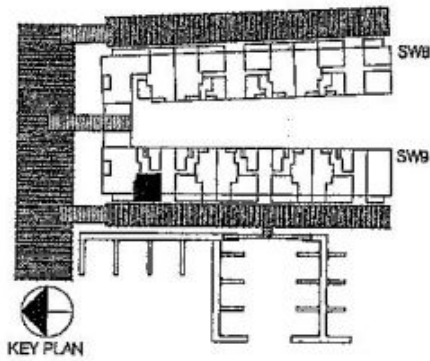
- 📞 0456 880 004
- ✉️ patricia@morton.com.au

morton.com.au

SYDNEY WHARF 9

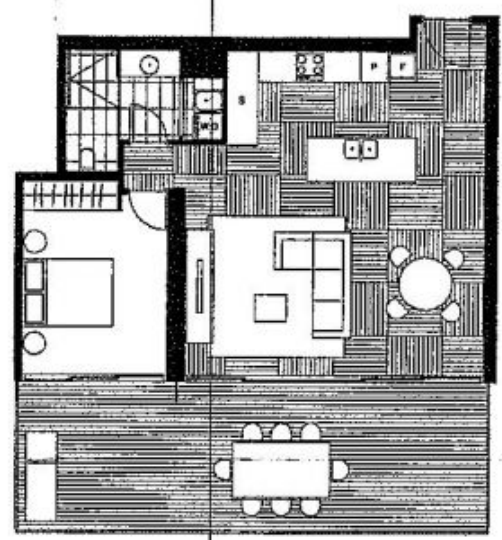
9.1.51

SYDNEY WHARF 9
PYRMONT BAY
1 BEDROOM



| | |
|-----------|------------|
| Living | 3.7 x 4.4m |
| Dining | 2.9 x 4.4m |
| Bedroom 1 | 3.2 x 3.7m |

- Note:
- Floor plans are drawn at an unspecified scale.
 - Room sizes of Bedrooms are taken to the front face of robe.
 - Under bench oven in Kitchen.



LEVEL 1

Disclaimer:
This Layout Plan is a guide only and was prepared prior to completion of the project. This information contained herein is believed to be correct, however is not guaranteed. Dimensions are approximate. Changes will undoubtedly occur during the development, construction, sales, fittings, fixtures and specifications may be subject to change without notice in accordance with the provisions of the Contract for Sale. Balconies necessary for services are not depicted. The fixtures depicted in the Layout Plan is not included in the sale. The position of the furniture should not be taken to indicate the final position of power points, TV connection points and the like. Floor finish is indicative only. Prospective purchasers must rely on their own enquiries.