



**morton.**

**Pymont** 515/97-101 Pymont Bridge Road

2 
 2 
 1

LEASED BY AMBER RIETHMULLER 0438 977 172

Impressive style and unparalleled architectural excellence, PIER 99 embrace's style. Located a stone's throw from Blackwattle Bay is this brand new two bedroom split level security apartment. Features include:

- Superb gas kitchen, stone benchtops, Miele appliances
- Floor to ceiling sliders, generously alfresco balcony area
- Light filled and spacious master bedroom with ensuite
- Sleek designer bathrooms featuring frame-less shower screens
- Security car space, lift access, security building internal laundry
- Moments to Darling Harbour restaurants, Sydney Fish Markets
- Metres to Wentworth Park light rail station and The Star Casino

**View**

As advertised or by appointment

**Agent**

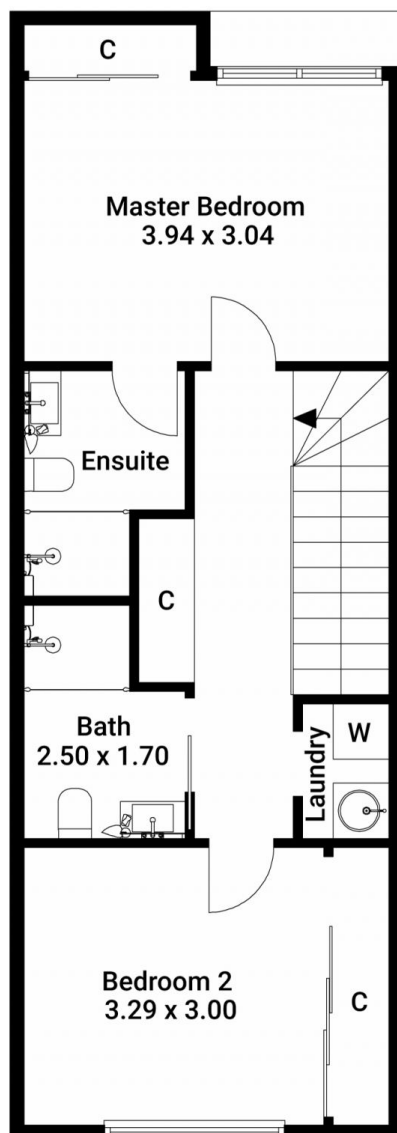
**Morton RE**

rentals@morton.com.au

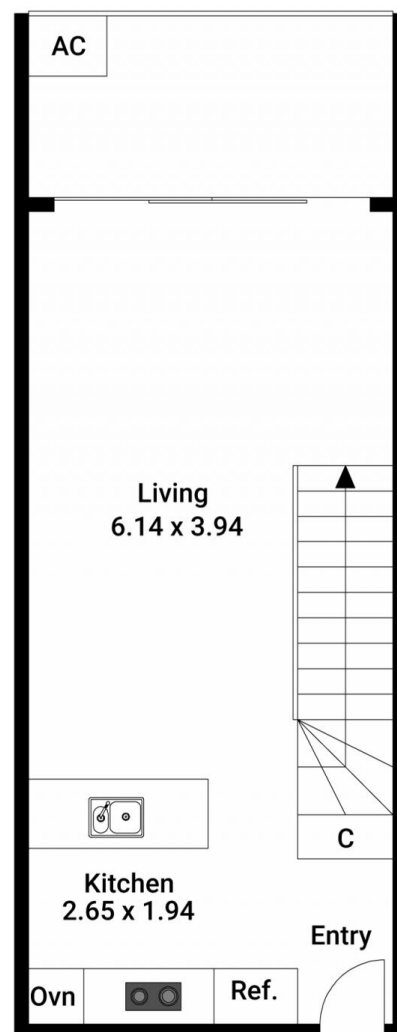
**morton.com.au**



(Not In Position)



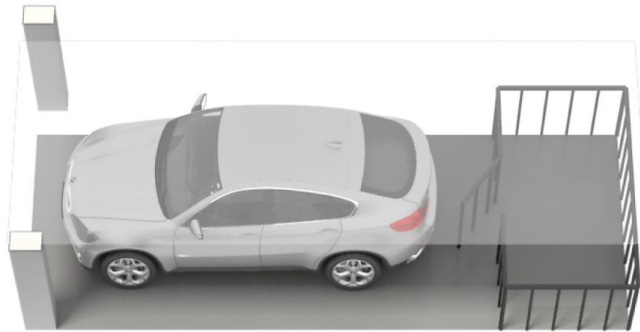
First Floor



Ground Floor

The floor plan is not to scale. Measurements are indicative and in metres.

Produced by **DIAKRIT**



First Floor



Ground Floor

The interior style and design of this floor plan is designed for inspiration purposes to show the living spaces. It is not an exact replica of the furniture and fittings in the home.

Produced by **DIAKRIT**