



morton.

Pyrmont 212/1 Wattle Crescent

 2  2  1

LEASED BY AMBER RIETHMULLER 0438 977 172

Occupying a premier position in 'Pier 99', Pyrmont's most anticipated new building, this exceptional residence defines affordable luxury living without compromise. Finished to the most exacting of standards it is literally moments to the sparkling waters of Blackwattle Bay. Features include:

- Generous open plan living which flows onto enclosed balcony
- Split level with bedrooms located on the top level
- Two carpeted double bedrooms with built-in robes, master has ensuite
- Sleek kitchen with stone benches, Miele gas appliances including dishwasher
- Timber floors, high ceilings, study alcove, and ducted air
- Secure parking, internal laundry with tumble dryer and a storage cage

View

As advertised or by appointment

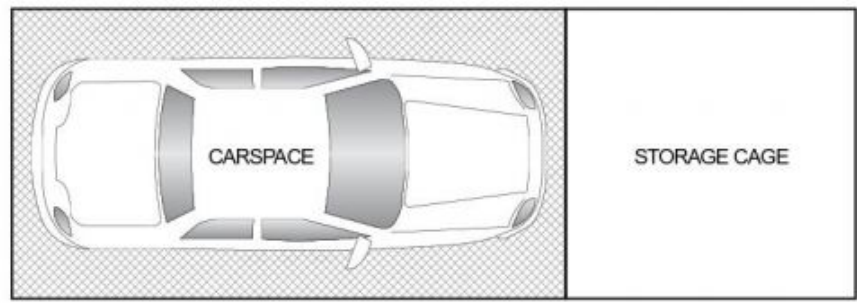
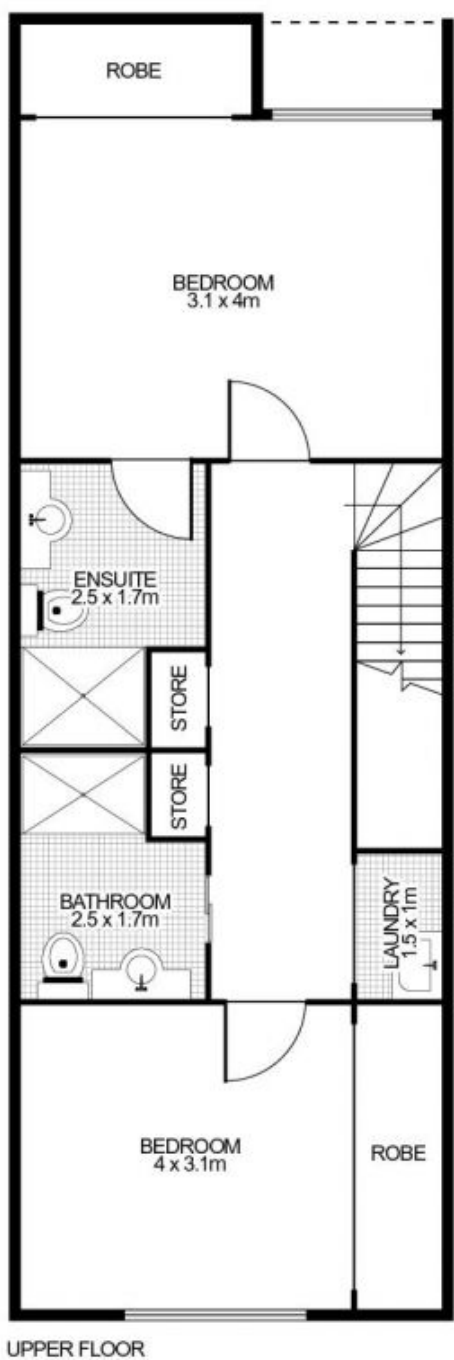
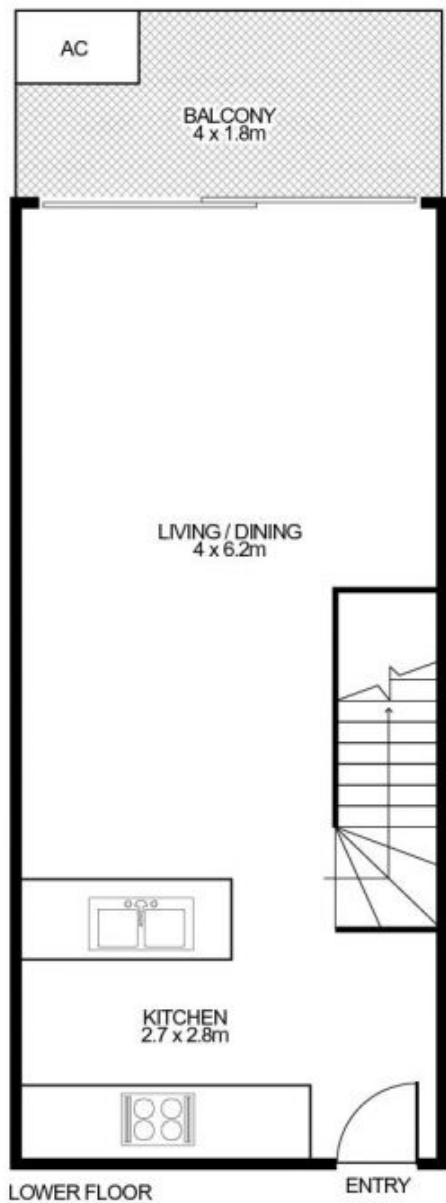
Agent

Morton RE



 rentals@morton.com.au

morton.com.au



212/1 Wattle Crescent, PYRMONT



This floor plan is intended as a guide only. Layout dimensions are approximate only. No representations or warranties of any nature whatsoever are given or intended. Any person using this information should rely on their own enquiries. Floor Plans by SURROUNDPIX.