



morton.

Woolloomooloo 561/6 Cowper Wharf Roadway

🏠 1 📄 2

This lovely furnished one bedroom apartment provides the perfect layout for those looking for a unique lifestyle. With a master bedroom plus ensuite on the mezzanine level and a guest bathroom downstairs this is one not to miss out on.

- East facing views of Potts Point and Garden Island
- Modern granite kitchen with Blanco appliances
- Open-plan living room
- Modern bathroom and powder room
- Natural light from ceiling skylights
- Reverse cycle air conditioning
- Internal laundry with dryer
- Good sized loft - 70 sqm

View

As advertised or by appointment

Agent

Morton RE



rentals@morton.com.au

morton.com.au

561/6 Cowper Wharf roadway
Woolloomooloo NSW

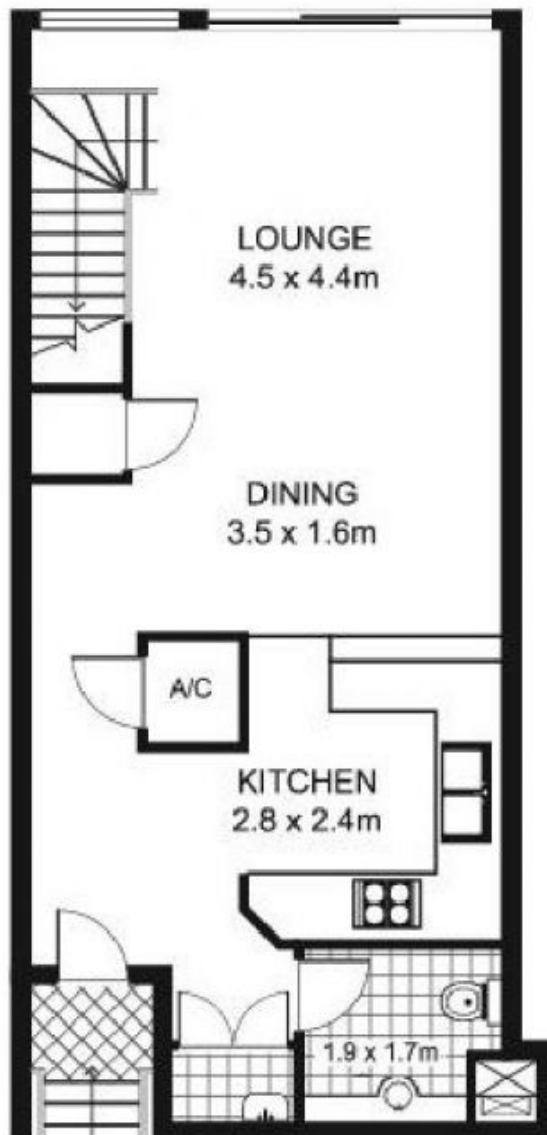


SCALE 1m

* note
all measurements are approximate only.
Plan is provided only as an indication of layout.



LOFT LEVEL



FIRST LEVEL