



# morton.

**Woolloomooloo** 549/6 Cowper Wharf Roadway

1 1

Top level fully furnished loft style apartment in the Woolloomooloo Finger Wharf, one of the most unique developments in Sydney. A beautiful Eastern aspect of the morning sun with views towards Potts Point and Garden Island.

- Kitchen with stone bench and gas cooktop
- Loft bedroom with ensuite
- Light filled living area with delightful water views
- Internal laundry
- Reverse cycle air conditioning
- 24 hour on-site security

## View

As advertised or by appointment

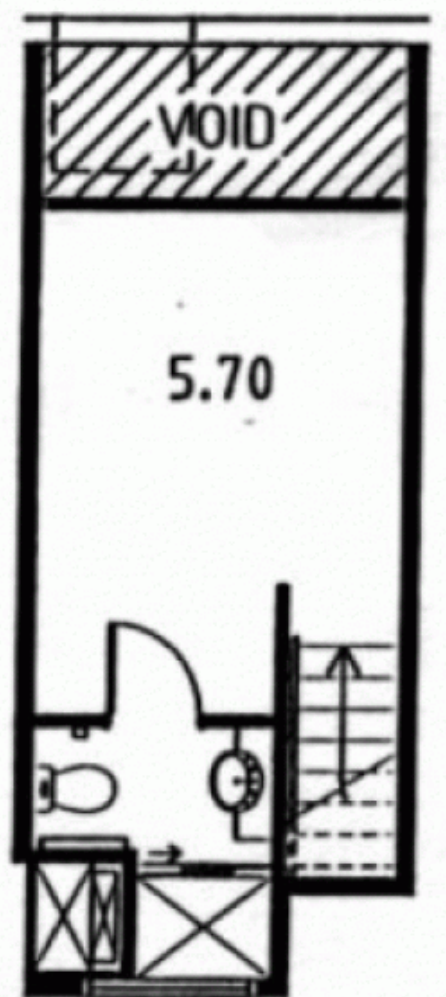
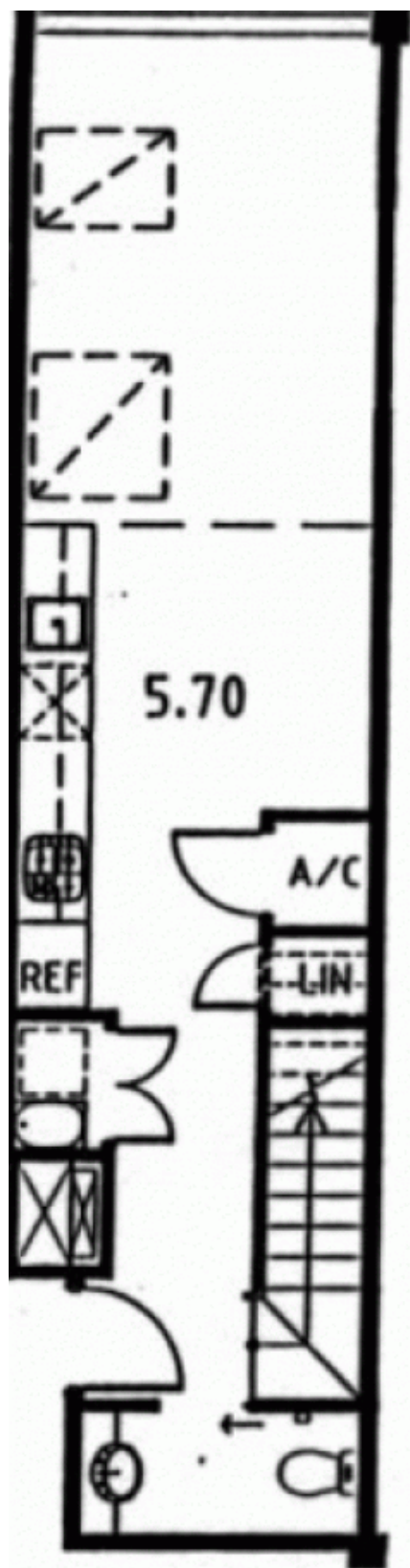
## Agent

**Morton RE**



rentals@morton.com.au

**morton.com.au**



LOFT  
LEVEL