



morton.

Woolloomooloo 436/6 Cowper Wharf Roadway

3 2 1

A blue-ribbon opportunity well suited to the executive, downsizer or investor seeking a designer lifestyle in an iconic harbour community, this exceptional residence defines contemporary living and has undergone a top-end refurbishment. Embracing views across the water to Potts Point, this is a home of unquestionable pedigree.

- Oversized 139sqm on title; 3rd bedroom/study
- Awash with morning light and soothed by sea breezes
- Open entertaining, distinct lounge and dining areas
- Spacious master boasts a walk-in robe and an ensuite
- Gourmet kitchen, stone benches and gas appliances
- Spacious deluxe bathrooms, separate laundry
- Ducted air conditioning, video security, sunny balcony

View

As advertised or by appointment

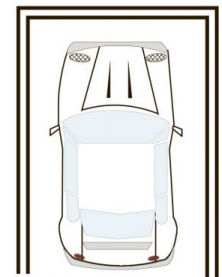
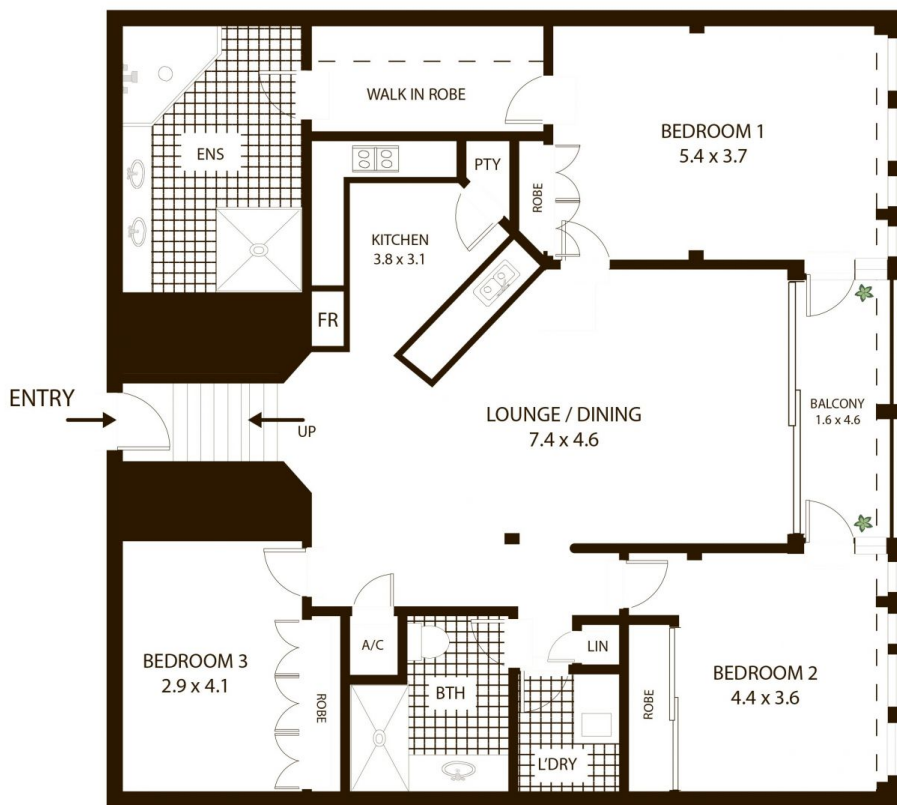
Agent

Morton



info@morton.com.au

morton.com.au



SECURE
CAR SPACE

436/6 Cowper Wharf Rd, Woolloomooloo

All measurements are approximate only. Plan is provided as an indication of layout

