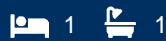




morton.

Chippendale 2110/3 Carlton Street



In an iconic award-winning building of international renown and unrivalled prestige, this exceptional apartment defines cutting edge city living. Located on the corner of Carlton Street and Parramata Road this apartment is a moments walk to universities and Central station.

- Flawlessly appointed with an exacting attention to detail
- Just a short walk to TAFE, UTS and the University of Sydney
- Deluxe integrated CaesarStone kitchens, chic bathrooms
- 24 hour concierge, pool, huge gymnasium, sauna and spa
- Ducted air conditioning, tiled floors and European laundry
- Generous balcony, video intercom, floor to ceiling windows
- Environmentally sustainable with solar power and green walls

View

As advertised or by appointment

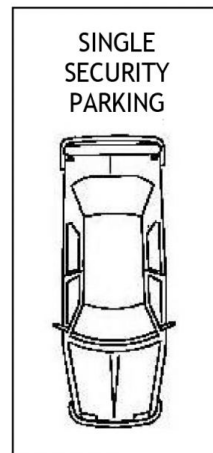
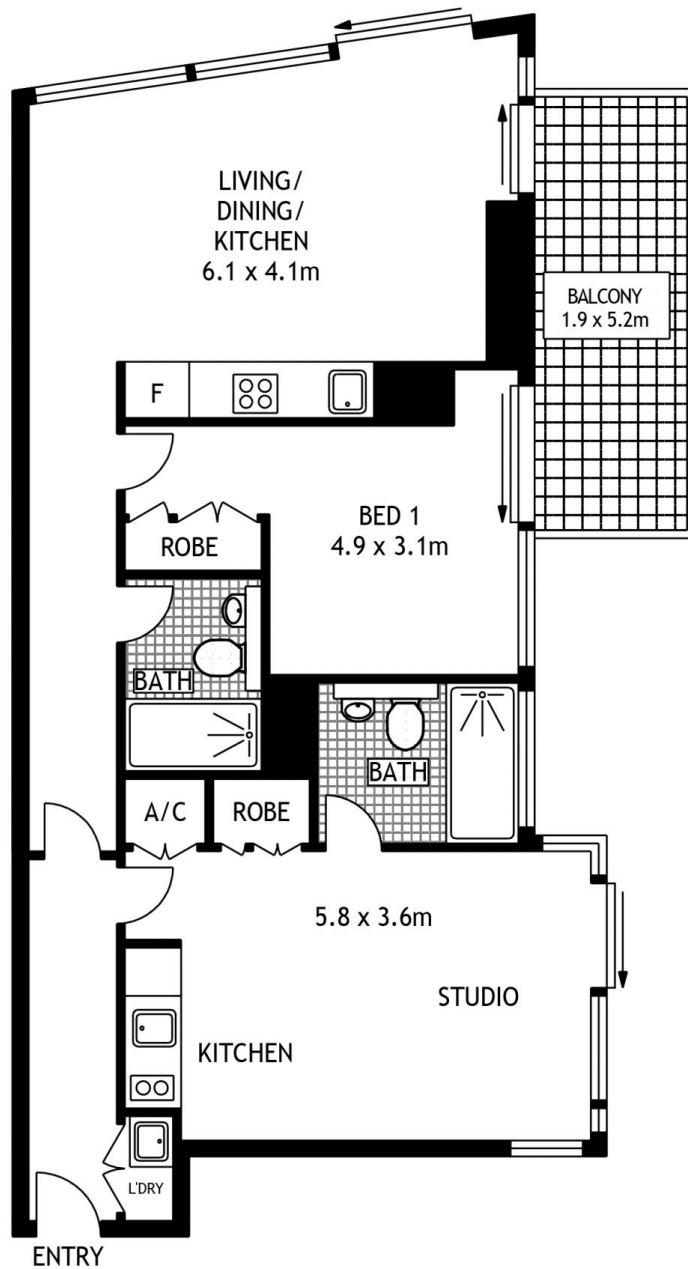
Agent

Patricia Carter

📞 0456 880 004

✉️ patricia@morton.com.au

morton.com.au



TWENTY FIRST FLOOR



2110/3 CARLTON STREET

CHIPPENDALE

SCAPE Floor Planing Disclaimer: This floor plan is conceptual only. it is provided for illustrative purposes only and should not be relied upon. We make no guarantees to the correctness of this plan. All interested parties should make and rely on their own enquiries in determining the accuracy of the information contained in this floor plan.