



morton.

Zetland 501/2 Victoria Park Parade

2 2 1

Wonderfully positioned in the bustling new precinct in Victoria Park, the recently completed 'Stella' apartments is providing a new level of living. 'Stella' is superbly designed by Tzannes Associates to maximise light, open spaces and cross-flow ventilation.

- Floating timber floors throughout
- Kitchens include CaesarStone bench tops and Miele appliances
- Polyurethane finish joinery with ample storage
- Bathrooms with Italian fittings, and
- Feature wall tiles and mirrored storage cabinets
- Includes caged storage and video intercom

View

As advertised or by appointment

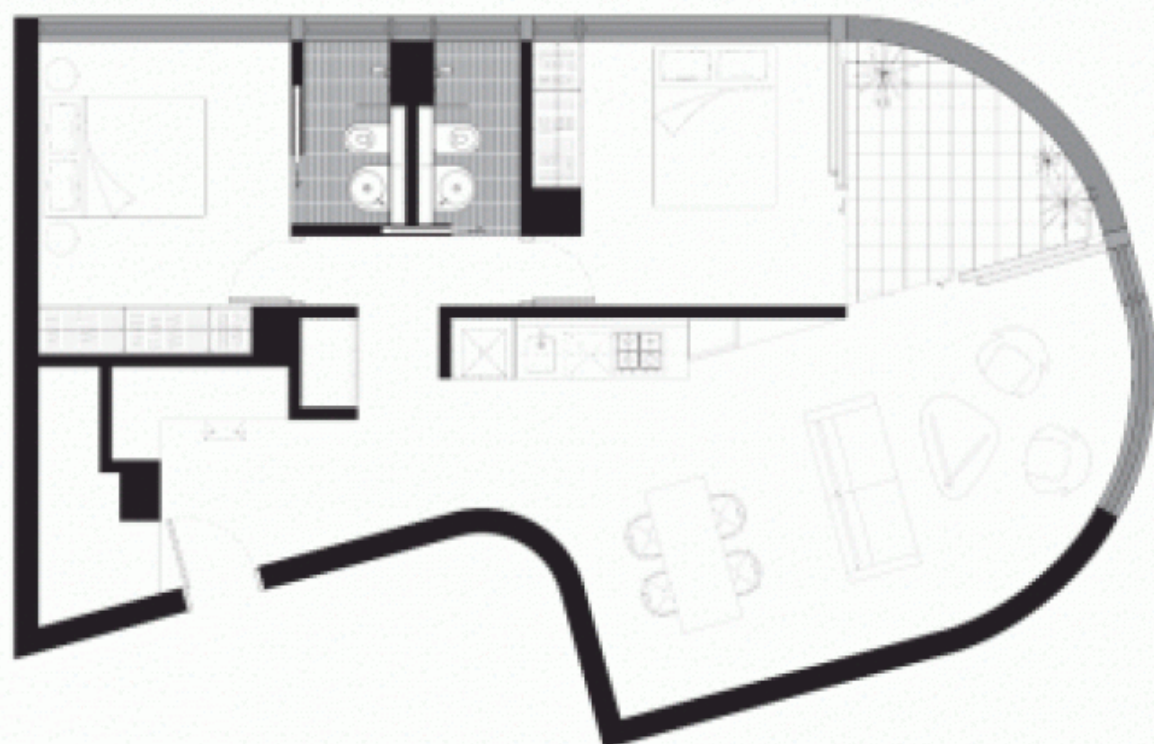
Agent

Morton RE

rentals@morton.com.au

morton.com.au

STELLA



#501
2 BED - LEVEL 5
86 m²



79 sqm internal + 7 sqm balcony