



morton.

Riverwood 121/5 Vermont Crescent

2
 2
 1

Deposit taken & more wanted!

Located in "Lakeview", the latest stage of Washington Park, the fantastic apartments offer a brand new lifestyle in a beautiful, quiet and master planned community. With easy access to the M5 and only 20kms to the CBD. Set for completion in early 2018, we have selection of one-bedroom units which represent the upper echelon of apartment living.

APARTMENT FEATURES

- Reverse cycle air conditioning
- Stainless steel kitchen appliances
- Stone bench tops, mirror splash backs
- Wool carpets, efficient LED down lights
- Data/TV points in living and main bedroom
- Recessed mirrored cabinets in bathroom
- Separate study area & internal laundry
- Large open plan living/dining, opens onto balcony
- Double bedroom including built-in wardrobe
- Secure car space in building, lift with intercom

morton.com.au

View

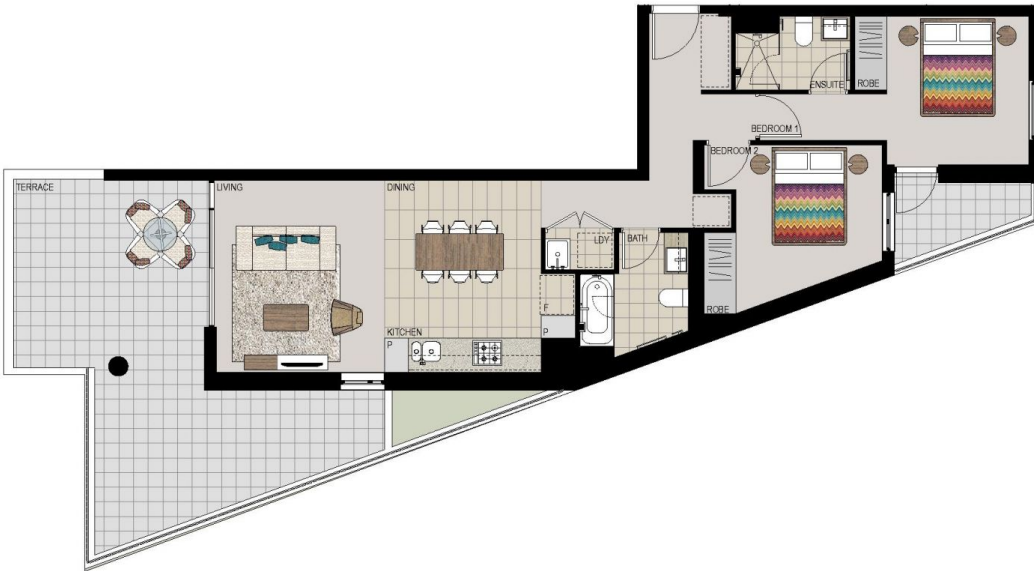
As advertised or by appointment

Agent

Patricia Carter

0456 880 004

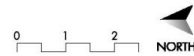
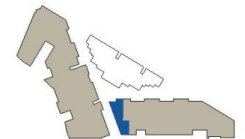
patricia@morton.com.au



APARTMENT 121 LOT 106 2BED

Internal	70m ²
External	34m ²
Total	104m ²

LAKEVIEW



1300 111 088
www.washingtonpark.com.au

Proudly developed by
PAYCE

Disclaimer: This floor plan has been prepared for marketing purposes only. All descriptions, dimensions, depictions and other details in this floor plan may not be to scale and may vary from the property as built. Your attention is drawn to the special conditions of the contract for sale of land. No third party has any authority to make or give any representation or warranty in relation to the property unless the representation or warranty is confirmed by Payce Communities No. 3 Pty Limited and included in the contract for sale of land.
[Rev D_13.12.13]

**We are
Washington Park.**